

The logo consists of a blue speech bubble shape with a white outline. Inside the bubble, the text "enjoy.now" is written in a white, lowercase, sans-serif font. The word "enjoy" is in a slightly larger font size than ".now".

enjoy.now

For more information on how to use the phone, please go to www.alcatelmobile.com and download the complete user manual. Moreover, on the website, you can also find answers to frequently asked questions, upgrade the software via Mobile Upgrade, and so much more.

alcatel 3c

I.I Table of Contents

1.1	Safety and use	4
1.2	Radio waves	7
1.3	Licences.....	10
1.4	Protection against theft	11
1.5	Disclaimer	12
1	Your mobile	13
1.1	Keys and connectors.....	13
1.2	Getting started	16
1.3	Home screen.....	17
2	Text input	24
2.1	Using the Onscreen Keyboard.....	24
2.2	Text editing.....	25
3	Call, Call log and Contacts.....	26
3.1	Call	26
3.2	Call log.....	31
3.3	Contacts.....	31
4	Messaging and Gmail	36
4.1	Messaging.....	36
4.2	Gmail.....	40
5	Calendar & Clock & Calculator	45
5.1	Calendar.....	45
5.2	Clock.....	46
5.3	Calculator.....	49
6	Getting connected	50
6.1	Connecting to the Internet.....	50
6.2	Chrome.....	52
6.3	Connecting to Bluetooth devices	56
6.4	Connecting to a computer.....	57
6.5	Sharing your phone's mobile data connection.....	57
6.6	Connecting to virtual private networks	58

7	Multimedia applications.....	60
7.1	Camera/Camcorder.....	60
7.2	Photos	62
8	Others.....	65
8.1	Files.....	65
8.2	Other applications.....	65
9	Google applications	66
9.1	Gmail.....	66
9.2	Maps.....	66
9.3	YouTube.....	66
9.4	Play Store.....	67
9.5	Drive	67
9.6	Play Music	67
9.7	Photos	67
9.8	Keep.....	67
10	Settings.....	68
10.1	Wireless & networks.....	68
10.2	Device.....	70
10.3	Personal	73
10.4	System.....	78
11	Upgrade	82
12	Accessories.....	83
13	Warranty	84
14	Troubleshooting.....	86
15	Specifications	91



SAR

www.sar-tick.com

alcatel

This product meets applicable national SAR limits of 1.6 W/kg. The specific maximum SAR values can be found on Radio waves section.

When carrying the product or using it while worn on your body, either use an approved accessory such as a holster or otherwise maintain a distance of 5 mm from the body to ensure compliance with RF exposure requirements. Note that the product may be transmitting even if you are not making a phone call..



PROTECT YOUR HEARING

To prevent possible hearing damage, do not listen at high volume levels for long periods. Exercise caution when holding your phone near your ear while the loudspeaker is in use .

1.1 Safety and use

We recommend that you read this chapter carefully before using your phone. The manufacturer disclaims any liability for damage, which may result as a consequence of improper use or use contrary to the instructions contained herein.

• TRAFFIC SAFETY:

Given that studies show that using a phone while driving a vehicle constitutes a real risk, even when the hands-free kit is used (car kit, headset...), drivers are requested to refrain from using their phone when the vehicle is not parked.

When driving, do not use your phone and headset to listen to music or to the radio. Using a headset can be dangerous and forbidden in some areas.

When switched on, your phone emits electromagnetic waves that can interfere with the vehicle's electronic systems such as ABS anti-lock brakes or airbags. To ensure that there is no problem:

- Do not place your phone on top of the dashboard or within an airbag deployment area;
- Check with your car dealer or the car manufacturer to make sure that the dashboard is adequately shielded from phone RF energy.

• CONDITIONS OF USE:

You are advised to switch off the phone from time to time to optimise its performance. Switch the phone off before boarding an aircraft.

Switch the phone off when you are in health care facilities, except in designated areas. As with many other types of equipment now in regular use, phones can interfere with other electrical or electronic devices, or equipment using radio frequency.

Switch the phone off when you are near gas or flammable liquids. Strictly obey all signs and instructions posted in a fuel depot, petrol station, or chemical plant, or in any potentially explosive atmosphere.

When the phone is switched on, it should be kept at least 15 cm from any medical device such as a pacemaker, a hearing aid, or an insulin pump, etc.. In particular when using the phone, you should hold it against the ear on the opposite side to the device, if any.

To avoid hearing impairment, pick up the call before holding your phone to your ear. Also move the phone away from your ear while using the "hands-free" mode because the amplified volume might cause hearing damage.

Do not let children use the phone and/or play with the phone and accessories without supervision.

If your phone has a removable cover, note that your phone may contain substances that could create an allergic reaction.

If your phone is a unibody device, the back cover and battery are not removable. If you disassemble your phone the warranty will not apply. Disassembling the phone may damage the battery, and may cause leakage of substances that could create an allergic reaction.

Always handle your phone with care and keep it in a clean and dust-free place.

Do not allow your phone to be exposed to adverse weather or environmental conditions (moisture, humidity, rain, infiltration of liquids, dust, sea air, etc.). The manufacturer's recommended operating temperature range is -10°C (14°F) to +45°C (113°F).

At over 45°C (113°F) the legibility of the phone's display may be impaired, though this is temporary and not serious.

Do not open, dismantle, or attempt to repair your phone yourself.

Do not drop, throw, or bend your phone.

Do not use the phone if the glass screen is damaged, cracked, or broken to avoid any injury.

Do not paint it.

Use only batteries, battery chargers, and accessories which are recommended by TCL Communication Ltd. and its affiliates and are compatible with your phone model. TCL Communication Ltd. and its affiliates disclaim any liability for damage caused by the use of other chargers or batteries.

Remember to make backup copies or keep a written record of all important information stored on your phone.

Some people may suffer epileptic seizures or blackouts when exposed to flashing lights, or when playing video games. These seizures or blackouts may occur even if a person never had a previous seizure or blackout. If you have experienced seizures or blackouts, or if you have a family history of such occurrences, please consult your doctor before playing video games on your phone or enabling a flashing-lights feature on your phone.

Parents should monitor their children's use of video games or other features that incorporate flashing lights on the phones. All persons should discontinue use and consult a doctor if any of the following symptoms occur: convulsion, eye or muscle twitching, loss of awareness, involuntary movements, or disorientation. To limit the likelihood of such symptoms, please take the following safety precautions:

- Do not play or use a flashing-lights feature if you are tired or need sleep;
- Take a minimum of a 15-minute break hourly;
- Play in a room in which all lights are on;
- Play at the farthest distance possible from the screen;
- If your hands, wrists, or arms become tired or sore while playing, stop and rest for several hours before playing again;
- If you continue to have sore hands, wrists, or arms during or after playing, stop the game and see a doctor.

When you play games on your phone, you may experience occasional discomfort in your hands, arms, shoulders, neck, or other parts of your body. Follow the instructions to avoid problems such as tendinitis, carpal tunnel syndrome, or other musculoskeletal disorders.

• **PRIVACY:**

Please note that you must respect the laws and regulations in force in your jurisdiction or other jurisdiction(s) where you will use your phone regarding taking photographs and recording sounds with your phone. Pursuant to such laws and regulations, it may be strictly forbidden to take photographs and/or to record the voices of other people or any of their personal attributes, and reproduce or distribute them, as this may be considered to be an invasion of privacy. It is the user's sole responsibility to ensure that prior authorisation has been obtained, if necessary, in order to record private or confidential conversations or take a photograph of another person; the manufacturer, the seller or vendor of your phone (including the operator) disclaim any liability which may result from improper use of the phone.

• **BATTERY:**

Following air regulation, the battery of your product is not charged. Please charge it first.

For a non-unibody device:

Observe the following precautions:

- Do not attempt to open the battery (due to the risk of toxic fumes and burns);
- Do not puncture, disassemble, or cause a short circuit in a battery;
- Do not burn or dispose of a used battery in household rubbish or store it at temperatures above 60°C (140°F).

Batteries must be disposed of in accordance with locally applicable environmental regulations. Only use the battery for the purpose for which it was designed. Never use damaged batteries or those not recommended by TCL Communication Ltd. and/or its affiliates.

For a non-unibody device with a non-removable battery:

Observe the following precautions:

- Do not attempt to eject, replace or open the battery;
- Do not puncture, disassemble, or cause a short circuit in the battery;
- Do not burn or dispose of your phone in household rubbish or store it at temperature above 60°C (140°F).

Phone and battery must be disposed of in accordance with locally applicable environmental regulations.

For a unibody device:

Observe the following precautions:

- Do not attempt to open the back cover;
- Do not attempt to eject, replace, or open battery;
- Do not puncture the back cover of your phone;
- Do not burn or dispose of your phone in household rubbish or store it at temperature above 60°C (140°F).

Phone and battery as a unibody device must be disposed of in accordance with locally applicable environmental regulations.



This symbol on your phone, the battery, and the accessories means that these products must be taken to collection points at the end of their life:

- Municipal waste disposal centres with specific bins for these items of equipment;
- Collection bins at points of sale.

They will then be recycled, preventing substances being disposed of in the environment, so that their components can be reused.

In European Union countries:

These collection points are accessible free of charge.

All products with this sign must be brought to these collection points.

In non-European Union jurisdictions:

Items of equipment with this symbol are not to be thrown into ordinary bins if your jurisdiction or your region has suitable recycling and collection facilities; instead they are to be taken to collection points for them to be recycled.

CAUTION: RISK OF EXPLOSION IF BATTERY IS REPLACED BY AN INCORRECT TYPE. DISPOSE OF USED BATTERIES ACCORDING TO THE INSTRUCTIONS.

• CHARGERS:

Mains powered chargers will operate within the temperature range of: 0°C (32°F) to 40°C (104°F).

The chargers designed for your phone meet the standard for safety of information technology equipment and office equipment use. They are also compliant with the ecodesign directive 2009/125/EC. Due to different applicable electrical specifications, a charger you purchased in one jurisdiction may not work in another jurisdiction. They should be used for this purpose only.

1.2 Radio waves

Proof of compliance with international standards (ICNIRP) or with European Directive 2014/53/EU (RED) is required of all phone models before they can be put on the market. The protection of the health and safety for the user and any other person is an essential requirement of these standards or this directive.

THIS DEVICE MEETS INTERNATIONAL GUIDELINES FOR EXPOSURE TO RADIO WAVES.

Your phone is a radio transmitter and receiver. It is designed not to exceed the limits for exposure to radio waves (radio frequency electromagnetic fields) recommended by international guidelines. The guidelines were developed by an independent scientific organisation (ICNIRP) and include a substantial safety margin designed to assure the safety of all persons, regardless of age and health.

The radio wave exposure guidelines use a unit of measurement known as the Specific Absorption Rate, or SAR. The SAR limit for mobile devices is 2 W/kg.

Tests for SAR are conducted using standard operating positions with the device transmitting at its highest certified power level in all tested frequency bands. The highest SAR values under the ICNIRP guidelines for this device model are:

Maximum SAR for this model and conditions under which it was recorded		
Head SAR	WWAN+WLAN	0.87 W/kg
Body-worn SAR	WWAN+WLAN	1.52 W/kg

During use, the actual SAR values for this phone are usually well below the values stated above. This is because, for purposes of system efficiency and to minimise interference on the network, the operating power of your phone is automatically decreased when full power is not needed for the call. The lower the power output of the phone, the lower its SAR value.

Body-worn SAR testing has been carried out at a separation distance of 5 mm. To meet RF exposure guidelines during body-worn operation, the phone should be positioned at least this distance away from the body.

If you are not using an approved accessory ensure that whatever product is used is free of any metal and that it positions the phone the indicated distance away from the body.

Organisations such as the World Health Organisation and the US Food and Drug Administration have stated that if people are concerned and want to reduce their exposure they could use a hands-free device to keep the phone away from the head and body during phone calls, or reduce the amount of time spent on the phone.

For more information, you can go to www.alcatelmobile.com.

Additional information about electromagnetic fields and public health are available on the following site: <http://www.who.int/peh-emf>.

Your phone is equipped with a built-in antenna. For optimal operation, you should avoid touching it or degrading it.

As mobile devices offer a range of functions, they can be used in positions other than against your ear. In such circumstances the phone will be compliant with the guidelines when used with a headset or USB data cable. If you are using another accessory ensure that whatever product is used is free of any metal and that it positions the phone at least 5 mm away from the body.

Please note by using the device some of your personal data may be shared with the main device. It is under your own responsibility to protect your own personal data, not to share with it with any unauthorised devices or third party devices connected to yours. For products with Wi-Fi features, only connect to trusted Wi-Fi networks. Also when using your product as a hotspot (where available), ensure your network security. These precautions will help prevent unauthorised access to your phone. Your product can store personal information in various locations including a SIM card, memory card, and built-in memory. Be sure to remove or clear all personal information before you recycle, return, or give away your product. Choose your apps and updates carefully, and install from trusted sources only. Some apps can impact your product's performance and/or have access to private information including account details, call data, location details, and network resources.

Note that any data shared with TCL Communication Ltd. is stored in accordance with applicable data protection legislation. For these purposes TCL Communication Ltd. implements and maintains appropriate technical and organisational measures to protect all personal data, for example, against unauthorised or unlawful processing and accidental loss or destruction of or damage to such personal data whereby the measures shall provide a level of security that is appropriate having regard to

- The technical possibilities available;
- The costs for implementing the measures;
- The risks involved with the processing of the personal data, and;
- The sensitivity of the personal data processed.

You can access, review, and edit your personal information at any time by logging into your user account, visiting your user profile or by contacting us directly. Should you require us to edit or delete your personal data, we may ask you to provide us with evidence of your identity before we can act on your request.

1.3 Licences



microSD Logo is a trademark.



The Bluetooth word mark and logos are owned by the Bluetooth SIG, Inc. and any use of such marks by TCL Communication Ltd. and its affiliates is under licence. Other trademarks and trade names are those of their respective owners.

Alcatel 5026D Bluetooth Declaration ID D037884



The Wi-Fi Logo is a certification mark of the Wi-Fi Alliance.

Google, the Google logo, Android, the Android logo, Google Search™, Google Maps™, Gmail™, YouTube, Google Play Store, Google Latitude™, and Hangouts™ are trademarks of Google Inc.

The Android robot is reproduced or modified from work created and shared by Google and used according to terms described in the Creative Commons 3.0 Attribution License (the text will show when you touch Google legal in Settings > About phone > Legal information)⁽¹⁾.

You have purchased a product which uses the open source (<http://opensource.org/>) programmes mtd, msdosfs, netfilter/iptables and initrd in object code and other open source programs licensed under the GNU General Public Licence and Apache Licence. We will provide you with a complete copy of the corresponding source codes upon request within a period of three years from the distribution of the product by TCL Communication Ltd.

You may download the source codes from <http://sourceforge.net/projects/alcatel/files/>. The provision of the source code is free of charge from the internet.

We hereby point out that the end user warranty for infringement IPR is solely limited to the EU.

If and to the extent that the Product is exported, taken with, or used by end customer or end user outside the EU any responsibility, warranty or indemnification of manufacturer and its suppliers in regard to the Product expires (including any indemnification in regard to infringement IPR).

General information

- Internet address: www.alcatelmobile.com
- Hotline: See the "SERVICES" leaflet that came with your phone or go to our website.
- Manufacturer: TCL Communication Ltd.
- Address: 5/F, Building 22E, 22 Science Park East Avenue, Hong Kong Science Park, Shatin, NT, Hong Kong.

⁽¹⁾ May not be available in all countries.

- Electronic labeling path: Touch Settings > Regulatory & safety or press *#07#, you can find more information about labelling⁽¹⁾.

On our website, you will find our FAQ (Frequently Asked Questions) section. You can also contact us by email to ask any questions you may have.

This radio equipment operates with the following frequency bands and maximum radio-frequency power:

GSM 900: 34 dBm

GSM 1800: 31 dBm

WCDMA Band I: 23.5 dBm

WCDMA VIII: 24 dBm

802.11b: 16 ± 1 dBm

802.11g: 14.5 ± 1 dBm

802.11n HT20: 14.5 ± 1 dBm

802.11n HT40: 11 ± 1 dBm

Bluetooth: 3± 0.5 dBm

Hereby, TCL Communication Ltd. declares that the radio equipment type Alcatel 5026D is in compliance with Directive 2014/53/EU.

The full text of the EU declaration of conformity is available at the following internet address: http://www.alcatel-mobile.com/EU_doc.

The description of accessories and components, including software, which allow the radio equipment to operate as intended, can be obtained in the full text of the EU declaration of conformity at the following internet address: http://www.alcatel-mobile.com/EU_doc.

1.4 Protection against theft⁽²⁾

Your phone is identified by an IMEI (phone serial number) shown on the packaging label and in the phone's memory. We recommend that you note the number the first time you use your phone by entering * # 0 6 # and keep it in a safe place. It may be requested by the police or your operator if your phone is stolen. This number allows your phone to be blocked preventing a third person from using it, even with a different SIM card.

⁽¹⁾ It depends on countries.

⁽²⁾ Contact your network operator to check service availability.

1.5 Disclaimer

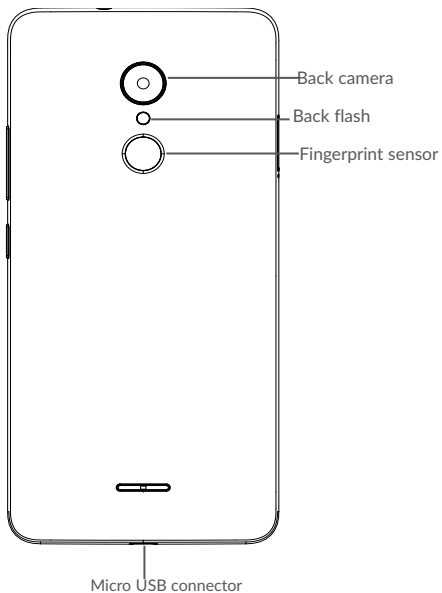
There may be certain differences between the user manual description and the phone's operation, depending on the software release of your phone or specific operator services.

TCL Communication Ltd. shall not be held legally responsible for such differences, if any, nor for their potential consequences, which responsibility shall be borne by the operator exclusively. This phone may contain materials, including applications and software in executable or source code form, which is submitted by third parties for inclusion in this phone ("Third Party Materials"). All Third Party Materials in this phone are provided "as is", without warranty of any kind, whether express or implied. The purchaser undertakes that TCL Communication Ltd. has complied with all quality obligations incumbent upon it as a manufacturer of mobile devices and phones in complying with Intellectual Property rights. TCL Communication Ltd. will at no stage be responsible for the inability or failure of the Third Party Materials to operate on this phone or in interaction with any other device. To the maximum extent permitted by law, TCL Communication Ltd. disclaims all liability for any claims, demands, suits or actions, and more specifically - but not limited to - tort law actions, under any theory of liability, arising out of the use, by whatever means, or attempts to use, such Third Party Materials. Moreover, the present Third Party Materials, which are provided free of charge by TCL Communication Ltd., may be subject to paid updates and upgrades in the future; TCL Communication Ltd. waives any responsibility regarding such additional costs, which shall be borne exclusively by the purchaser. TCL Communication Ltd. shall not be held responsible for the lack of availability of any application, as its availability depends on the country and the operator of the purchaser. TCL Communication Ltd. reserves the right at any time to add or remove Third Party Materials from its phones without prior notice; in no event shall TCL Communication Ltd. be held responsible by the purchaser for any consequences of such removal.

Your mobile

1.1 Keys and connectors





Note: Some models may have only the slot for SIM 1. Some models may not support the fingerprint feature.



Overview key

- Touch to switch between individual app activities and documents.



Home key

- From any application or screen, touch to return to the Home screen.
- Long press to turn on Google Now. You can get help such as getting directions and restaurant information based on the content detected on the screen.



Back key

- Touch to go back to the previous screen, or close a dialog box, options menu, the notification panel, etc.



Power key

- Press: Lock the screen/Light up the screen.
- Press and hold: Show the popup menu to select from Power off/Restart/Flight mode.
- Press and hold the **Power** key and **Volume down** key to make a screenshot.
- Press and hold the **Power** key for at least 10 seconds to force reboot.



Volume Keys

- In call mode, adjusts the earpiece or headset volume.
- In Music/Video/Streaming mode, adjusts the media volume.
- In general mode, adjusts the ringtone volume.
- Mutes the ringtone of an incoming call.
- In camera preview mode, press **Volume up** or **down** key to take a photo or press and hold to make burst shoot.

1.2 Getting started

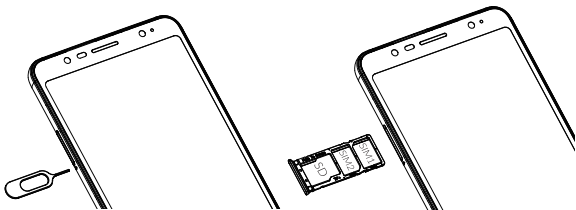
1.2.1 Set up

Inserting or removing the SIM/microSD card


You must insert your SIM card to make phone calls. You do not need to power off your phone before inserting or removing the SIM card as this phone supports hot swap.



Your phone only supports nano cards. Do not attempt to insert other SIM types like micro SIM and standard cards; otherwise this may cause damage to your phone.

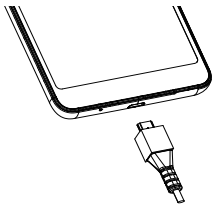


Charging the battery

You are advised to fully charge the battery (). Charging status is indicated by a percentage displayed on screen while the phone is powered off. The percentage increases as the phone is charged.



To reduce power consumption and energy waste when the battery is fully charged, disconnect your charger from the plug; switch off Wi-Fi, GPS, Bluetooth or background-running applications when not in use; reduce the backlight time, etc.



1.2.2 Power on your phone

Hold down the **Power** key until the phone powers on, unlock your phone (Swipe, PIN, Password, Pattern or fingerprint⁽¹⁾) if necessary and confirm. The Home screen is displayed.

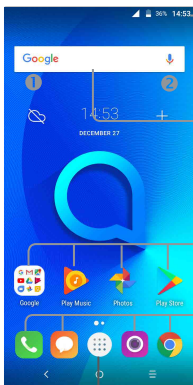
If you do not know your PIN code or forget it, contact your network operator. Be sure to keep your PIN code well.

1.2.3 Power off your phone

Hold down the **Power** key until options appear, select **Power off**.

1.3 Home screen

You can bring all the items (applications, shortcuts, folders and widgets) you love or use most frequently to your Home screen for quick access. Touch the **Home** key to switch to the Home screen.



Status bar

- Status/Notification indicators
- Touch and drag down to open the notification panel.

Search bar

- Touch ❶ to enter text search screen.
- Touch ❷ to enter voice search screen.

Touch an icon to open an application, folder, etc.

Favourite tray applications

- Touch to enter the application.
- Long press to move or remove applications.

Touch to enter the applications list.

The Home screen is provided in an extended format to allow more space for adding applications, shortcuts etc. Slide the Home screen horizontally left and right to get a complete view.

⁽¹⁾ Some models may not support the fingerprint feature.

1.3.1 Using the touchscreen



To access an application, touch it with your finger.



To enter the available options for an item, long press the item. For example, select a contact in Contacts, long press this contact, an options list will appear.



Place your finger on the screen to drag an object to another location.



Slide the screen to scroll up and down the applications, images, and web pages. You can slide the screen horizontally too.

The device also supports one finger zooming in the Camera and Gallery functions. Double touch the screen to zoom in/out.



Similar to swiping, but flicking makes it move quicker.



Place two fingers on the screen surface and draw them apart or together to scale an element on the screen.



Automatically change the screen orientation from portrait to landscape by turning the phone sideways to have a better screen view.

1.3.2 Status bar

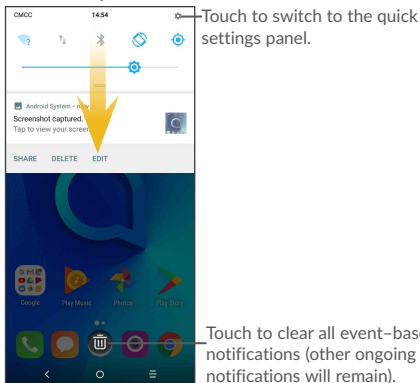
From the status bar, you can view both phone status (on the right side) and notification information (on the left side).

Drag down the status bar to view notifications and drag again to enter the quick settings panel.

Touch and drag up to close it. When there are notifications, you can touch them to access notifications.

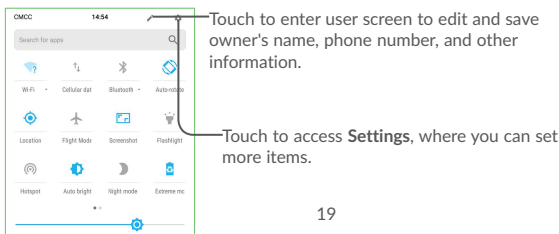
Notification panel

When there are notifications, touch and drag down the Status bar to open the Notification panel to read more detailed information.



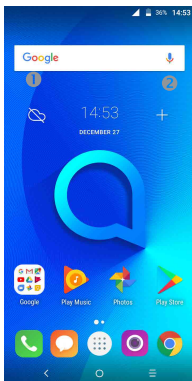
Quick settings panel

Touch and drag down the Notification panel or touch the down-sided arrow to open the Quick settings panel. You can enable or disable functions or change modes by touching the icons. Touch the EDIT button to customise your Quick settings panel.




1.3.3 Search bar


The phone provides a Search function which can be used to locate information within applications, the phone or the web.



1 Search by text

- Touch the Search bar from the Home screen.
- Enter the text/phrase you want to search for.
- Touch the  icon on the keyboard if you want to search on the web.


2 Search by voice

- Touch  from the Search bar to display a dialog screen.
- Speak the word/phrase you want to search for. A list of search results will display for you to select from.

1.3.4 Lock/Unlock your screen

To protect your phone and privacy, you can lock the phone screen by choosing slide or creating a pattern, PIN or password, etc.

To create a screen unlock pattern

- From the Home screen, touch  to open the applications list, then touch **Settings>Security>Screen lock>Pattern**.
- Draw your own pattern.

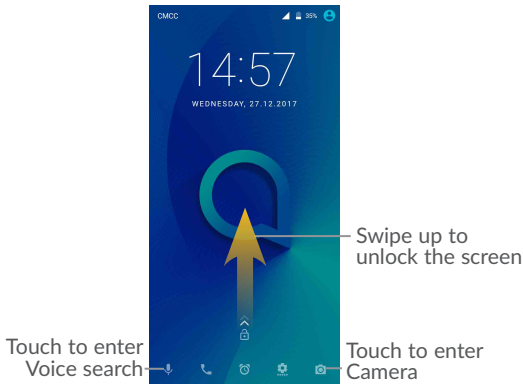
To lock phone screen

Press the **Power** key once to lock the screen.

To unlock the phone screen

Press the **Power** key once to light up the screen, slide to draw the unlock pattern you have created or enter your PIN or password, etc. to unlock the screen.

If you have chosen **Swipe** as the screen lock, you can press the **Power** key to light up the screen, then swipe up to unlock the screen, double touch the camera icon to enter Camera or double touch the Voice search icon to enter Voice search.



If you have set and added fingerprints⁽¹⁾ on the phone by touching **Settings>Security>Fingerprint**, you can put the finger on the fingerprint sensor to unlock the phone.

⁽¹⁾ Some models may not support the fingerprint feature.

1.3.5 Personalise your Home screen

Add

You can long press a folder, an application or a widget to activate the Move mode, and drag the item to your preferred Home screen.

Reposition

Long press the item to be repositioned to activate the Move mode, drag the item to the desired position and then release. You can move items both on the Home screen and the Favourite tray. Hold the icon on the left or right edge of the screen to drag the item to another Home screen.

Remove

Long press the item to be removed to activate the Move mode, drag the item up to the top of the X icon, and release after the item turns red.

Create folders

To improve the organisation of items (shortcuts or applications) on the Home screen and the Favourite tray, you can add them to a folder by stacking one item on top of another. To rename a folder, open it and touch the folder's title bar to input the new name.

Wallpaper customisation

Long press the empty area in the Home screen, then touch **WALLPAPERS** to customise wallpaper.

1.3.6 Widgets and recently-used applications

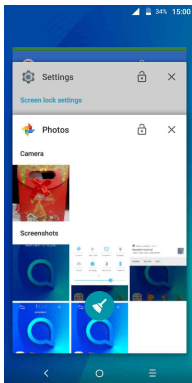
Consult widgets

Long press the empty area in the Home screen, then touch **WIDGETS** to display all widgets.

Touch the selected widget and slide it to move to your preferred screen.

Consult recently-used applications

To consult recently-used applications, touch the **Overview** key. Touch a thumbnail in the window to open the application.



Touch one thumbnail and slide it right/left or touch **X** to close the application.


Touch clear icon at the middle bottom of the screen to close all the running applications.

1.3.7 Volume adjustment

Using the volume key

Press the **Volume** key to adjust the volume. To activate the vibrate mode, press the **Volume down** key until the phone vibrates.

Using the settings menu

From the Home screen, touch  to open the applications list, then touch **Settings>Sound** to set the volume of media, ringtone, alarm, etc. to your preference.

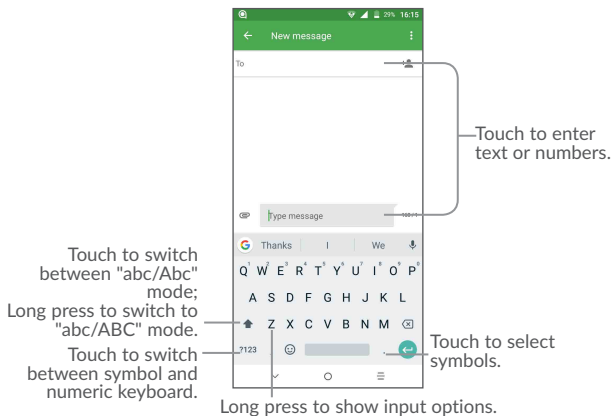
2 Text input

2.1 Using the Onscreen Keyboard

Onscreen Keyboard settings

Touch **Settings>Language & input**, touch the keyboard you want to set up and a series of settings will become available.

2.1.1 Virtual keyboard



2.2 Text editing

You can edit the texts you entered.

- Long press or double touch within the texts you want to edit.
- Drag the tabs to change the checked texts.
- The following options will show: **CUT**, **COPY** and **SHARE**.



You can also insert new texts if preferred

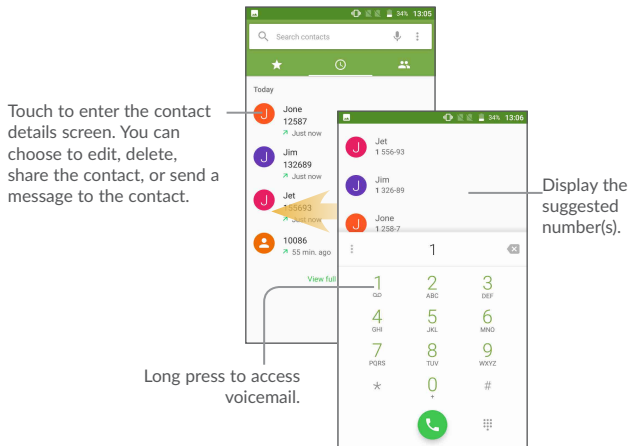
- Touch where you want to type, or long press the blank, the cursor will blink and the tab will show. Drag the tab to move the cursor.
- If you have cut or copied any text, touch the tab to show the **PASTE** icon which allows you to complete pasting immediately.

3 Call, Call log and Contacts

3.1 Call

3.1.1 Making a call

You can launch a call by using **Call**. Touch the  icon on the Home screen to access the **Call** application.



Touch to enter the contact details screen. You can choose to edit, delete, share the contact, or send a message to the contact.


Long press to access voicemail.

Display the suggested number(s).



Enter the desired number from the keyboard and touch  to place the call or select a contact from **CONTACTS** or **RECENTS** by sliding or touching tabs, then to make the call.

The number you entered can be saved to **Contacts** by touching **Create new contact** or **Add to a contact**.


If you make a mistake, you can delete the incorrect digits by touching .

To hang up a call, touch .

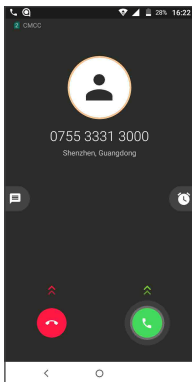
International call

To dial an international call, long press  to enter "+", then enter the international country prefix followed by the full phone number and touch .

Emergency call

If your phone has network coverage, dial the emergency number and touch  to make an emergency call. This works even without a SIM card and without typing the PIN code.

3.1.2 Answering or rejecting a call



When you receive a call:

Slide up the icon  to answer;

Slide up the icon  to reject;

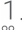
Touch **Message** to reject the call by sending a preset message.

Touch **Reminder** to reject the call and set an alarm for calling back.

To mute the ringtone volume of an incoming call, press the **Volume up/down** key, or turn the phone over (when the **Settings\Gestures\Turn over to mute** option is activated).

3.1.3 Calling your voicemail

Your voicemail is provided by your network to avoid missing calls. It works like an answering machine that you can consult at any time.

To access your voicemail, long press  .

To set your voicemail number: Touch  > **Settings** > **Calling accounts**, select an SIM card, and then touch **Voicemail**.

If you receive a voicemail, a voicemail icon  appears on the Status bar. Open the Notification panel and touch **New voicemail**.

3.1.4 During a call

To adjust the volume during a call, press the **Volume up/down** key.



Touch to end the current call.



Touch to activate the speaker during the current call. Touch this icon again to deactivate the speaker.



Touch to mute the current call. Touch this icon again to unmute the call.



Touch to display the Dial pad.



Touch to hold the current call. Touch this icon again to retrieve the call.



Touch to add a call to the current conversation.

Touch to check contacts or record call



To avoid accidental operation of the touchscreen during a call, the screen will be locked automatically when you put the cellphone close to your ear; and it will be unlocked when the cellphone is taken away from your ear.


3.1.5 Managing multiple calls

With this phone you can handle multiple calls at the same time.

Swap calls

When you accept two calls, touch **on hold**, you can now switch between two lines. The current call will be put on hold and you are able to join the other call.

3.1.6 Call settings

Touch  from the Call screen, then touch **Settings**. The following options are available:

Display options

- **Sort by:** Touch to sort the list by the first name or last name.
- **Name format:** Touch to choose whether to display first name first, or last name first.

Quick responses

Touch to edit quick response.

Sound and vibrate

Touch to set incoming call ringtone, and mark the checkbox to enable dial pad tones or vibrate for calls.

Calling accounts

- Voicemail

Service: Opens a dialog box where you can select your operator's voicemail service or another service.

Setup: If you are using your operator's voicemail service, this opens a dialog box where you can enter the phone number to use for listening to and managing your voicemail. You can enter a comma (,) to insert a pause into the number – for example, to add a password after the phone number.

Sound: Touch to set the sound when a new voicemail arrives.

Vibrate: Mark the checkbox to enable vibration when a new voicemail arrives.

- Fixed Dialling Numbers

Fixed dialling number (FDN) is a SIM service mode, where outgoing calls are restricted to a set of phone numbers. These numbers are added to the FDN list. The most common practical application of FDN is for parents to restrict the phone numbers to which their children can dial. For security reasons, you'll be prompted to enable FDN by entering SIM PIN2 which is usually acquired from your service provider or SIM maker.

- **Call forwarding:** Touch to configure how your calls are forwarded when you are busy, unanswered or unreachable.

Additional settings: Touch **Caller ID** to use default operator settings to display your number in outgoing calls. Mark the **Call waiting** check box to notify you of new incoming calls during a call.

Call barring: Touch to configure Call barring settings. Mark the checkbox to activate the call barring for outgoing and incoming calls.

3.2 Call log

You can access your call memory by touching **RECENTS**  tab from the Call screen to view Missed calls, Outgoing calls and Incoming calls.

Touch a contact or number to view information or further operations, you can launch a new call, send SMS to the contact or number, view detailed information of the call, or clear the call.

To clear call log, touch the trash icon.

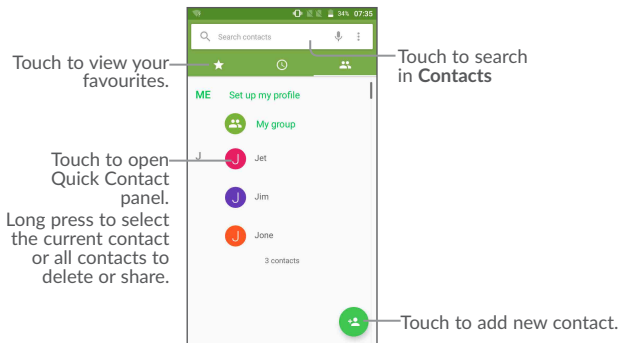
3.3 Contacts

Contacts enables quick and easy access to the contact you want to reach.



You can view and create contacts on your phone and synchronise these with your Gmail contacts or other applications on the web or on your phone.

3.3.1 Consult your Contacts

To see your contacts, touch  from the Home screen, then select **Contacts**.




Delete a contact

To delete a contact, long press the contact you want to delete, the icon will turn to , then touch .




The contact you have deleted will also be removed from other applications on the phone or web the next time you synchronise your phone.

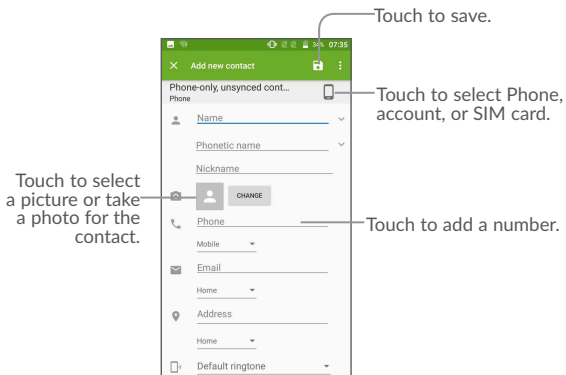
Touch  to display the contacts list option menu, following actions are enabled:


- **Call history** Touch to view the call history.
- **Contacts to display** Choose contacts to display.
- **Import/Export** Import or export contacts between phone, SIM card, microSD card and phone storage.
- **Clear frequents** Touch to clear the frequently contacted list
- **Block numbers** Touch to view your blocked numbers. You can also unblock them.
- **Merge contacts** Find duplicate contacts and merge them.
- **Settings** Touch to change the display of the sort list and contact names.

3.3.2 Adding a contact

Touch  in the contact list to create a new contact.


You are required to enter the contact's name and other contact information. By scrolling up and down the screen, you can move from one field to another.





When finished, touch  to save.

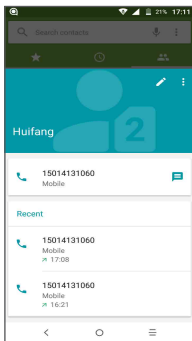
3.3.3 Editing your contacts

To edit contact information, touch  in the contact details screen to edit.

When finished, touch  to save.

3.3.4 Use Quick contact for Android


Touch a contact to open Quick contact for Android, then you can touch  or the number to make a call, touch  to send a message.




The icons available on the Quick contact panel depend on the information you have for the contact and the applications and accounts on your phone.

3.3.5 Importing, exporting and sharing contacts


This phone enables you to import or export contacts between your phone, SIM card and phone storage.


From the Contacts screen, touch  to open the options menu, touch **Import/Export**, then select from **SIM/phone/Phone storage** to copy contact.

You can share a single contact or contacts with others by sending the contact's vCard to them via Bluetooth, Gmail, etc.

Touch a contact you want to share, touch the  icon and **Share** from the contact details screen. Select the application you want to share to perform this action.




3.3.6 Displaying contacts

You can configure which list of contacts, for each account, you want to display in the Contacts list. Touch  and touch **Contacts to display** from contacts list screen, then you can choose which contacts to display.

Touch  and **Settings** to sort the list by the given name or family name, as well as viewing contact names by given/family name first.


3.3.7 Accounts

Contacts, data or other information can be synchronised from multiple accounts, depending on the applications installed on your phone.


To add an account, touch  from the home screen, then touch  >  and select **Settings\Manage accounts\Add account**.

You are required to select the kind of account you are adding, like Google, Corporate, etc.

As with other account setup, you need to enter detailed information, like username, password, etc.

You can remove an account to delete it and all associated information from the phone. Touch the account you want to delete, touch  and select **Remove account**, then confirm.

Turn on/off the auto-sync

In the **Accounts** screen, touch  and mark the **Auto-sync data** checkbox. When activated, all changes to information on the phone or online will be automatically synchronised with each other.

4 Messaging and Gmail

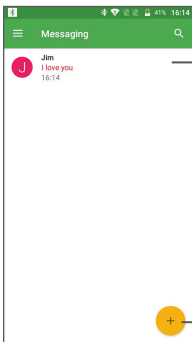
4.1 Messaging

You can create, edit and receive SMS and MMS with this phone.

To send a message, touch **Messaging** from the Home screen.

4.1.1 Write message

On the message list screen, touch the new message icon  to write text/multimedia messages.






- Touch to view the whole message thread.
- Long press to activate delete mode.

Touch to create a new message.



For saved contacts, touch the photo to open the Quick contact panel to communicate with the contact. For unsaved contacts, touch the photo to add the number to your **Contacts**.

Sending a text message

Enter the mobile phone number of the recipient in the **To** bar or touch  to add recipients. Touch the **Send message** bar to enter the text of the message. Touch  to insert emoticons. When finished, touch  to send the text message.

An SMS message of more than 160 characters will be charged as several SMS. A counter will be on the right of the text box to remind you how many characters are allowed to be entered in one message.





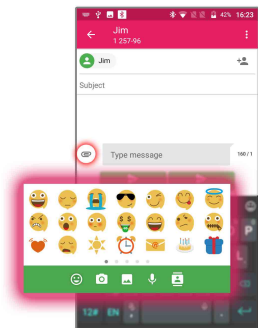
Specific letters (accented) will also increase the size of the SMS, this may cause multiple SMS to be sent to your recipient.


Sending a multimedia message

MMS enables you to send video clips, images, photos, animations, slides and sounds to other compatible mobiles and e-mail addresses.


An SMS will be converted to MMS automatically when media files (pictures, video, audio, slides, etc.) are attached or subject or contact information are added.

To send a multimedia message, enter the recipient's phone number in the **To** bar and touch the **Type message** bar to enter the text of the message. Touch  to open the options menu, touch **Add subject** to insert a subject. Touch  and then attach a picture, video, audio and so on.








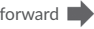


When finished, touch  to send the multimedia message.

4.1.2 Manage messages


When receiving a message, an  icon will appear on the status bar as a notification. Drag down the status bar to open the Notification panel, touch the new message to open and read it. You can also access the Messaging application and touch the message to open it.

Messages are displayed in conversational order.

Touch a message to enter the message composing screen:

- Touch  to call the number;
- Touch  to save the number to contacts or view the contact details if the number has been saved;
- To reply to a message, enter the text, or touch  to insert quick text, contact etc., after edit then touch .
- Long press a message to show the following icons: copy text , forward , delete  etc., touch  to save the message to SIM card.

4.1.3 Adjust message settings

You can adjust a range of message settings. From the Messaging application screen, touch  and touch **Settings**.

GENERAL

- **SMS enabled** Touch to change your default SMS app.
- **Quick text** Touch to edit quick response text.
- **Delete old messages** Select to delete old messages when the maximum number of stored messages is reached.
- **Text message limit** Touch to set the maximum number of text messages to be saved per conversation.
- **Multimedia message limit** Touch to set the maximum number of multimedia messages to be saved per conversation.

Notifications

- **Notifications** Mark the checkbox to display message notifications in the status bar.

Text message (SMS)

- **Delivery report** Select to request a delivery report for each multimedia message you send.
- **Manage SIM card messages** Touch to manage text messages stored on your SIM card.
- **SMS Service Centre** Touch to edit or view the service centre number.
- **Validity period** Touch to select the validity period, during which the network provider will continue to try to send the message.
- **Character code** Touch to select the Character code.
- **SMS Signature** Mark the checkbox to edit SMS signature

Multimedia message (MMS)

- **Delivery reports** Select to request a delivery report for each multimedia message you send.
- **Read reports** Select to request a report on whether each recipient has read a multimedia message sent by you.
- **Auto-retrieve** Select to download the full MMS message (including message body and attachment) automatically to your phone. Otherwise, download only the MMS message header.

- **Roaming auto-retrieve** Select to download the full MMS message (including message body and attachment) automatically when roaming. Otherwise, download only the MMS message header to avoid extra charges.
- **Creation mode** Select to change creation mode.
- **Maximum message size** Select to choose the maximum message size.
- **Priority** Touch to set the priority.







4.2 Gmail


As Google's web-based email service, Gmail is configured when you first set up your phone. Gmail on your phone can be automatically synchronised with your Gmail account on the web.

4.2.1 To access Gmail

From the Home screen, touch  to enter the applications list, then touch **Gmail**.

4.2.2 To create and send emails

- Touch the icon  from the Inbox screen.
- Enter recipient(s)'s email address in **To** field, and if necessary, touch the downward arrow to add a copy (Cc) or a blind copy (Bcc) to the message.
- Enter the subject and the content of the message.
- Touch  to add an attachment.
- Finally, touch the  icon to send.
- If you do not want to send the mail out right away, you can touch  and **Save draft** or touch the **Back** key to save a copy. To view the draft, touch the icon , then select **Drafts**.
- If you do not want to send or save the mail, you can touch  and then touch **Discard**.



To add a signature to emails, touch  and **Settings** from inbox screen, choose an account, then touch **Signature**.

4.2.3 To receive and read your emails






When a new email arrives, you will be notified by a ringtone or vibration, and an  icon will appear on the Status bar.

Touch and drag down the Status bar to display the Notification panel and touch the new email to view it. You can also access the Gmail Inbox label and touch the new mail to read it.

You can search for an email by sender, subject, label, etc.


- Touch the  icon from Inbox screen.
- Enter the keyword you want to search for in the search box and touch .

4.2.4 To reply or forward emails

- **Reply** When viewing an email, touch  to reply to the sender of this mail.
- **Reply all** Touch  and select “**Reply all**” to send the message to all people in a mail loop.
- **Forward** Touch  and select “**Forward**” to forward the received mail to other people.
- **Add star** Touch  and select “**Add star**” to add a star for the mail.
- **Print** Touch  and select “**Print**” to print the mail.




4.2.5 Managing Gmails by Labels

To conveniently manage conversations and messages, you can organise them using a Label.

To label a conversation when reading a conversation’s messages, touch  and then choose **Move to**.

To view conversations by labels when viewing your inbox or another conversation list, touch the icon , then touch a label to view a list of conversations with that label.

Long press an email to activate batch mode and produce the following options:

-  Touch to archive the email message. To display the archived messages, you can touch in Inbox screen then touch **All mail**.
-  Touch to delete the email message.
-  Touch to mark an email message as read or unread.

Touch  to access the following options.

- **Move to** Touch to move the mail to other labels.
- **Change labels** Touch to change the label of the email message or conversation.
- **Add star** Touch to remark in star for the mail
- **Mark important** To Mark the email as important or not important.
- **Mute** Touch to hide the mail and the mail could be found by touching **All mail**.
- **Report spam** To report the email message/conversation as spam.

4.2.6 Gmail settings

To access Gmail settings, touch the icon  and select **Settings**.

General settings

- **Gmail default action** Touch to set the default action: archive or delete.
- **Conversation view** Mark the checkbox to group emails in the same conversation for IMAP, POP3 and Exchange accounts.
- **Swipe actions** Mark the checkbox to enable a Swipe to archive messages within the conversation list.
- **Sender image** Mark the checkbox to show the sender's image beside their name in the conversation list.
- **Default reply action** Touch to choose your default reply action for Reply/Reply all
- **Auto-fit messages** Mark the checkbox to shrink messages to fit the screen and allow zooming.

- **Auto-advance** Touch to select which screen (**Newer**, **Older** or **Conversation list**) to show after you delete or archive a conversation.
- **Open web links in Gmail** Mark the checkbox to turn on for faster browsing
- **Confirm before deleting** Mark the checkbox to receive a request to confirm your action before deleting emails.
- **Confirm before archiving** Mark the checkbox to receive a request to confirm your action before archiving emails.
- **Confirm before sending** Mark the checkbox to receive a request to confirm your action before sending emails.


Touch an account to view the following settings:

- **Inbox type** To set this inbox as the default or priority Inbox.
- **Inbox categories** Mark the checkbox to enable the folder to appear under the Inbox folder.
- **Notifications** Mark the checkbox to activate a notification when a new email arrives.
- **Inbox sound & vibrate** Touch to set Sync message, Ringtone, Vibrate and Notify once.
- **Signature** To add a signature text to the end of each mail you send.
- **Smart Reply** Mark the checkbox to show suggested replies when available
- **Vacation responder** Touch to set a notification when you are out of office.
- **Sync Gmail** Mark the checkbox to turn on/off Gmail sync.
- **Days of mail to sync** Touch to set the duration of days for mail sync.
- **Manage labels** Touch to open the Label screen, where you can manage synchronisation and notifications.
- **Download attachments** Mark the checkbox to auto download attachments to recent messages via Wi-Fi.
- **Images** Touch to set whether images are always shown or if you will be prompted to show them.

5 Calendar & Clock & Calculator

5.1 Calendar

Use the Calendar to keep track of important meetings, appointments, etc.

To view the calendar and create events, touch  from the Home screen, then touch **Calendar**.

5.1.1 Multimode view

You can display the Calendar by Schedule, Day, 3-day, Week, or Month.

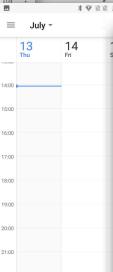
Schedule view



Day view



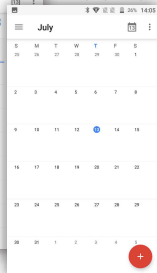
3-day view



Week view



Month view




5.1.2 To create new events



You can add new events from any Calendar view.

- Touch  to access a new event edit screen.

- Fill in all required information for this new event. If it is a whole-day event, you can select **All-day**.
- Invite guests to the event. Enter the email addresses of the guests you want to invite with commas to separate. The guests will receive an invitation from Calendar and Email.
- When finished, touch **SAVE** from the top of the screen.

To quickly create an event from the Week view screens, touch an empty spot to select a target area which will then turn , and touch the icon to create the new event.

5.1.3 To delete or edit an event

To delete or edit an event, touch the event to enter its details screen, touch the  icon to edit the event, and touch  **Delete** to delete.

5.1.4 Event reminder

If a reminder is set for an event, the upcoming event icon  will appear on the Status bar as a notification when the reminder time arrives.

Touch and drag down the status bar to open the notification panel, touch an event name to view the Calendar notification list.

Touch the **Back** key to keep the reminders pending in the status bar and the notification panel.


5.2 Clock

Your mobile phone has a built-in clock.

To view the current time, touch  from the Home screen, then touch **Time**.

5.2.1 World clock

To view the world clock, touch  on the Time screen.

Touch the  icon to add a time zone.

5.2.2 Alarm


From the Time screen, touch  to enter the **Alarm** screen.

Touch the switch  to enable the alarm.

Touch  to add a new alarm, the following options will appear:





- **Time** Touch to set the alarm time.
- **Repeat** Touch to select the days when you want the alarm to work.
- **Ringtone** Touch to select a ringtone for the alarm.
- **Vibrate** Mark the checkbox to activate vibration.
- **Label** Touch to set a name for the alarm.

Touch a currently existing alarm to enter the alarm editing screen.

Touch  then touch  to delete the selected alarm.





5.2.3 Countdown



From the Time screen, touch  to enter the **Countdown** screen.

- Enter the time. The time should be typed in second, minute and hour number sequence.
- Touch  icon to activate Countdown.
- Touch the  icon to set the countdown time in panel.
- Touch  icon to deactivate Countdown.
- Touch  icon to delete current countdown label.


5.2.4 Timer

From the Time screen, touch  to enter the **Timer** screen.

- Touch  to activate the timer.
- Touch  to show a list of records according to the updated time.
- Touch  to halt the total and lap times. These will only restart after  is touched.

- Touch  to delete the record.
- Touch  to share.


5.2.5 Adjust Clock settings

Touch the  icon and then **Settings**, the following options can now be adjusted:

- **Style** Touch to set the clock style to Analogue or Digital.
- **Automatic home clock** Mark the checkbox to enable the function when travelling in an area where the time is different, add a clock for home.
- **Home time zone** Touch to set Home time zone.
- **Silence after** Touch to set a temporary turn off time for an alarm.
- **Snooze length** Touch to set the duration of alarms.
- **Alarm volume** Touch to set alarm volume.
- **Gradually increase volume** Touch to choose the time to gradually increase volume
- **Volume buttons** Touch to set side **Volume up/down** key behaviours when alarm sounds: **Snooze**, **Dismiss** or **Do nothing**.
- **Start week on** Touch to choose which day as the one to start week on

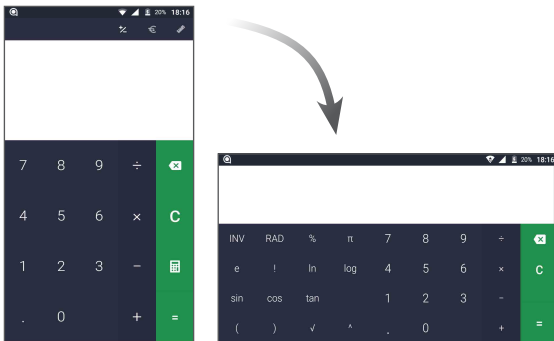
5.3 Calculator



With the Calculator, you can solve many mathematical problems.

To use the calculator, touch  from the Home screen, then touch **Calculator**.

There are two panels available: Basic panel and Advanced panel.

To switch between panels, turn the device to the landscape mode from the basic panel or swipe left to open the Advanced panel⁽¹⁾.



Enter a number and the arithmetic operation to be performed, enter the second number, then touch “=” to display the result. Touch  to delete digits one by one, long press  to delete all at one time.

⁽¹⁾ If Settings\Display\When device is rotated\Rotate the contents of the screen is enabled, this item will display.

6 Getting connected

To connect to the internet with this phone, you can use GPRS/EDGE/3G networks or Wi-Fi, whichever is most convenient.

6.1 Connecting to the Internet



6.1.1 GPRS/EDGE/3G

The first time you turn on your phone with your SIM card inserted, it will automatically configure your network service: GPRS, EDGE, 3G.

To check the network connection you are using, touch **Settings>More>Cellular networks>Access Point Names** or **Network carriers**.

To create a new access point

A new GPRS/EDGE/3G network connection can be added to your phone with the following steps:

- Touch **Settings>More>Cellular networks>Access Point Names**.
- Then touch the  key to enter the required APN information.
- When finished, touch the  key and touch **Save**.

To activate/deactivate Data roaming

When roaming, you can decide to connect/disconnect to a data service.

- Touch **Settings>More>Cellular networks**.
- Switch the toggle to activate data roaming.
- When Data roaming is disabled, you can still perform data exchange with a Wi-Fi connection (refer to "6.1.2 Wi-Fi").


To set preferred network mode

- Touch **Settings>More>Cellular networks>Preferred network type**.

6.1.2 Wi-Fi


Using Wi-Fi, you can connect to the Internet when your phone is within range of a wireless network. Wi-Fi can be used on your phone even without a SIM card inserted.

To turn Wi-Fi on and connect to a wireless network

- Touch **Settings**\Wi-Fi.
- Touch the switch  to turn on/off Wi-Fi.
- Once Wi-Fi is on, the detailed information of detected Wi-Fi networks is displayed.
- Touch a Wi-Fi network to connect to it. If the network you selected is secured, you are required to enter a password or other credentials (you may contact the network operator for details). When finished, touch **Connect**.

To activate notification when a new network is detected

When Wi-Fi is on and the network notification is activated, the Wi-Fi icon will appear on the status bar whenever the phone detects an available wireless network within range. The following steps activate the notification function when Wi-Fi is on:

- Touch **Settings**.
- Touch **Wi-Fi**, then touch the  icon from the Wi-Fi screen.
- Switch to toggle beside **Network notification** to activate/deactivate this function.

To add a Wi-Fi network

When Wi-Fi is on, you may add new Wi-Fi networks according to your preference.

- Touch **Settings**.
- Touch **Wi-Fi**, scroll to the bottom and touch **Add network**.
- Enter the name of the network and any required network information.
- Touch **SAVE**.

To forget a Wi-Fi network

The following steps prevent automatic connections to networks which you no longer wish to use.

- Turn on Wi-Fi, if it's not already on.
- In the Wi-Fi screen, touch the name of the saved network.
- Touch **FORGET** in the dialog that opens.

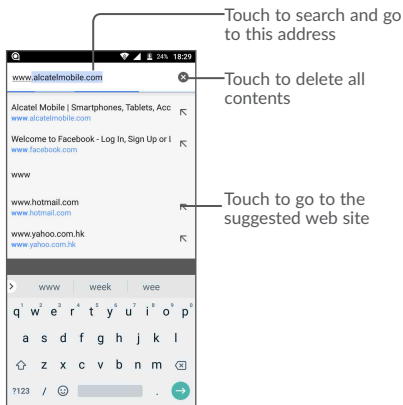
6.2 Chrome

Using Chrome, you can enjoy surfing the Web.

To surf the web, touch from **Chrome** the Home screen.

To go to a web page

On the Chrome screen, touch the URL bar at the top, enter the address of the web page, then confirm.




To set a homepage

- Touch the **⋮** icon from Chrome screen to display option menu, touch **Settings** \ **Home page**.
- Touch the switch on to set this website as your homepage.

Viewing web pages


When opening a website, you can navigate on web pages by sliding your finger on the screen in any direction to locate the information you want to view.

To find text on a web page

- Touch the  icon from Chrome screen to display option menu, and touch **Find in page**.
- Enter the text or phrase you want to find.
- Words with matching characters will be highlighted on the screen.
- Touch the up or down arrow to switch to the previous or next matching items.
- When finished, you can touch the **Back** key to close the search bar.





Further operations for the text on a web page

You can copy, share or search the text from a web page:






- Long press the text to highlight the text.
- Move two tabs to select the text.
- Touch the  icon to show further actions, including search on the web.
- When finished, touch the **Back** key to deactivate the mode.

To open new window/switch between windows

Multiple windows can be opened at the same time for your convenience.

- Touch  to open all windows' thumbnails.
- Slide up and down to view all windows, touch one to view it.
- Touch  to open a new window.
- Touch  icon and **New incognito tab** to open a window without any trace.
- To close a window, touch  on the window you want to close or slide it sideways.

Other options:

-  To forward the pages you have opened.
-  To add the current website page as a bookmark.
-  To download the page for offline read.
-  To see details about the current website.
-  To refresh the current page.
- **New tab** Touch to open a new web
- **New incognito tab** Touch to open the incognito web
- **Bookmarks** To see the bookmarks.
- **Recent tabs** To see the tabs you have recently closed.
- **History** To view your browsing history.
- **Downloads** To check the downloaded web

- **Request desktop site** To enable/disable computer version websites.

- **Settings** To access detailed Chrome settings.

- **Help & feedback** To get help tips and send feedback about Chrome.

6.2.1 Manage links, history, downloads


To manage a link, phone number or address displayed on a web page


- **Link** Touch the link to open the web page.
Long press the link to open options for further operation, like open in new window, save link, share link, copy link, etc.
- **Phone number** Touch to call the phone number.
- **Address** Touch to open Google Maps and locate the address.

To download a web application/view your downloads

Before downloading a web application, you need to enable your phone to install web applications (Touch **Settings>Security**, enable the **Unknown sources** by switching the toggle).



To download an item, touch the item or the link you want to download.

To cancel a download, touch the downloaded item from the Notification panel, select the item to be cancelled, and touch  to confirm.


To view items you have downloaded, touch  , then touch the application **Downloads**.

6.2.2 Manage bookmarks

To bookmark a web page




- Open the web page you want to bookmark.
- Touch the  icon and .

To open a bookmark

- Touch the  icon and **Bookmarks**.
- Touch the bookmark you want to open.

To edit a bookmark

- Touch the  icon and **Bookmarks**.


- Long press the bookmark you want to edit.
- Touch , and enter your changes.
- Touch  to move the bookmark to a folder.
- Touch  to delete a bookmark.

6.3 Connecting to Bluetooth devices⁽¹⁾


Bluetooth is a short-range wireless communication technology that you can use to exchange data, or connect to other Bluetooth devices for various uses.

To exchange data, touch **Settings>Bluetooth**, your device and other available ones will show on the screen.

To turn on Bluetooth


- Touch **Settings>Bluetooth**.
- Touch  to activate/deactivate this function.

To make your phone more recognisable, you can change your phone's name which is visible to others.

- Touch **Settings>Bluetooth**.
- Touch the  icon and **Rename this device**.
- Enter a name, and touch **RENAME** to confirm.

To pair/connect your phone with a Bluetooth device

To exchange data with another device, you need to turn Bluetooth on and pair your phone with the Bluetooth device with which you want to exchange data.

- Touch **Settings>Bluetooth**.
- Touch  and **Refresh**.
- Touch a Bluetooth device you want to be paired with in the list.
- A dialog will pop up, touch **PAIR** to confirm.
- If the pairing is successful, your phone connects to the device.

⁽¹⁾ You are recommended to use Alcatel Bluetooth headsets, which have been tested and proved compatible with your phone. You can go to www.alcatel-mobile.com for more information about the alcatel Bluetooth headset.

To disconnect/unpair from a Bluetooth device

- Touch the Settings icon  beside the device you want to unpair.
- Touch **FORGET** to confirm.

6.4 Connecting to a computer

With the USB cable, you can transfer media files and other files between your internal storage and a computer.

To connect your phone to the computer

Use the USB cable that came with your phone to connect the phone to a USB port on your computer. You will receive a notification that the USB is connected.

Open the Notification panel and select **USB for file transfer**.



Before using MTP, make sure that the driver (Windows Media Player 11 or higher version) has been installed.

To locate the data you have downloaded in internal storage, touch **Downloads**. All data you have downloaded is stored in **Downloads**, where you can view media files (videos, photos, music and others), rename files, install applications into your phone, etc.

6.5 Sharing your phone's mobile data connection

You can share your phone's mobile data connection with a single computer via a USB cable (USB tethering) or with up to eight devices at once by turning your phone into a portable Wi-Fi hotspot.



The functions below may incur additional network charges from your network operator. Extra fees may also be charged in roaming areas.

To share your phone's data connection via USB

Use the USB cable that come with your phone to connect the phone to a USB port on your computer.

- Touch **Settings\More\Tethering & portable hotspot**.
- Touch the switch beside **USB tethering** to activate/deactivate this function.

To share your phone's data connection as a portable Wi-Fi hotspot

- Touch **Settings>More>Tethering & portable hotspot**.
- Touch **Portable Wi-Fi hotspot**, then touch the switch to activate/deactivate this function.

To rename or secure your portable hotspot


When a Portable Wi-Fi hotspot is activated, you can change the name of your phone's Wi-Fi network (SSID) and secure its Wi-Fi network.

- Touch **Settings>More>Tethering & portable hotspot>Set up Wi-Fi hotspot**.
- Touch **Set up Wi-Fi hotspot** to change the network SSID or set your network security.
- Touch **SAVE**.

6.6 Connecting to virtual private networks

Virtual private networks (VPNs) allow you to connect to the resources inside a secured local network from outside that network. VPNs are commonly deployed by corporations, schools, and other institutions so that their users can access local network resources when not inside that network, or when connected to a wireless network.

To add a VPN

- Touch **Settings>More>VPN** and then touch .
- In the screen that opens, follow the instructions from your network administrator to configure each component of the VPN settings.
- Touch **SAVE**.

The VPN is added to the list on the VPN settings screen.



Before adding a VPN, you should set a PIN code or password for your phone.

To connect/disconnect VPN

To connect to a VPN:


- Touch **Settings>More>VPN**.
- VPNs you have added are listed; touch the VPN you want to connect with.
- In the dialog that opens, enter any requested credentials and touch **CONNECT**.

To disconnect:


- Open the Notification panel and touch the notification for the VPN disconnection.

To edit/delete a VPN

To edit a VPN:

- Touch **Settings>More>VPN**.
- VPNs you have added are listed; touch the  icon beside the VPN you want to edit.
- After editing, touch **SAVE**.

To delete:

- Touch the  icon beside the VPN you want to delete, then touch **FORGET**.

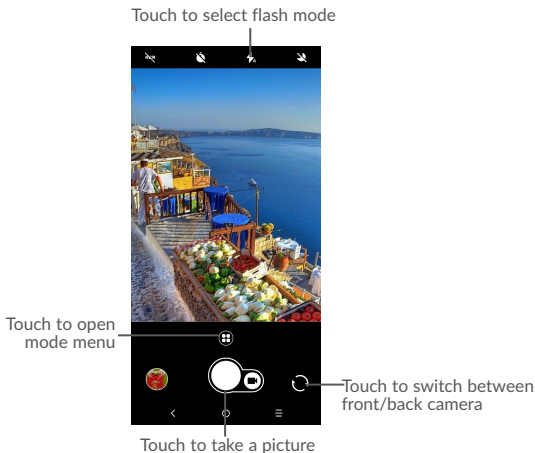
7 Multimedia applications

7.1 Camera/Camcorder


Your mobile phone is fitted with a Camera and a Camcorder for taking photos and shooting videos.

Before using the Camera or Camcorder, be sure to remove the protective lens cover to avoid it affecting your picture quality.



To take a photo or video, touch **Camera** from the Home screen.





To take a picture

The screen acts as the viewfinder. First, position the object or landscape in the viewfinder, touch the screen to focus if necessary and touch the  icon to take the picture which will be automatically saved.

To shoot a video

Switch to the video mode by touching VIDEO icon besides, position the object or landscape in the viewfinder and touch the  icon to start recording. Touch the  icon to stop recording. The video will be automatically saved.

Further operations when viewing a picture/video you have taken

- Touch the circle in the lower left part to view the photos or videos you have taken.
- Touch the  icon then Gmail, Bluetooth, MMS, etc to share the photo or video.
- Touch the  back icon to return to **Camera**.

7.1.1 Modes and settings

Back camera shooting mode



Touch to access camera settings.



Take a picture in the HDR mode.



Set the countdown before taking a photo.



Touch to turn the flash on or off or set the automatic flash mode.

• PANO

Touch to turn on panorama function. Touch the shutter button to start taking panoramic photo and move the phone towards your capture direction and make sure the white circle frame the orange circle. Once all of the gray points turn white, the photo will be automatically saved. If not all of the points turn white, touch the shutter button again to save the photo.

Settings

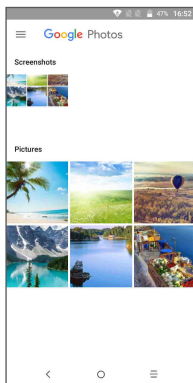
Touch  to choose different mode for Auto, Pano, Social, and enter for setting  to set under options:

- **Picture size** Touch to select picture size.
- **Video quality** Set the the quality of the video captured.
- **Grid** Set the grid mode when take picture
- **Volume button function** Use this function to enable the volume buttons to capture a photo, zoom in or out, or adjust the volume.
- **Save location information** Switch the toggle to activate/deactivate the function of tagging photos and videos with your location.
- **Shutter sound** Switch the toggle to enable/disable shutter sound when taking a photo.
- **Storage** Set the storage location in your phone or SD card.
- **One hand mode** Switch the toggle to enable/disable the function to use one hand when take a photo.
- **Reset settings** Touch and confirm to reset the camera settings.

7.2 Photos

Photos acts as a media player for you to view photos and play videos. In addition, a set of further operations to pictures and videos are available for your choice.

To view the photos you have taken, touch  from the Home screen, then touch **Photos**.




Touch to select photos for further operation.

Working with pictures

Touch a picture you want to work on, touch the  icon to delete a selected one.

Touch  to share selected ones.




Touch the  icon > Use as to set them as contact ID or wallpaper, etc.

Touch  to edit the picture.



Batch operation

The Photos provides a multi-select function, so that you can work with pictures/videos in batches.

Open the main Photo window, long press one picture, touch the  icon to move the selected files to trash. Touch  to share selected files, touch  > **Delete from device** to delete.

8 Others

8.1 Files

To manage the files in your phone, touch  from the Home screen, then touch **Files**

Files work with both external SD card and internal storage.

Files display all data stored on the phone, including applications, media files downloaded from Google Play Store, YouTube or other locations; videos, pictures or audios you have captured; other data transferred via Bluetooth, USB cable, etc.

When you download an application from PC to phone, you can locate the application using **Files**, then touch it to install it in your phone.

Files allow you to perform and is really efficient with the following common operations: create (sub) folder, open folder/file, view, rename, move, copy, delete, play, share, etc.

8.2 Other applications⁽¹⁾

The previous applications in this section are preinstalled on your phone. To read a brief introduction of the preinstalled 3rd party applications, refer to the leaflet provided with the phone. You can also download thousands of 3rd party applications by going to Google Play Store on your phone.

⁽¹⁾ Application availability depends on country and operator.

9 Google applications

Google apps are preinstalled on your phone to improve work efficiency and help you enjoy life.

This manual briefly introduces the apps. For detailed features and user guides, refer to related websites or the introduction provided in the apps.

You are recommended to register with a Google account to enjoy all the functions.

9.1 Gmail

As the Google's web-based email service, Gmail is configured when you first set up your phone. With this application, you can receive and send mails, manage mails by labels, and archive mails, etc. Mails can be automatically synchronised with your Gmail account.

9.2 Maps

Google Maps offers satellite imagery, street maps, 360° panoramic views of streets, real-time traffic conditions, and route planning for traveling by foot, car, or public transportation. By using this application, you can get your own location, search for a place, and get suggested route planning for your trips.

9.3 YouTube

YouTube is an online video-sharing application where users can upload, view, and share videos. Available content includes video clips, TV clips, music videos, and other content such as video blogging, short original videos, and educational videos. It supports a streaming function that allows you to start watching videos almost as soon as they begin downloading from the Internet.

9.4 Play Store

Serves as the official app store for the Android operating system, allowing users to browse and download applications and games. Applications are either free of charge or at a cost.

In Play Store, search for the app you need, download it and then follow the installation guide to install the app. You can also uninstall, update an app, and manage your downloads.

9.5 Drive

A file storage and synchronisation service created by Google, which allows users to store files in the cloud, share and edit files.

Files in Drive are well kept and you can reach your files from any device by logging in to your Google account. Files or folders can be shared privately with particular users having a Google account.

9.6 Play Music

A music streaming service and online music locker operated by Google.

You can upload and listen to a large number of songs for free. In addition to offering music streaming for Internet-connected devices, the Google Play Music app allows music to be stored and listened to offline. Songs purchased through the Play Music are automatically added to the user's account.

9.7 Photos

Google Photos stores and backs up your photos and videos. It also automatically analyses photos and organises them into groups, so that you can quickly locate the photos you need.

9.8 Keep

A note taking application developed by Google.

You can insert images, lists, and record voice in your notes, and set time or location-based reminders for notes. Google Keep allows you to categorise notes by labels, and notes are searchable based on their colour, whether they have reminders, audio, images, or are lists.

10 Settings

To go to Settings, touch  from the Home screen, then touch **Settings**.

10.1 Wireless & networks

10.1.1 Wi-Fi

Using Wi-Fi you can now surf the Internet without using your SIM card whenever you are in range of a wireless network. The only thing you have to do is to enter the **Wi-Fi** screen and configure an access point to connect your phone to the wireless network.

For detailed instructions on using Wi-Fi, refer to “6.1.2 Wi-Fi”.

10.1.2 Bluetooth

Bluetooth allows your phone to exchange data (videos, images, music, etc.) within a small range with another Bluetooth supported device (phone, computer, printer, headset, car kit, etc.).

For more information on Bluetooth, refer to “6.3 Connecting to Bluetooth devices”.

10.1.3 Data usage

Cellular data

If you do not need to transmit data on mobile networks, turn off **Cellular data** to avoid incurring significant charges for data use on local operator mobile networks, particularly if you do not have a mobile data agreement.

Set mobile data limit

Touch **Billing cycle** to enable **Set data limit**, your mobile data connection will be disabled when the specified limit is reached. You can also choose a data usage cycle to view the statistics and applications related to the data use of your phone.



Data usage is measured by your phone, and your operator may count differently.

10.1.4 More\Tethering & portable hotspot

This function allows you to share your phone's mobile data connection via USB or as a portable Wi-Fi access point (refer to "6.5 Sharing your phone's mobile data connection").

10.1.5 More\VPN

A mobile virtual private network (mobile VPN or mVPN) provides mobile devices with access to network resources and software applications on their home network, when they connect via other wireless or wired networks. Mobile VPNs are used in environments where workers need to keep application sessions open at all times, throughout the working day, as the user connects via various wireless networks, encounters gaps in coverage, or suspends-and-resumes their devices to preserve battery life. A conventional VPN can't survive such events because the network tunnel is disrupted, causing applications to disconnect, time out, fail, or even the computing device itself to crash.

For more information on VPN, refer to "6.6 Connecting to virtual private networks".

10.1.6 More\Cellular networks

Data roaming

If you don't need to transmit data on other operators' mobile networks, disable **Data roaming** to avoid incurring significant roaming charges.

Preferred network type

You can set your preferred network mode, such as GSM/WCDMA.

Access Point Names

You can select your preferred network with this menu.

Network carriers

You can select a network carrier.

10.2 Device

10.2.1 Gestures

The following gestures can be used for quick operations:⁽¹⁾

- **Double tap screen** Switch the toggle to enable the function that allows you to turn the screen on or off by a double tap.
- **One-handed mode** Tap the Back or recent button for 3 seconds to bring the top of the screen into reach.
- **Press power button twice for camera** Switch the toggle to quickly open camera without unlocking your screen.
- **Turn over to activate** Select to enable turning over your phone to snooze or dismiss an alarm.
- **Turn over to mute** Switch the toggle to mute ringtones of incoming calls by turning the phone over.

10.2.2 Display

In this menu, you can adjust your screen brightness, wallpaper, font size, colour temperature of your screen, etc.

Navigation bar hide

Switch the toggle to add a button tab to hide the navigation bar.

Pulse notification light

Touch to pause the notification light for charging, missed calls, unread messages, unread emails, unread Facebook messages, or unread Twitter messages.

Brightness level

Touch to set the brightness of the screen or enable the automatic brightness mode.

MiraVision™

A Set of engines to enhance display picture quality

Wallpaper

You choose the wallpaper of your screen from Gallery, Photos, or Wallpapers.

Sleep

Set your phone to enter the sleep mode after a specified period of time, such as 1 minute or 30 seconds.

Font size

Touch to set the size of the fonts displayed on your screen.

Display size

This function makes the items on your screen smaller or larger. Some apps may change position.

When device is rotated

Set your phone to rotate the screen contents or stay in portrait view when the phone is rotated.

10.2.3 Notifications

Permit or block notifications of specified apps

10.2.4 Sound

- **Sound** Set volume for media, ringtone, notifications, and alarms.
- **Increasing ring** Switch the toggle to activate or deactivate increasing ringtone when a call is coming
- **Headset mode** Mark the checkbox to enable headset mode. Ringtones will only be heard from the headset if it is plugged in.
- **Do not disturb** Touch to allow alarms, reminders, calls, etc. when Do not disturb mode is enabled.
- **SIM1 ringtone** Touch to set your ringtone for SIM1.
- **SIM2 ringtone** Touch to set your ringtone for SIM2.
- **Also vibrate for SIM1** Switch the toggle to enable vibration for incoming calls for SIM1.
- **Also vibrate for SIM2** Switch the toggle to enable vibration for incoming calls for SIM2.
- **Default notification ringtone** Touch to set the default sound for notifications.
- **Default alarm ringtone** Touch to set the default sound for alarms.
- **Power on ringtone** Touch to disable the Power on ringtone.
- **Power off ringtone** Touch to disable the Power off ringtone.
- **Other sounds** Touch to set dial pad tones, screen locking sounds, touch sounds and vibrate on touch.

10.2.5 Apps

Touch to view details about the applications installed on your phone, to manage their data usage and force them to stop.

In the **App permissions** menu of an application, you can grant permissions for the app, such as allowing the app to access your **Camera, Contacts, Location**, etc.

10.2.6 Storage & Memory

Use these settings to monitor the total and available space on your phone and touch to view the total memory and the memory used by applications.

10.2.7 Battery

Touch any category in the battery management screen to view its power consumption.

You can adjust power use via the screen brightness or screen timeout settings in the Display screen.

10.2.8 Users

This feature allows you to add another user account. When a friend need to use your phone, switch to the guest account so that information in the main account cannot be accessed.


10.2.9 Full screen mode

Touch to set the full screen mode for the apps you want to use this mode.

10.3 Personal

10.3.1 Location

On

Touch the  switch to enable the use of information from Wi-Fi and mobile networks to determine your approximate location, for use in Google Maps, when you search, and so on. When you select this option, you're asked whether you consent to share your location anonymously with Google's location service.

Mode

Touch to select High accuracy, Battery saving or Device only mode.

- **High accuracy:** Use GPS, Wi-Fi and mobile network to determine location.
- **Battery saving:** Use Wi-Fi to determine location.
- **Device only:** Use GPS to determine location.

Recent location requests

This list shows the recent location requests.

10.3.2 Security

Func

You can specify a maximum of five app shortcuts displayed on the lock screen.

Screen lock

Touch to set your screen unlock method. For example, you can unlock your phone by sliding the screen, entering a password, or drawing a pattern, etc.

Fingerprint⁽¹⁾

Touch to set your fingerprint. You can use fingerprint to unlock screen or private folder.

Smart Lock

Touch to set your device to automatically unlocked when it's safe with your such as in your pocket or near your home.

You can set the safe situation like below:

- On-body detection: Keep your device unlocked while it's on you.
- Trusted places: Add location where device should be unlocked.
- Trusted devices: Add device to keep this one unlocked when it's nearby.
- Trusted voice: Set up voice recognition

Encrypt phone

Requires a numeric PIN, pattern, or password to decrypt your phone each time you power it on.

Private mode

Touch to set the private mode that you can set private contents in this setting.

⁽¹⁾ Some models may not support the fingerprint feature.

Make passwords visible

Switch the toggle to show passwords as you type.

Device administrators

Touch to view or deactivate device administrators.

Unknown sources

Switch the toggle to permit installation of applications that you obtain from websites, emails, or other locations other than Google Play Store.

To protect your phone and personal data, download applications only from trusted sources, such as Google Play Store.

Data protection

This feature protects your data from unwanted access.

Storage type

Touch to check the hardware-backed

Trusted credentials

Touch to display trusted CA certificates

User credentials

Touch to view and modify stored credentials

Install from SD card

Touch to install encrypted certificates from internal storage or SD card.

Trusted agents

View or deactivate trust agents.

Screen pinning

When this function is enabled, you can always keep a window in view by touching the **Overview** button and then the pin icon. In this case, the user cannot go to any other window or open any other app.

To stop pinning a window in view, long press both the **Back** and **Overview** keys together, then entering your screen unlock password or drawing your unlock pattern.

Apps with usage access

Touch to display the apps which can track what apps you are using, and the using frequency. You can switch the toggle to turn on/off the permission.

10.3.3 Language & input

Use the Language & input settings to select the language for the text on your phone and for configuring the onscreen keyboard. You can also configure voice input settings and the pointer speed.

Language

Touch to select the language and the region you want.

Spell checker

Switch the toggle to enable the system to show suggested words.

Personal dictionary

Touch to open a list of the words you've added to the dictionary. Touch a word to edit or delete it. Touch the add button (+) to add a word.


Virtual keyboard

Touch to manage virtual keyboard.

Physical keyboard

Touch to set the physical keyboard.

Text-to-speech settings

- **Preferred engine:** Touch to choose a Preferred text-to-speech engine, touch the settings icon  to show more choices for each engine.
- **Speech rate:** Touch to open a dialog where you can select how quickly you want the synthesizer to speak.
- **Pitch:** Touch to set the pitch you want the synthesizer to speak.

- **Reset speech rate:** Reset the speed at which the text is spoken to normal.
- **Reset speech pitch:** Reset the pitch at which the text is spoken to default.
- **Listen to an example:** Touch to play a brief sample of the speech synthesizer, using your current settings.

Pointer speed

Touch to open a dialog where you can change the pointer speed, touch **OK** to confirm.

10.3.4 Backup & reset

Back up my data

Touch the switch to back up your phone's settings and other application data to Google servers. If you replace your phone, the settings and data you've backed up will be restored onto the new phone for the first time you sign in with your Google account. If you mark this option, a wide variety of settings and data are backed up, including your Wi-Fi passwords, bookmarks, a list of the applications you've installed, the words you've added to the dictionary used by the onscreen keyboard, and most of the settings that you configure in the Settings application. If you unmark this option, you stop backing up your settings, and any existing backups are deleted from Google servers.

Backup account

Touch to set your backup account.

Automatic restore

Touch the switch to restore your backed-up settings or other data when you reinstall an application.

Network settings reset

Touch to reset all network settings.

DRM reset

Touch to delete all DRM licenses.

Factory data reset

Erase all of your personal data from internal phone storage, including information about your Google account, any other accounts, your system and application settings, and any downloaded applications. Resetting the phone does not erase any system software updates you've downloaded.

If you reset the phone in this way, you're prompted to re-enter the same kind of information as when you first started Android.

When you are unable to power on your phone, there is another way to perform a factory data reset by using hardware keys. Press the **Volume up** key and the **Power** key at same time until the screen lights up.

10.4 System

10.4.1 Date & time

Use Date & time settings to customise your preferences for how date and time are displayed.

Automatic date & time

Touch the switch to use the network-provided date and time.

Automatic time zone

Touch the switch to use the network-provided time zone.

Set date

Touch to open a dialog where you can manually set the phone's date.

Set time

Touch to open a dialog where you can manually set the phone's time.

Select time zone

Touch to open a dialog where you can set the phone's time zone.

Use 24-hour format

Touch the switch to display the time using the 24-hour clock format.

NTP Server

Touch to choose the NTP server for each region.

10.4.2 Auto-start manager

Touch to turn on auto start which allows app to run in the background.

10.4.3 Accessibility

Use the Accessibility settings to configure any accessibility plug-ins you have installed on your phone.

Super Cleaner

Touch to activate/deactivate super cleaner. Enable super cleaner here to:

- Clean phone system cache
- Use advanced boost feature
- Kill battery draining apps
- Use quick uninstall feature

Talkback

Touch to activate/deactivatetalkback. Enable talkback to provide spoken feedback to help blind and low vision users which describes what you touch,select, and activate.

Select to speak

Tap items to hear spoken feedback:

- Tap to select to speak icon
- Next, tap an item or drag your finger across the screen to select multiple items.

Captions

Touch to activate/deactivate captions for phone screen.

Magnification gestures

Touch to turn on/off to activate/deactivate zoom in/out function by triple-tapping the screen.

Font size

Touch to set the size of the fonts displayed on your screen.

Display size

This function makes the items on your screen smaller or larger. Some apps may change position.

Click after cursor stops moving

Touch to activate/deactivate this function.

High contrast text

Touch the switch to activate high contrast text.

Power button ends call

Touch the switch to enable Power button ends call.

Auto-rotate screen

Touch the switch to activate auto-rotate screen. Content on the screen or the keyboard will be automatically rotated when you rotate your phone.

Speak passwords

Touch the switch to speak passwords while typing.

Large mouse cursor

Touch the switch to activate large mouse cursor.

Accessibility shortcut

Touch to enable/disable quick activating for accessibility features.

Text-to-speech settings

Touch to update the settings for text-to-speech output, such as the speech rate.

Touch & hold delay

Touch to adjust the duration of touch and hold delay. This function enables your phone to differ touch and touch & hold, which may avoid incorrect operations.

Colour inversion

Touch the switch to turn on/off colour inversion.

Colour correction

Touch to turn on/off colour correction.

10.4.4 Regulatory & safety

Touch to view product information.

10.4.5 Scheduled power on & off

Touch to set schedule to power on & off

10.4.6 About phone

This contains information ranging from Legal information, Model number, Firmware version, Baseband version, Kernel version, Build number to those listed below:

System updates

Touch to check for system updates.

Status

This contains the status of the Battery status, Battery level, My phone number, Network, Signal strength, etc.

Upgrade

You can use the Mobile Upgrade tool or FOTA Upgrade tool to update your phone's software.

11.4.1 Mobile Upgrade




Download Mobile Upgrade from alcatel website (www.alcatel-mobile.com) and install it on your PC. Launch the tool and update your phone by following the step by step instructions (refer to the User Guide provided together with the tool). Your phone's software will now have the latest software.



All personal information will be permanently lost following the update process. We recommend you back up your personal data using Smart Suite before upgrading.

11.4.2 FOTA Upgrade

Use the FOTA (Firmware Over The Air) Upgrade tool to update your phone's software. To access **Updates**, touch the Application tab from the Home screen, then select **Updates** or touch **Settings>About phone>System updates**.

Touch  and the phone will search for the latest software. If you want to update the system, touch the  button, and when that's finished, touch  to complete the upgrade. Now your phone will have the latest version of the software. You should turn on data connection or Wi-Fi before searching for updates. Settings for auto-check frequency are also available once you restart the phone. If you have chosen auto-check, when the system discovers the new version, a dialog will pop up to choose download or ignore, the notification will also appear in status bar.

During FOTA downloading or updating, to avoid errors in locating the correct update packages, do not change your default storage location.

12 Accessories

The latest generation of Alcatel mobile phones offers a built-in handsfree feature that allows you to use the telephone from a distance, placed on a table for example. For those who prefer to keep their conversations confidential, an earpiece is also available known as the headset.

1. Charger
2. USB cable
3. Stereo headset



Only use the Alcatel chargers and accessories included along with your device.

13 Warranty

Your phone is warranted against any defect or malfunctioning which may occur in conditions of normal use during the warranty period of twelve (12) months from the date of purchase as shown on your original invoice.

Batteries and accessories sold with your phone are also warranted against any defect which may occur during the first six (6) months(1) from the date of purchase as shown on your original invoice.

In case of any defect of your phone which prevents you from normal use thereof, you must immediately inform your vendor and present your phone with your proof of purchase.

If the defect is confirmed, your phone or part thereof will be either replaced or repaired, as appropriate. Repaired phone and accessories are entitled to a one (1) month warranty for the same defect. Repair or replacement may be carried out using reconditioned components offering equivalent functionality.

This warranty covers the cost of parts and labor but excludes any other costs.

This warranty shall not apply to defects to your phone and/or accessory due to (without any limitation):

- Non-compliance with the instructions for use or installation, or with technical and safety standards applicable in the geographical area where your phone is used;
- Connection to any equipment not supplied or not recommended by TCL Communication Ltd.;
- Modification or repair performed by individuals not authorised by TCL Communication Ltd. or its affiliates or your vendor;
- Modification, adjustment or alteration of software or hardware performed by individuals not authorised by TCL Communication Ltd.;
- Inclement weather, lightning, fire, humidity, infiltration of liquids or foods, chemical products, download of files, crash, high voltage, corrosion, oxidation...

Your phone will not be repaired in case labels or serial numbers (IMEI) have been removed or altered.

There are no express warranties, whether written, oral or implied, other than this

printed limited warranty or the mandatory warranty provided by your country or jurisdiction.

In no event shall TCL Communication Ltd. or any of its affiliates be liable for indirect, incidental or consequential damages of any nature whatsoever, including but not limited to commercial or financial loss or damage, loss of data or loss of image to the full extent those damages can be disclaimed by law.

Some countries/states do not allow the exclusion or limitation of indirect, incidental or consequential damages, or limitation of the duration of implied warranties, so the preceding limitations or exclusions may not apply to you.

4 Troubleshooting

Before contacting the service center, here are some instructions to help you troubleshoot your device:

- To have optimal operation, fully charge the battery.
- To improve the phone's performance, remove unnecessary files or apps on your phone.
- To update your system software, use the System Updates command in your phone's settings.
- To set your phone to factory default, use the Backup & Reset in the phone's settings. All your phone data will be lost permanently. It is strongly advised to fully back up your phone before resetting.

My phone can't be switched on

- When the phone can't be switched on, charge for at least 20 minutes to ensure the minimum battery power needed. Then switch it on again.

My phone has not responded for several minutes

- If your phone doesn't respond, turn off your phone by pressing and holding the Power key until it turns off and then restart it again.
- If your phone has a removable battery, remove the battery and reinsert it, then restart the phone.

My phone turns off by itself

- When your phone turns off by itself, make sure that the Power key is not accidentally pressed.
- Check the battery charge level.
- Check your phone's settings for turning off the phone at a certain time.
- If it still doesn't work, Factory reset the phone via the Backup & reset in the phone's Settings. Make sure you have backed up your data.

My phone can't charge properly

- Make sure that you are using the proper charger that comes with the phone.
- If your phone has a removable battery, make sure that your battery is inserted properly and the battery terminal makes a good contact with the phone. It must be inserted before plugging in the charger.
- Make sure that your battery is not completely discharged; if the battery power has been discharged for a long time, it may take around 20 minutes to display the battery charging indicator on the screen.

- Make sure that charging is carried out under normal conditions (0°C (32°F) to 40°C (104°F)).
- When abroad, check that the voltage input is compatible.
- Check that the charging port is secured or it's not damaged.

My phone can't connect to a network or "No service" is displayed

- Try connecting to the network by moving to another physical location.
- Verify the network coverage with your carrier in your current area.
- Check with your carrier that your SIM card is valid.
- Make sure your phone's setting is not in airplane mode.
- If you are away from your carrier's network, you may need to enable roaming in the phone's settings to connect to other network. Roaming charges may apply.

My phone can't connect to the internet

- Make sure that Cellular Data internet service is available in your wireless service plan.
- Check your phone's settings. Make sure Cellular Data is enabled or Wi-Fi connected.
- Make sure that you are in a place with network coverage for cellular data or Wi-Fi internet connection.
- Try connecting at a later time or another location.

Invalid SIM card

- Make sure that the SIM card has been correctly inserted (see "Inserting or removing the SIM card").
- Make sure that the chip on your SIM card is not damaged.
- Make sure that the service of your SIM card matches the network you're on.

My phone can't make outgoing calls

- Make sure that you have dialed a valid number and have touched Call on your phone.
- For international calls, check the country and area codes.
- Make sure that your phone is connected to a network, and the network is not overloaded or unavailable.
- Check your subscription status with your carrier.
- Make sure that you have not barred outgoing calls.
- Make sure that your phone is not in airplane mode.

My phone can't receive incoming calls

- Make sure that your phone is switched on and connected to a network. Check for overloaded or unavailable network.
- Check your subscription status with your carrier.

- Make sure that you have not forwarded incoming calls.
- Make sure that you have not barred certain calls.
- Make sure that your phone is not in airplane mode.

The caller's name/number doesn't appear when a call is received

- Check that you have subscribed Caller ID service with your carrier.
- Your caller may have concealed his name or number.

I can't find my contacts

- Make sure that your SIM card is not broken.
- Make sure that your SIM card is inserted properly.
- Import all contacts stored in SIM card to phone.

The sound quality of the calls is poor

- Adjust the volume during a call by pressing the Volume up/down key.
- Check the network strength. Move to a location with stronger signal strength.
- Make sure that the receiver, connector or speaker on your phone is clean.

I can't use the features described in the manual

- Check with your carrier to make sure that your subscription includes this service.
- Make sure that this feature doesn't require any additional accessory.

When I select a number from my contacts, the number can't be dialed

- Make sure that you have correctly recorded the number in your file.
- Make sure that you have selected the country code when calling an international number.

I can't add a contact

- Make sure that your SIM card contact list is not full; delete some files or save the files to the phone.

My callers can't leave messages on my voicemail

- Contact your network carrier to check service availability.
- Set up your voicemail with your carrier, so that your caller can leave a message.

I can't access my voicemail

- Make sure that your carrier's voicemail number is correctly entered in "Voicemail number".
- Try later if the network is busy.

I can't send and receive MMS

- Check your phone memory as it might be full.

- Contact your network carrier to check service availability and MMS parameters.
- Verify the server center number or your MMS profile with your carrier.
- The server center may be swamped. Try again later.
- Start a new Messaging string. Your messaging string may have reached its limit.

SIM card PIN locked

- Contact your network carrier to obtain the PUK (Personal Unblocking Key) code.

I can't connect my phone to my computer

- Install Smart Suite.
- Check that your USB driver is installed properly.
- Open the Notification panel to check if the Smart Suite Agent has been activated.
- Check that you have marked the USB debugging checkbox.
- Check that your computer meets the requirements for Smart Suite installation.
- Make sure that you're using the right cable from the box.

I can't download new files

- Make sure that there is sufficient phone storage space for your download.
- Select the microSD card as the location to store downloaded files.
- Check your subscription status with your carrier.

The phone can't be detected by others via Bluetooth

- Make sure that Bluetooth is turned on and your phone is visible to other users.
- Make sure that the two phones are within Bluetooth's detection range.

The battery drains too fast

- Make sure that you follow the complete charge time (minimum 135 minutes).
- After a partial charge, the battery level indicator may not be exact. Wait for at least 20 minutes after removing the charger to obtain an exact indication.
- Adjust the brightness of screen as appropriate.
- Extend the email auto-check interval for as long as possible.
- Update news and weather information on manual demand, or increase their auto-check interval.
- Exit background-running applications if they are not being used for extended periods of time.
- Deactivate Bluetooth, Wi-Fi, or GPS when not in use.

The phone becomes warm following prolonged calls, game playing, internet surfing or running other complex applications

- This heating is a normal consequence of the CPU handling excessive data. Ending the above actions will make your phone return to normal temperature.

After Factory data reset is performed, I can't use my phone without entering Google account credentials

- After reset is performed, you must enter the original Google account credentials that were used on this phone.
- If you don't remember your Google account credentials, complete Google account recovery procedures.
- If you still cannot access your phone, apply to the authorized repair center, but remember that it will not be regarded as warranty case.

The phone doesn't ring when a call or message arrives

- Make sure that Do Not Disturb mode (go to Settings > Sound & notification > Do Not Disturb) is not activated.
- Press the Volume up/down key to adjust volume.

I forget some passwords/codes/keys on phone

- Perform Factory data reset.
- If you still cannot access your phone, apply to the authorized repair center, but remember that it will not be regarded as warranty case.

15 Specifications

Processor	MT8321
Platform	Android N 7.0
Memory	16GB ROM+1G RAM
Dimensions (LxWxT)	161*76*7.9mm
Weight	169g
Display	6 inch 1440*720 LTPS-IPS
Network	GSM: B2/3/5/8 3G: B1/2/5/8 (Band frequency and data speed are operator dependent.)
GPS	A-GPS
Connectivity	<ul style="list-style-type: none">• Bluetooth V4.2• Wi-Fi 2.4 GHz• 3.5 mm audio jack• micro-USB
Camera	<ul style="list-style-type: none">• 8M AF (13M by SW interpolation)• 5M FF(8M by SW interpolation)• 8M AF +5M FF
Audio supported formats	AAC LC, HE-AACv1, HE-AACv2, AAC ELD, AMR-NB, AMR-WB, FLAC, MP3, MIDI, Vorbis, PCM/WAVE, Opus

Video supported formats	H.263, H.264 AVC, H.265 HEVC, MPEG-4 SP, VP8, VP9
Battery ⁽¹⁾	<ul style="list-style-type: none"> • Rechargeable Lithium-ion battery • Capacity: 3000 mAh
Expansion Slot	microSD™ memory card (Availability of microSD card depends on market)
Special Features	<ul style="list-style-type: none"> • GPS • G-sensor • Light Sensor • Proximity Sensor

Note: Specifications are subject to change without prior notice. ⁽¹⁾

⁽¹⁾ The original battery has undergone rigorous safety inspections to meet qualification standards, the use of non-original batteries may be dangerous.