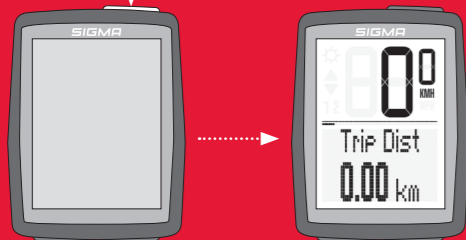
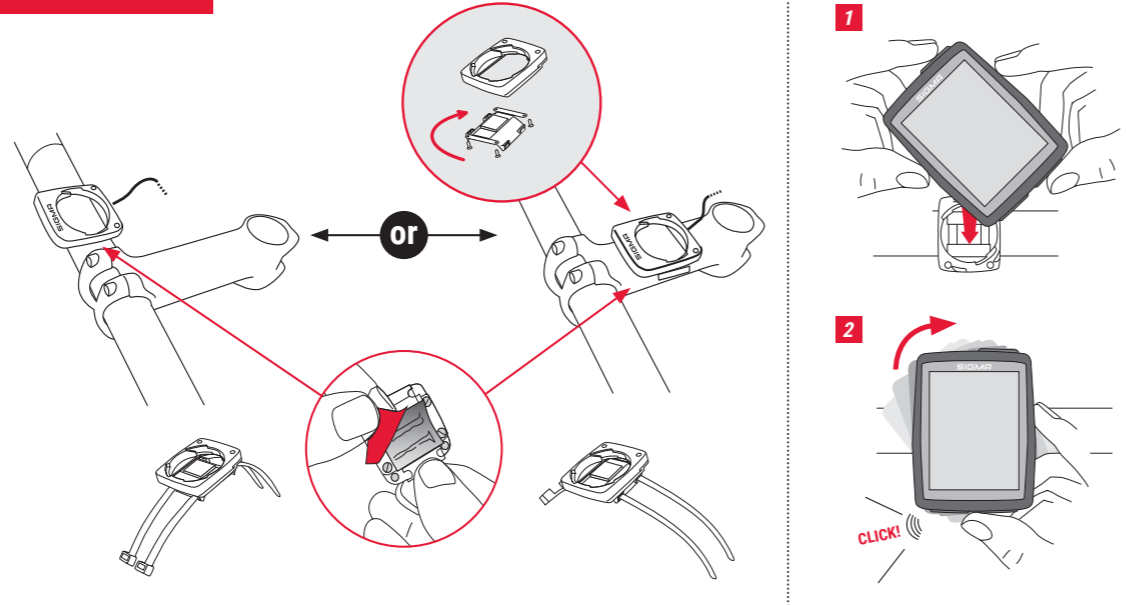
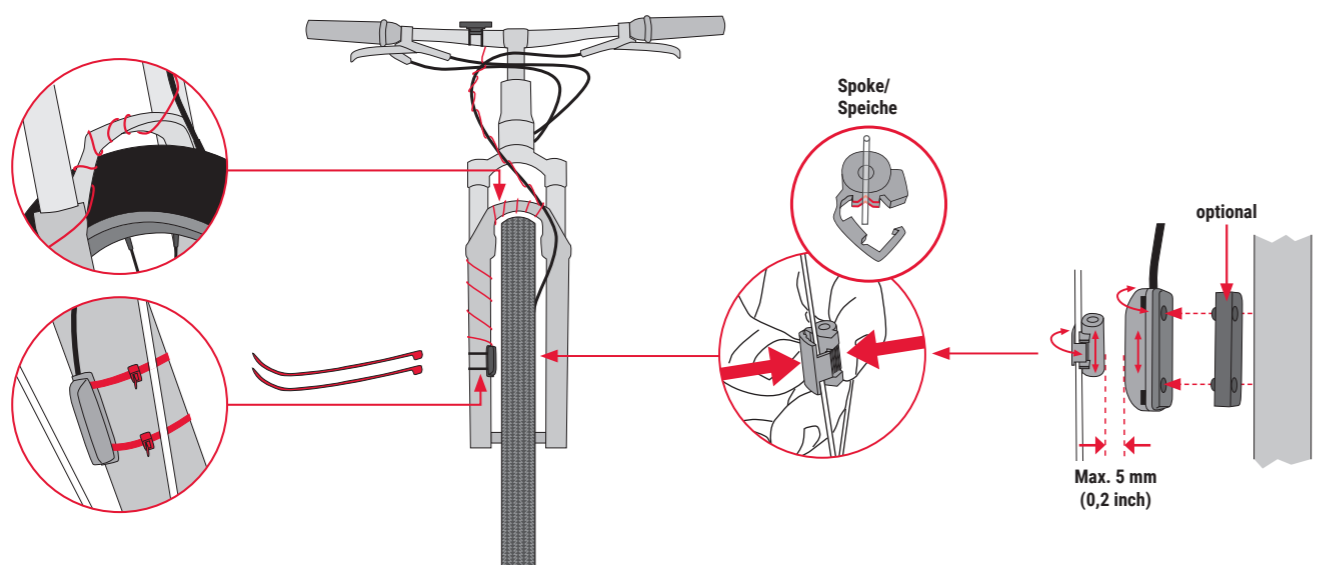



 VIDEOS &
 FURTHER
 INFORMATION

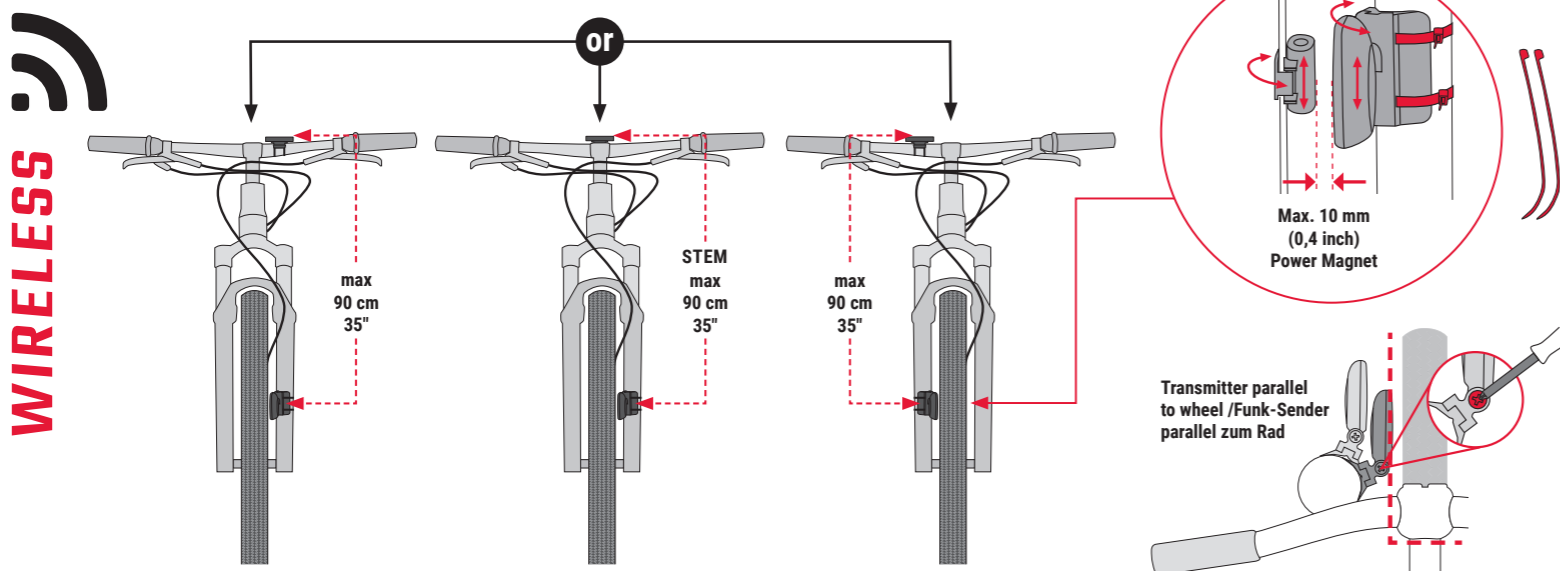
www.sigmasport.com
FIRST START

Press 5 sec.

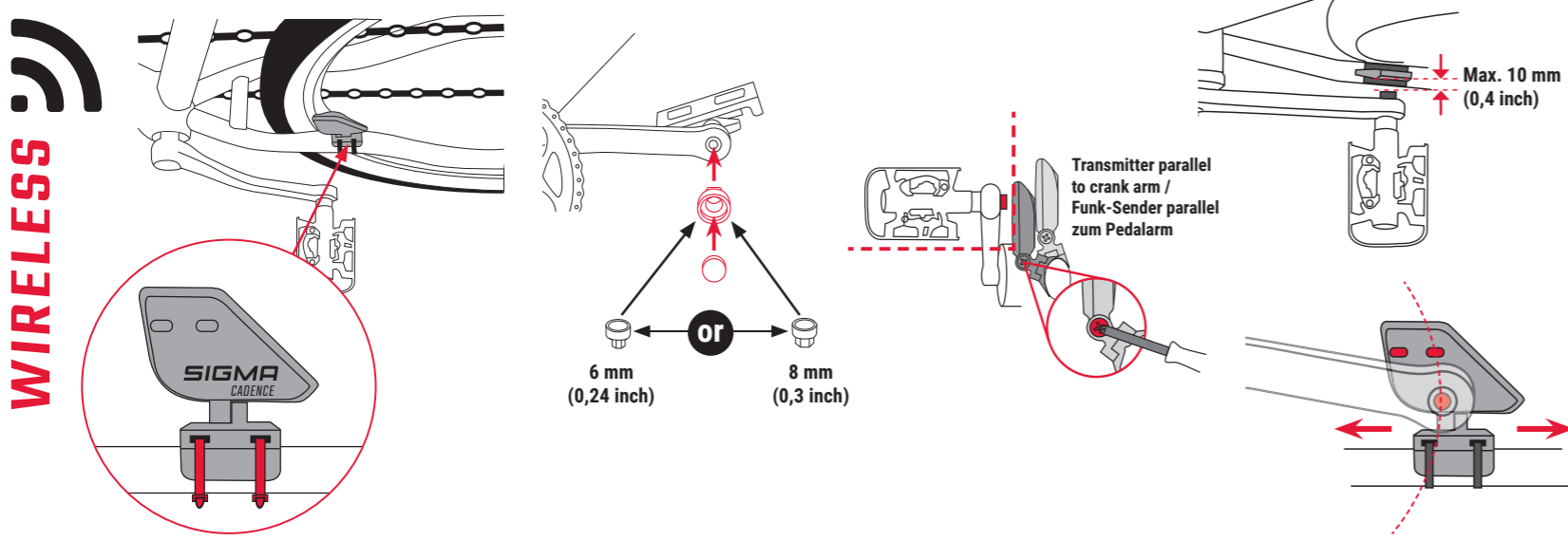

 Battery already installed / Batterie bereits eingebaut /
 Pile déjà installée / Batteria già installata /
 Bateria ya instalada / Bateria já instalada /
 Batterij reeds geïnstalleerd / Bateria już zainstalowana /
 Bateria je již nainstalována

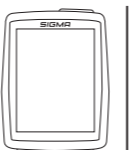
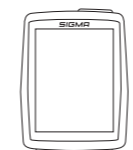
INSTALLATION MOUNT

INSTALLATION WIRED SPEED SENSOR
WIRED

INSTALLATION WIRELESS SPEED TRANSMITTER

Emission frequency: 112 kHz, Max power < 11.37 dBm


WIRELESS
INSTALLATION WIRELESS CADENCE TRANSMITTER

Emission frequency: 112 kHz, Max power < 11.37 dBm


INSTALLATION
CONTENTS
BC 14.0 wired
1 + 2 + 3

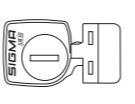
BC 14.0 wireless
3 + 4 + 5 + 6

BC 14.0 WL CAD
3 + 4 + 5 + 6 + 7 + 8


BC 14.0

BC 14.0 WL

BC 14.0 WL

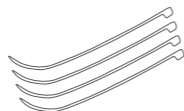
1 Cable mount
 Art.-Nr. 00531

4 Speed transmitter
 Art.-Nr. 00541

7 Cadence transmitter
 Art.-Nr. 00542

2 Magnet
 Art.-Nr. 00537

5 Mount
 Art.-Nr. 00535

8 Cadence magnet
 Art.-Nr. 00539

3 Cable ties

6 Power Magnet
 Art.-Nr. 00538

TECHNICAL DATA
EN Computer WIRED:
 - Battery type: CR 2450, 3V
 - Battery life: 3 to 4 years
 (When used for 1 hour per day)

Computer WIRELESS:
 - Battery type: CR 2450, 3V
 - Battery life: 2 years
 (When used for 1 hour per day)
Transmitter:
 - Battery type: CR 2032, 3V
 - Battery life: 1.5 years
 (When used for 1 hour per day)

DE Computer KABELGEBUNDEN:
 - Batterietyp: CR 2450, 3V
 - Batterielebensdauer: 3 bis 4 Jahre
 (Bei einer Benutzung von 1 Stunde pro Tag)

Computer KABELLOS:
 - Batterietyp: CR 2450, 3V
 - Batterielebensdauer: 2 Jahre
 (Bei einer Benutzung von 1 Stunde pro Tag)
Sender:
 - Batterietyp: CR 2032, 3V
 - Batterielebensdauer: 1,5 Jahre
 (Bei einer Benutzung von 1 Stunde pro Tag)

FR Compteur AVEC FIL :
 - Type de pile : CR 2450, 3V
 - Autonomie : 3 à 4 ans
 (1 heure d'utilisation par jour)

Compteur SANS FIL :
 - Type de pile : CR 2450, 3V
 - Autonomie : 2 ans
 (1 heure d'utilisation par jour)
Emetteur :
 - Type de pile : CR 2032, 3V
 - Autonomie : 1,5 an
 (1 heure d'utilisation par jour)

IT Computer DOTATO DI CAVI:
 - Tipo di batteria: CR 2450, 3V
 - Durata della batteria: da 3 a 4 anni
 (a fronte di un utilizzo di 1 ora al giorno)

Computer SENZA CAVI:
 - Tipo di batteria: CR 2450, 3V
 - Durata della batteria: 2 anni
 (a fronte di un utilizzo di 1 ora al giorno)
Sensore:
 - Tipo di batteria: CR 2032, 3V
 - Durata della batteria: 1 anno e mezzo
 (a fronte di un utilizzo di 1 ora al giorno)

ES Ordenador CON CABLE:
 - Tipo de batería: CR 2450, 3V
 - Duración de la batería: 3 a 4 años
 (Con un uso de 1 hora diaria)

Ordenador INALÁMBRICO:
 - Tipo de batería: CR 2450, 3V
 - Duración de la batería: 2 años
 (Con un uso de 1 hora diaria)
Transmisor:
 - Tipo de batería: CR 2032, 3V
 - Duración de la batería: 1,5 año
 (Con un uso de 1 hora diaria)

PT Computador COM FIOS:
 - Tipo de pilha: CR 2450, 3V
 - Vida útil da pilha: entre 3 e 4 anos
 (numa utilização de 1 hora por dia)

Computador SEM FIOS:
 - Tipo de pilha: CR 2450, 3V
 - Vida útil da pilha: 2 anos
 (numa utilização de 1 hora por dia)
Transmissor:
 - Tipo de pilha: CR 2032, 3V
 - Vida útil da pilha: 1,5 anos
 (numa utilização de 1 hora por dia)

NL Computer MET KABEL:
 - Batterijtype: CR 2450, 3V
 - Batterijduur: 3-4 jaar
 (Bij gebruik van 1 uur per dag)

Computer ZONDER KABEL:
 - Batterijtype: CR 2450, 3V
 - Batterijduur: 2 jaar
 (Bij gebruik van 1 uur per dag)
Zender:
 - Batterijtype: CR 2032, 3V
 - Batterijduur: 1,5 jaar
 (Bij gebruik van 1 uur per dag)

PL Komputer PRZEWODOWY:
 - Typ baterii: CR 2450, 3 V
 - Żywotność baterii: 3 do 4 lat
 (przy użytkowaniu przez 1 godzinę dziennie)

Komputer BEZPRZEWODOWY:
 - Typ baterii: CR 2450, 3 V
 - Żywotność baterii: 2 lat
 (przy użytkowaniu przez 1 godzinę dziennie)
Nadajnik:
 - Typ baterii: CR 2032, 3 V
 - Żywotność baterii: 1,5 roku
 (przy użytkowaniu przez 1 godzinę dziennie)

CZ Computer S KABELOVÝM PŘIPOJENÍM:
 - Typ baterie: CR 2450, 3V
 - Životnost baterie: 3 až 4 roky
 (při používání 1 hodinu denně)

BEZDRÁTOVÝ computer:
 - Typ baterie: CR 2450, 3V
 - Životnost baterie: 2 roky
 (při používání 1 hodinu denně)
Vysílač:
 - Typ baterie: CR 2032, 3V
 - Životnost baterie: 1,5 roku
 (při používání 1 hodinu denně)

EU-DECLARATION OF CONFORMITY

 We, SIGMA-ELEKTRO GmbH, Dr.-Julius-Leber-Str. 15, D-67433 Neustadt/Weinstraße declare under our responsibility that the product BC 14.0 WR are compliant with the essential requirements of the EMC Directive 2014/30/EU and the RoHS Directive 2011/65/EU. The declaration of conformity can be found at: ce.sigmasport.com/bc140wr

 We, SIGMA-ELEKTRO GmbH, Dr.-Julius-Leber-Str. 15, D-67433 Neustadt/Weinstraße declare under our responsibility that the product BC 14.0 WL and the transmitters STS-S-3 and STS-C-3 are compliant with the essential requirements and other relevant requirements of the RED Directive 2014/53/EU and the RoHS Directive 2011/65/EU. The declaration of conformity can be found at: ce.sigmasport.com/bc140wl
EU-KONFORMITÄTSERKLÄRUNG

 Wir, SIGMA-ELEKTRO GmbH, Dr.-Julius-Leber-Str. 15, D-67433 Neustadt/Weinstraße, erklären, dass der Fahrradcomputer BC 14.0 WR bei bestimmungsgemäßer Verwendung den grundlegenden Anforderungen gemäß der EMC Directive 2014/30/EU und der RoHS Directive 2011/65/EU entspricht. Sie finden die Konformitäts-Erklärung unter folgendem Link: ce.sigmasport.com/bc140wr

 Wir, SIGMA-ELEKTRO GmbH, Dr. Julius Leber Str. 15, D-67433 Neustadt/Weinstraße erklären, dass der Fahrradcomputer mit Funkübertragung BC 14.0 WL und die Sender STS-S-3 und STS-C-3 bei bestimmungsgemäßer Verwendung den grundlegenden Anforderungen gemäß RED Directive 2014/53/EU und der RoHS Directive 2011/65/EU entsprechen. Sie finden die Konformitäts-Erklärung unter folgendem Link: ce.sigmasport.com/bc140wl
CE INFORMATION
EN You can find the CE declaration at: ce.sigmasport.com/bc140wr
DE Sie finden die Konformitäts-Erklärung unter folgendem Link: ce.sigmasport.com/bc140wr
FR Vous trouverez la déclaration CE à l'adresse: ce.sigmasport.com/bc140wr
IT La dichiarazione CE è disponibile all'indirizzo: ce.sigmasport.com/bc140wr
ES Puede encontrar la declaración de conformidad CE en: ce.sigmasport.com/bc140wr
PT Poderá encontrar a declaração CE em: ce.sigmasport.com/bc140wr
NL U kunt de CE-certificering vinden op: ce.sigmasport.com/bc140wr
PL Deklaracja CE znajduje się na stronie: ce.sigmasport.com/bc140wr
CZ ES prohlášení najdete na adrese: ce.sigmasport.com/bc140wr
LEGAL STATEMENTS
FEDERAL COMMUNICATION COMMISSION INTERFERENCE STATEMENT

Caution: If any changes or modifications not expressly approved by the party responsible for compliance could void the user's authority to operate the equipment.

This device complies with Part 15 of the FCC Rules. Operation is subject to the following two conditions: (1) This device may not cause harmful interference, and (2) This device must accept any interference received, including interference that may cause undesired operation.

The grantee is not responsible for any changes or modifications not expressly approved by the party responsible for compliance. Such modifications could void the user's authority to operate the equipment.

The RF Exposure Compliance distance is 5 millimeters.

NOTE: This equipment has been tested and found to comply with the limits for a Class B digital device, pursuant to part 15 of the FCC Rules. These limits are designed to provide reasonable protection against harmful interference in a residential installation. This equipment generates, uses and can radiate radio frequency energy and, if not installed and used in accordance with the instructions, may cause harmful interference to radio communications. However, there is no guarantee that interference will not occur in a particular installation. If this equipment does cause harmful interference to radio or television reception, which can be determined by turning the equipment off and on, the user is encouraged to try to correct the interference by one or more of the following measures:

- Reorient or relocate the receiving antenna.
- Increase the separation between the equipment and receiver.
- Connect the equipment into an outlet on a circuit different from that to which the receiver is connected.
- Consult the dealer or an experienced radio/TV technician for help.

FCC ID STS-S-3: M5LSPD3STS

FCC ID STS-C-3: M5LCAD3STS

INDUSTRY CANADA STATEMENT

This device complies with Innovation, Science and Economic Development Canada licence-exempt RSS standard(s). Operation is subject to the following two conditions: (1) this device must not cause interference, and (2) this device must accept any interference, including interference that may cause undesired operation of the device. CAN ICES-3(B)/NMB-3(B)

Le présent appareil est conforme aux CNR Innovation, Sciences et Développement économique Canada applicables aux appareils radio exempts de licence. L'exploitation est autorisée aux deux conditions suivantes: (1) il ne doit pas produire de brouillage et (2) l'utilisateur du dispositif doit être prêt à accepter tout brouillage radioélectrique reçu, même si ce brouillage est susceptible de compromettre le fonctionnement du dispositif. CAN ICES-3(B)/NMB-3(B)

The device meets the exemption from the routine evaluation limits in section 2.5 of RSS 102 and compliance with RSS-102 RF exposure, users can obtain Canadian information on RF exposure and compliance.

Le dispositif rencontre l'exemption des limites courantes d'évaluation dans la section 2.5 de RSS 102 et la conformité à l'exposition de RSS-102 rf, utilisateurs peut obtenir l'information canadienne sur l'exposition et la conformité de rf.

This transmitter must not be co-located or operating in conjunction with any other antenna or transmitter. This equipment should be installed and operated with a minimum distance of 5 millimeters between the radiator and your body.

Cet émetteur ne doit pas être Co-placé ou ne fonctionnant en même temps qu'aucune autre antenne ou émetteur. Cet équipement devrait être installé et actionné avec une distance minimum de 5 millimètres entre le radiateur et votre corps.

UKCA STATEMENT
Wireless Model
 We, SIGMA-ELEKTRO GmbH, declare that the equipment above has been tested in our facility and found compliance with the requirement limits of applicable standards, in accordance with the Radio Equipment Regulations 2017 and the Restriction of the Use of Certain Hazardous Substances in Electrical and Electronic Equipment Regulations 2012. The test record, data evaluation and Equipment Under Test (EUT) configurations represented herein are true and accurate under the standards herein specified.

Wired Model
 We, SIGMA-ELEKTRO GmbH, declare that the equipment above has been tested in our facility and found compliance with the requirement limits of applicable standards, in accordance with the Electromagnetic Compatibility Regulations 2016 and the Restriction of the Use of Certain Hazardous Substances in Electrical and Electronic Equipment Regulations 2012. The test record, data evaluation and Equipment Under Test (EUT) configurations represented herein are true and accurate under the standards herein specified.

SIGMA-ELEKTRO GmbH
 Dr.-Julius-Leber-Straße 15
 67433 Neustadt/Weinstraße, Germany
kundenservice@sigmasport.com


Obsah je uzamčen

Dokončete, prosím, proces objednávky.

Následně budete mít přístup k celému dokumentu.



Proč je dokument uzamčen? Nahněvat Vás rozhodně nechceme. Jsou k tomu dva hlavní důvody:

- 1) Vytvořit a udržovat obsáhlou databázi návodů stojí nejen spoustu úsilí a času, ale i finanční prostředky. Dělali byste to Vy zadarmo? Ne*. Zakoupením této služby obdržíte úplný návod a podpoříte provoz a rozvoj našich stránek. Třeba se Vám to bude ještě někdy hodit.

**) Možná zpočátku ano. Ale vězte, že dotovat to dlouhodobě nelze. A rozhodně na tom nezbohatneme.*

- 2) Pak jsou tady „roboti“, kteří se přiživují na naší práci a „vysávají“ výsledky našeho úsilí pro svůj prospěch. Tímto krokem se jim to snažíme překazit.

A pokud nemáte zájem, respektujeme to. Urgujte svého prodejce. A když neuspějete, rádi Vás uvidíme!