

Bestway®

EN

FR

DE

IT

NL

ES

DA

PT

EL

RU

CS

NO

SV

FI

SK

PL

HU

LV

LT

SL

TR

RO

BG

HR

ET

SR

AR

58665

www.bestwaycorp.com

OPERATING WARNING

IMPORTANT SAFETY INSTRUCTIONS
 READ AND FOLLOW ALL INSTRUCTIONS.

WARNING: To reduce the risk of injury, do not permit children to use this product.

WARNING: Assembly and disassembly of this product should only be performed by adult.

WARNING: Do not remove or obstruct the float opening while the filter pump/sand filter is operating.

WARNING: Keep hands and hair away from the Pool Vacuum while the filter pump/sand filter is operating.

WARNING: Do not use the filter pump/sand filter while the pool is occupied.

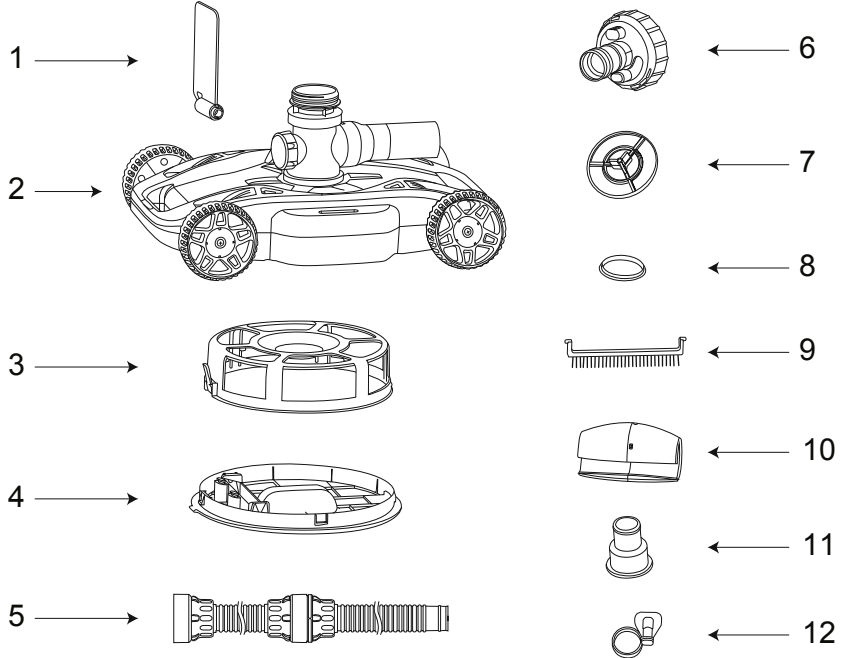
WARNING: Ensure the filter pump/sand filter is unplugged before any maintenance begins or severe risk of injury or death exists.

NOTE: Remove the product from the pool before placing a cover over the pool.

NOTE: Drawings for illustration purpose only. May not reflect actual product. Not to scale.

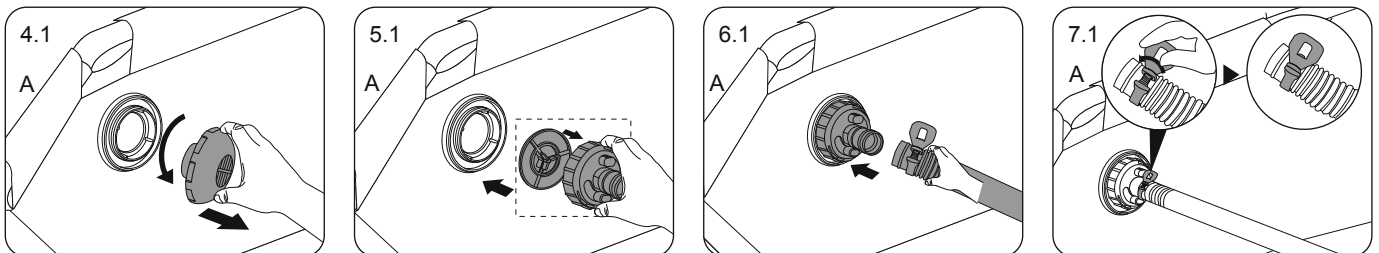
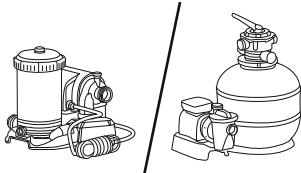
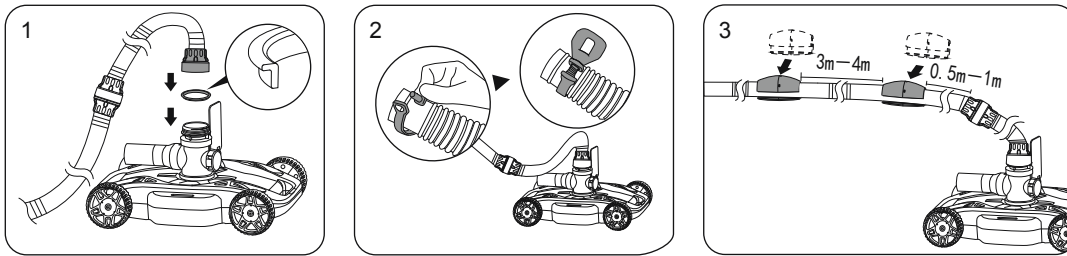
PART LIST

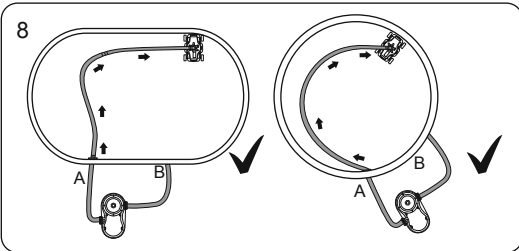
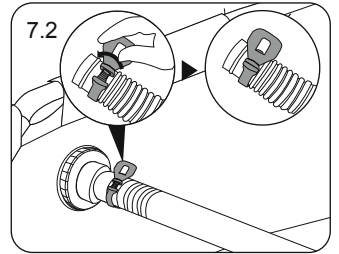
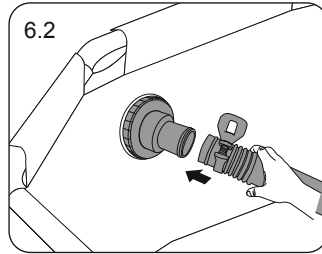
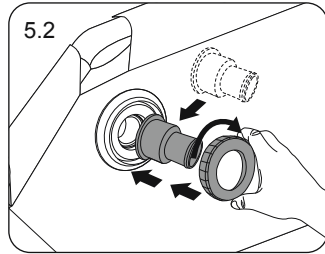
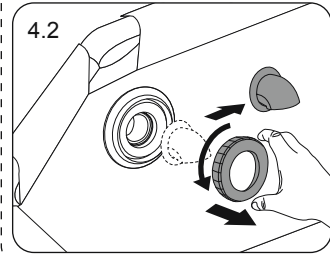
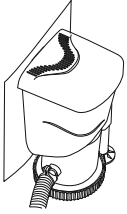
ITEM	NAME	QTY
1	Flap	1
2	Main Body	1
3	Debris Compartment	1
4	Bottom Cover	1
5	Hose	1
6	Pressure Relief Valve	1
7	Pressure Relief Valve Filter	1
8	Seal	1
9	Brush	1
10	Float	2
11	Hose Adapter	1
12	Hose Clamp	1



Applicable Pump: 1,500-3,200 gal./h Filter Pump or Sand Filter
Applicable Pool: 22 ft. (6.7 m) and below Above Ground Pool

INSTALLATION



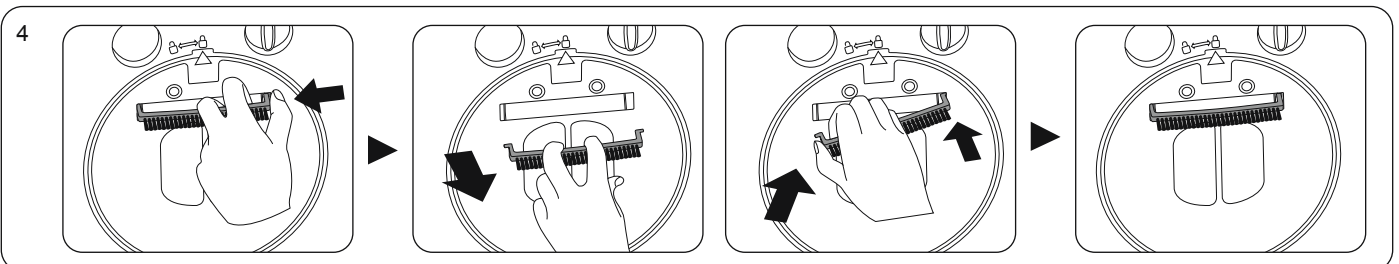
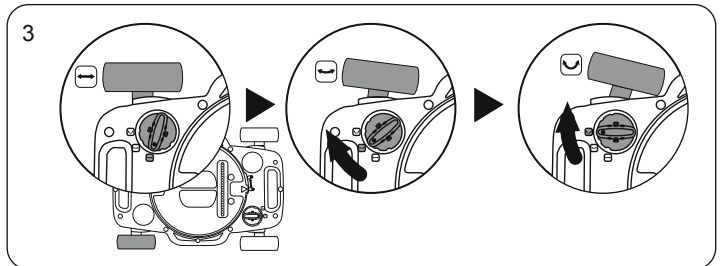
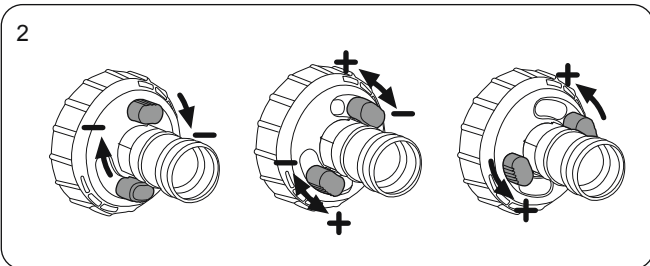
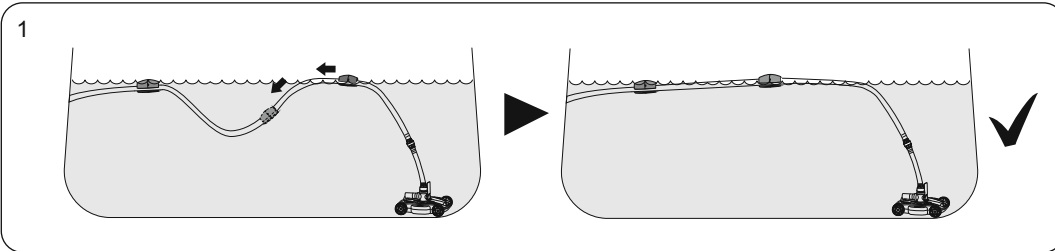


HOW TO USE THE PRODUCT

If the following situations occur during operation, please operate as shown to keep the robot in the best working condition.

1. During operation, if the hose sinks below the water surface, please adjust the position of the float.
2. When adapting to a high-flow pump, if the following situations occur, please refer to the operation diagram, and adjust the pressure relief valve knob to appropriately reduce the running speed of the cleaner:
 - 2.1. After the hoses are straightened out, serious hose entanglement occurred in continuous long-term operation;
 - 2.2. The robot runs too fast, the wheels tip over or the wheels do not move along the bottom of the pool.
3. When the robot runs for a long time, if the running track does not cover most of the pool area, or the running track is repeated. Please adjust the wheel angle knob appropriately.
4. When adapting to 1500 gal. filter pump, please remove the brush.

NOTE: It is normal for the robot to leak water at the water pipe joints during the water supply process.



Obsah je uzamčen

Dokončete, prosím, proces objednávky.

Následně budete mít přístup k celému dokumentu.



Proč je dokument uzamčen? Nahněvat Vás rozhodně nechceme. Jsou k tomu dva hlavní důvody:

1) Vytvořit a udržovat obsáhlou databázi návodů stojí nejen spoustu úsilí a času, ale i finanční prostředky. Dělali byste to Vy zadarmo? Ne*. Zakoupením této služby obdržíte úplný návod a podpoříte provoz a rozvoj našich stránek. Třeba se Vám to bude ještě někdy hodit.

**) Možná zpočátku ano. Ale vězte, že dotovat to dlouhodobě nelze. A rozhodně na tom nezbohatneme.*

2) Pak jsou tady „roboti“, kteří se přiživují na naší práci a „vysávají“ výsledky našeho úsilí pro svůj prospěch. Tímto krokem se jim to snažíme překazit.

A pokud nemáte zájem, respektujeme to. Urgujte svého prodejce. A když neuspějete, rádi Vás uvidíme!