

# Canon

## PIXMA G1410 series

Ξεκινώντας  
Příručka pro uvedení  
do provozu  
Prvé spustenie  
Pierwsze  
uruchomienie  
Beüzemelési  
útmutató  
Başlangıç Kılavuzu  
Ghid de inițiere  
РЪКОВОДСТВО ЗА  
начално запознаване  
Navodila za postavitev  
in začetek uporabe  
Početak

Διαβάστε πρώτα τις **Πληροφορίες για την ασφάλεια και σημαντικές πληροφορίες** (συμπλήρωμα).

Nejprve si přečtete **Informace o bezpečnosti a důležitá sdělení** (dodatek).

Najprv si prečítajte **Informácie o bezpečnosti a dôležité informácie** (dodatok).

Najpierw przeczytaj dodatek **Informacje o bezpieczeństwie i ważne uwagi**.

Először a (mellékelt) **Biztonsági és fontos tudnivalók** című dokumentumot olvassa el!

Önce **Güvenlik ve Önemli Bilgiler** başlıklı eki okuyun.

Citiți mai întâi **Informații cu privire la siguranță și alte informații importante** (anexa).

Прочетете най-напред **Информация за безопасността и важна информация** (приложение).

Najprej preberite **Informacije o varnosti in pomembne informacije** (dodatek).

Najprije pročitajte **Sigurnosne i važne informacije** (dodatak).



Q T 6 2 2 7 9 V 0 2

# 1



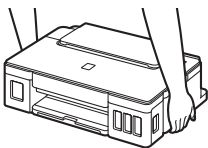
Εγκατάσταση του εκτυπωτή .....	σελίδα 1
Instalace tiskárny.....	str. 1
Inštalácia tlačiarne.....	strana 1
Instalowanie drukarki.....	strona 1
A nyomtató üzembe helyezésé.....	1. oldal
Yazıcıyı Kurma .....	sayfa 1
Instalarea imprimantei .....	pagina 1
Инсталиране на принтера.....	стр. 1
Namestitev tiskalnika.....	stran 1
Instaliranje pisača.....	stranica 1

# 2



Σύνδεση με υπολογιστή.....	σελίδα 4
Připojení k počítači .....	str. 4
Pripojenie k počítaču .....	strana 4
Podłączanie do komputera .....	strona 4
Csatlakoztatás számítógéphez.....	4. oldal
Bilgisayara Bağlanma.....	sayfa 4
Conectarea cu computerul .....	pagina 4
Свързване с компютър .....	стр. 4
Povezovanje z računalnikom.....	stran 4
Povezivanje s računalom.....	stranica 4

Πώς να κρατάτε τον εκτυπωτή  
 Jak tiskárnu držet  
 Ako držať tlačiareň  
 Chwyatanie drukarki  
 Hogyan kell tartani a nyomtatót?  
 Yazıcıyı Tutma  
 Cum se ține imprimanta  
 Как да държите принтера  
 Kako držati tiskalnik  
 Kako držati pisac



Επεξηγηματικές ταινίες  
 Videá s vysvětlením  
 Inštruktážne videá  
 Filmy poglądowe  
 Magyarázó videók  
 Açıklayıcı Filmler  
 Filme explicative  
 Разяснителни филми  
 Videoposnetki z navodili  
 Videozapisi s objašnjenjima



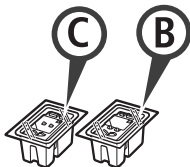
<http://ij.start.canon>



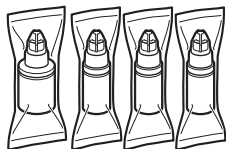
3.XXXXXXXXXXXXXXX



## 1. Έλεγχος των στοιχείων που περιλαμβάνονται



□ Φυσιγγίο



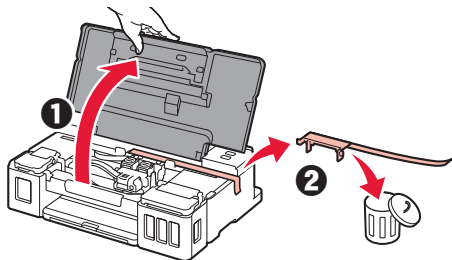
□ Φιάλη μελάνης

- Καλώδιο τροφοδοσίας
- CD-ROM εγκατάστασης για Windows PC
- Πληροφορίες για την ασφάλεια και σημαντικές πληροφορίες
- Ξεκινώντας (αυτό το εγχειρίδιο)

## 2. Αφαίρεση υλικών συσκευασίας



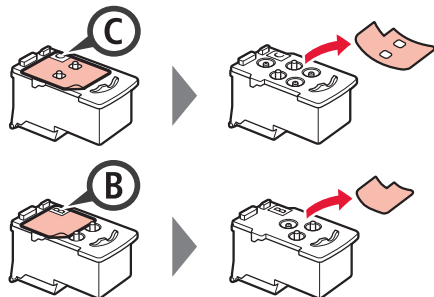
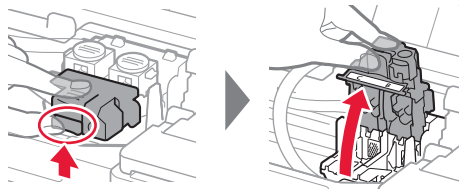
- 1 Αφαιρέστε τη συσκευασία (όπως η πορτοκαλί ταινία) από τον εκτυπωτή.
- 2 **1** Ανοίξτε το επάνω κάλυμμα.  
**2** Αφαιρέστε την πορτοκαλί ταινία και το προστατευτικό υλικό και πετάξτε τα.



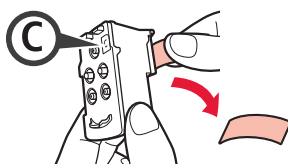
## 3. Τοποθέτηση του φυσιγγίου



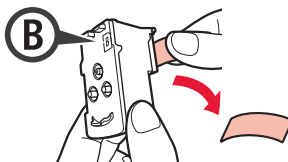
- 1 Ανοίξτε το κάλυμμα ασφάλισης φυσιγγίου.
- 2 Βγάλτε κάθε φυσιγγίο από τη συσκευασία και αφαιρέστε την ετικέτα.



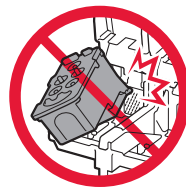
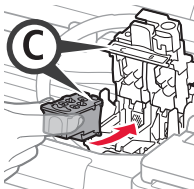
- 3 Αφαιρέστε την προστατευτική ταινία.



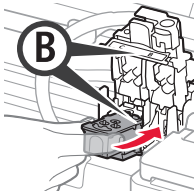
Μην αγγίζετε.



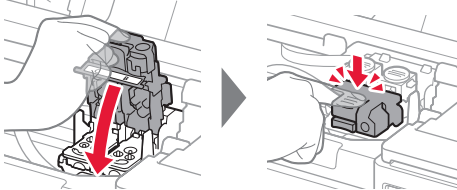
- 4 Τοποθετήστε το C (έγχρωμο) φυσιγγίο στα αριστερά και το B (μαύρο) φυσιγγίο στα δεξιά.



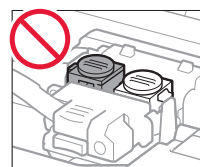
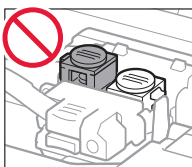
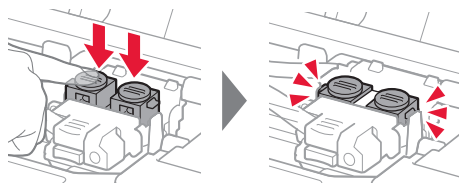
Μην το χτυπάτε στα περιβάλλοντα μέρη.



- 5 Κλείστε το κάλυμμα ασφάλισης φυσιγγίου και πιέστε το προς τα κάτω.



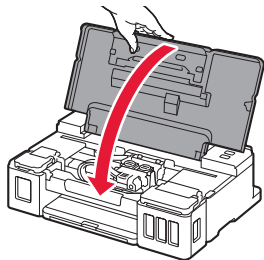
- 6 Πιέστε εντελώς κάτω και τα δύο κουμπιά αρμού.



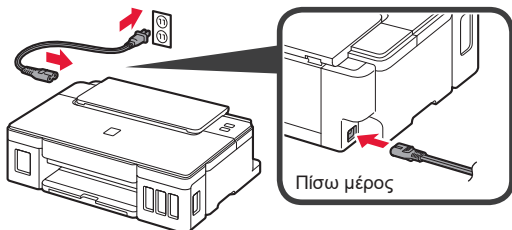
## 4. Ενεργοποίηση του εκτυπωτή



- 1 Κλείστε το επάνω κάλυμμα.

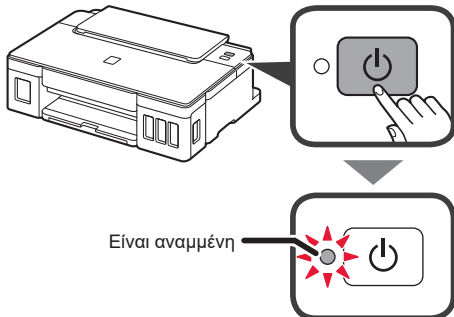


- 2 Συνδέστε το καλώδιο τροφοδοσίας.

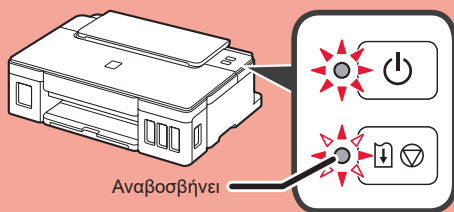


Μη συνδέετε ακόμα τυχόν άλλα καλώδια εκτός από το καλώδιο τροφοδοσίας.

- 3 Πατήστε το κουμπί ON.



Εάν η λυχνία Προσοχή (Alarm) αναβοσβήνει, ανατρέξτε στην ενότητα "Όταν αναβοσβήνει κάποια λυχνία" στη σελίδα 3 για να επιλύσετε το πρόβλημα.

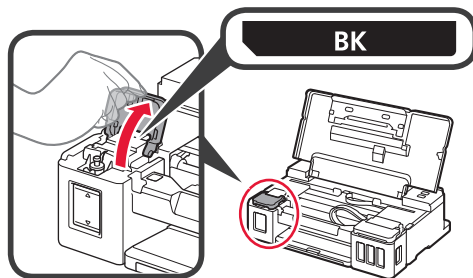


## 5. Άδειασμα μελάνης

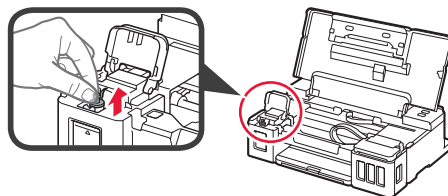


Αυτό το προϊόν απαιτεί προσεκτικό χειρισμό της μελάνης. Ενδέχεται να πεταχτεί μελάνη όταν τα δοχεία μελάνης είναι γεμάτα. Εάν τα ρούχα σας ή κάποιο αντικείμενο λερωθούν με μελάνη, μπορεί να μην καθαρίσουν.

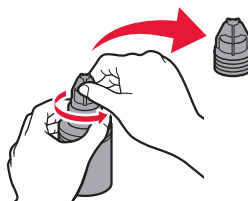
- 1 Ανοίξτε το επάνω κάλυμμα.  
2 Ανοίξτε το κάλυμμα δοχείου μελάνης.



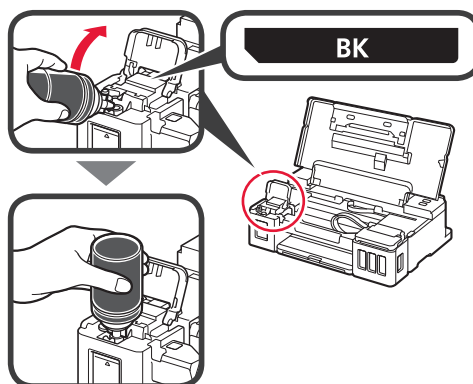
- 3 Πιάστε και αφαιρέστε το κάλυμμα δοχείου του δοχείου μελάνης.



- 4 Κρατήστε τη φιάλη μελάνης σε όρθια θέση και αφαιρέστε το κάλυμμα φιάλης.

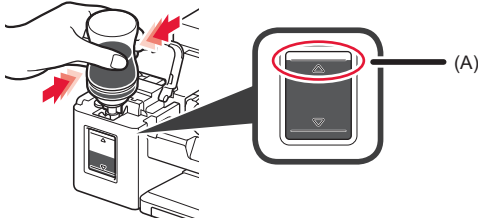


- 5 Τοποθετήστε το ακροφύσιο της φιάλης μελάνης στο σημείο εισροής και γυρίστε τη φιάλη μελάνης ανάποδα.

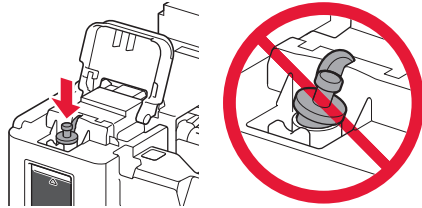




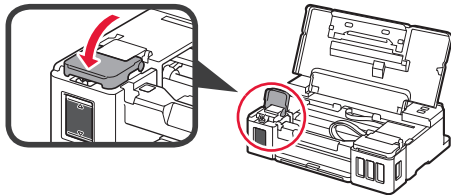
- 6 Αδειάστε όλη την ποσότητα μελάνης στο δοχείο μελάνης. Βεβαιωθείτε ότι έχετε συμπληρώσει μελάνη μέχρι την πάνω γραμμή ορίου (A).



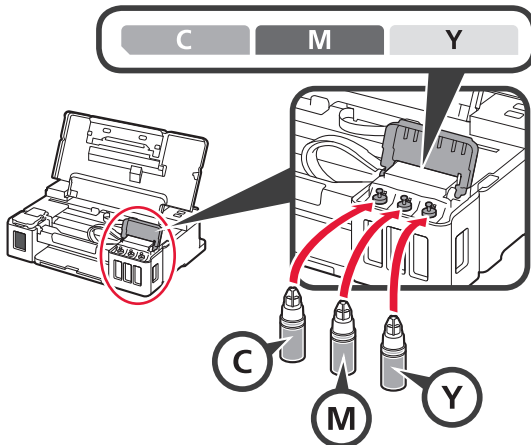
- 7 Τοποθετήστε ξανά το κάλυμμα δοχείου με ασφάλεια.



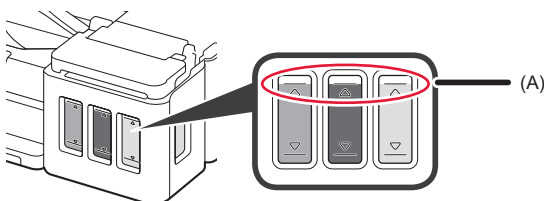
- 8 Κλείστε το κάλυμμα δοχείου μελάνης.



- 9 Επαναλάβετε τα βήματα 2 έως 8 για να αδειάσετε όλη την ποσότητα μελάνης στα αντίστοιχα δοχεία μελάνης στα δεξιά σύμφωνα με την επισήμανση.



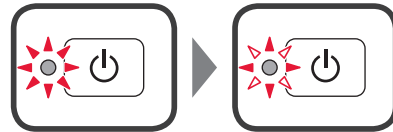
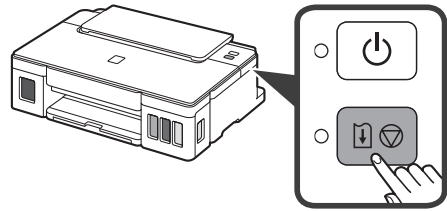
Βεβαιωθείτε ότι έχετε συμπληρώσει μελάνη μέχρι την πάνω γραμμή ορίου (A).



- 10 Κλείστε το επάνω κάλυμμα.

## 6. Προετοιμασία συστήματος μελάνης

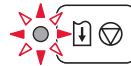
- 1 Πατήστε το κουμπί **ΕΠΑΝΑΦΟΡΑΣ/ΑΚΥΡΩΣΗΣ (RESUME/CANCEL)** και, στη συνέχεια, βεβαιωθείτε ότι η λυχνία **ON**, που πριν άναβε σταθερά, τώρα αναβοσβήνει.



Η προετοιμασία μελάνης απαιτεί περίπου 5 έως 6 λεπτά. Προχωρήστε στην επόμενη σελίδα.

### ? Όταν αναβοσβήνει κάποια λυχνία

Η λυχνία Προσοχή (Alarm) αναβοσβήνει



Μετρήστε τον αριθμό των αναβοσβησιμάτων για να προσδιορίσετε την αιτία του προβλήματος.

- 4 φορές  
Τα φυσιγγία δεν έχουν τοποθετηθεί σωστά.  
➔ «3. Τοποθέτηση του φυσιγγίου» στη σελίδα 1
- 5 φορές  
Δεν έχει εγκατασταθεί κανένα φυσιγγίο.  
➔ «3. Τοποθέτηση του φυσιγγίου» στη σελίδα 1
- 9 φορές  
Το προστατευτικό υλικό δεν έχει αφαιρεθεί.  
➔ «2. Αφαίρεση υλικών συσκευασίας» στη σελίδα 1

Η λυχνία ON αναβοσβήνει



Προετοιμασία του συστήματος μελάνης. Διαρκεί περίπου 5 έως 6 λεπτά. Προχωρήστε στην επόμενη σελίδα.

Η λυχνία ON και η λυχνία Προσοχή (Alarm) αναβοσβήνουν εναλλάξ 8 φορές

Δεν έχει γίνει σωστή προετοιμασία της μελάνης.

Πατήστε το κουμπί **ON** για να κάνετε επανεκκίνηση του εκτυπωτή και, στη συνέχεια, επαναλάβετε τη διαδικασία από την ενότητα «5. Άδειασμα μελάνης» στη σελίδα 2.

Για όλες τις λοιπές περιπτώσεις, ανατρέξτε στο **Εγχειρίδιο Online**.

## 7. Σύνδεση σε υπολογιστή

Windows



Απαιτείται ρύθμιση σύνδεσης για κάθε υπολογιστή. Προχωρήστε στη ρύθμιση από το βήμα 1 για κάθε υπολογιστή.

1 Εκκινήστε το αρχείο εγκατάστασης για κάθε μέθοδο **A** ή μέθοδο **B**.

### A Λήψη από το διαδίκτυο

- 1 Ανοίξτε ένα πρόγραμμα περιήγησης ( κ.λπ.) στον υπολογιστή σας.
- 2 Καταχωρίστε το ακόλουθο URL και μεταβείτε στη διαδικτυακή τοποθεσία της Canon.

<http://ij.start.canon>



- 3 Επιλέξτε **Εγκατάσταση**.



- 4 Καταχωρίστε το όνομα του μοντέλου του εκτυπωτή σας και κάντε κλικ στην επιλογή **OK**.



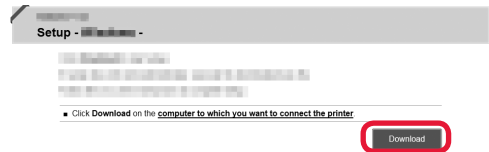
Μπορείτε να επιλέξετε ένα όνομα μοντέλου από τη λίστα.

- 5 Κάντε κλικ στην επιλογή **Εγκατάσταση**.



Οι διαδικασίες για Windows εμφανίζονται παρακάτω. Αν χρησιμοποιείτε υπολογιστή με λειτουργικό σύστημα που δεν είναι Windows, προχωρήστε στην εγκατάσταση σύμφωνα με τις οδηγίες που εμφανίζονται στην οθόνη.

- 6 Κάντε κλικ στην επιλογή **Λήψη** και κατεβάστε το αρχείο εγκατάστασης.



- 7 Εκτελέστε το ληφθέν αρχείο.

Για να συνεχίσετε, προχωρήστε στο βήμα 2 στην επόμενη σελίδα.

### B Χρήση CD-ROM εγκατάστασης (μόνο για Windows)

#### ■ Κατά τη χρήση Windows 10 ή Windows 8.1:

- 1 Τοποθετήστε το CD-ROM εγκατάστασης στον υπολογιστή σας.



- 2 Όταν το ακόλουθο μήνυμα εμφανίζεται στη δεξιά πλευρά της οθόνης του υπολογιστή, κάντε κλικ σε αυτό.



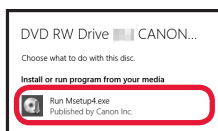
Όταν αυτό το μήνυμα δεν εμφανίζεται (ή έχει εξαφανιστεί)

1. Κάντε κλικ στην επιλογή **Εξερεύνηση αρχείων (File Explorer)**, στη γραμμή εργασιών.



2. Κάντε κλικ στην επιλογή **Αυτός ο υπολογιστής (This PC)**, στην αριστερή πλευρά του παραθύρου που έχει ανοίξει.
3. Κάντε διπλό κλικ στο εικονίδιο του CD-ROM, στη δεξιά πλευρά του παραθύρου.  
Αν εμφανιστούν τα περιεχόμενα του CD-ROM, κάντε διπλό κλικ στο αρχείο **Msetup4.exe**.
4. Προχωρήστε στο βήμα **4**.

- 3 Αν εμφανιστεί η ακόλουθη οθόνη, κάντε κλικ στην επιλογή **Εκτέλεση Msetup4.exe (Run Msetup4.exe)**.



- 4 Αν εμφανιστεί το παράθυρο διαλόγου **Έλεγχος λογαριασμού χρήστη (User Account Control)**, κάντε κλικ στην επιλογή **Ναι (Yes)**.

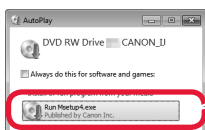
Για να συνεχίσετε, προχωρήστε στο βήμα 2.

### ■ Κατά τη χρήση Windows 7:


- 1 Τοποθετήστε το CD-ROM εγκατάστασης στον υπολογιστή σας.



- 2 Όταν εμφανιστεί η οθόνη **Αυτόματη αναπαραγωγή (AutoPlay)**, κάντε κλικ στην επιλογή **Εκτέλεση Msetup4.exe (Run Msetup4.exe)**.



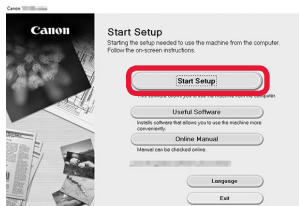
Όταν δεν εμφανίζεται η οθόνη **Αυτόματη αναπαραγωγή (AutoPlay)**

1. Κάντε κλικ στην επιλογή **Υπολογιστής (Computer)** από το μενού έναρξης.
2. Κάντε διπλό κλικ στο  εικονίδιο του CD-ROM, στη δεξιά πλευρά του παραθύρου που έχει ανοίξει. Αν εμφανιστούν τα περιεχόμενα του CD-ROM, κάντε διπλό κλικ στο αρχείο **Msetup4.exe**.

- 3 Αν εμφανιστεί το παράθυρο διαλόγου **Έλεγχος λογαριασμού χρήστη (User Account Control)**, κάντε κλικ στην επιλογή **Συνέχεια (Continue)**.

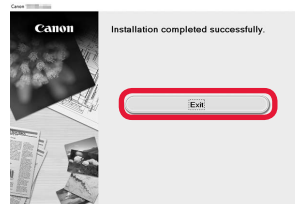
Για να συνεχίσετε, προχωρήστε στο βήμα 2.

- 2 Κάντε κλικ στο **Εκκίνηση ρύθμισης (Start Setup)**.



Ακολουθήστε τις οδηγίες στην οθόνη για να συνεχίσετε τη ρύθμιση.

- Αν εμφανιστεί η ακόλουθη οθόνη, κάντε κλικ στο **Έξοδος (Exit)**.

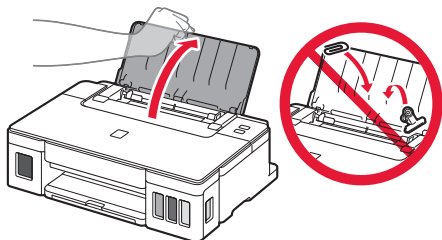


Η εγκατάσταση έχει ολοκληρωθεί όταν σταματήσει να αναβοσβήνει η λυχνία ON του εκτυπωτή και παραμένει αναμμένη. Μπορείτε να εκτυπώσετε από τον υπολογιστή σας.

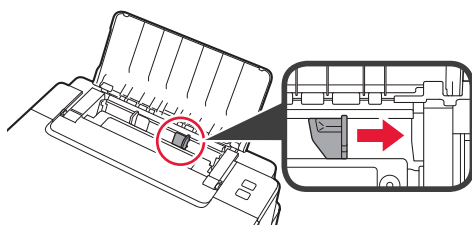
## Τοποθέτηση χαρτιού



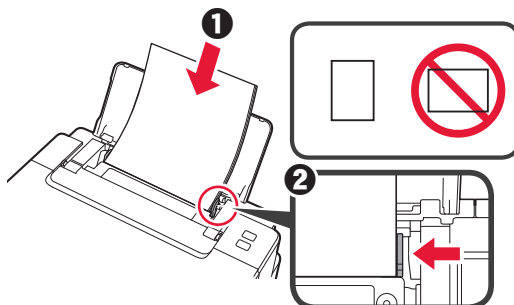
- 1 Ανοίξτε την υποστήριξη χαρτιού.



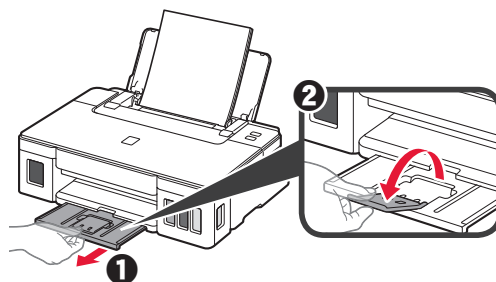
- 2 Σύρετε τον δεξιό οδηγό χαρτιού έως το τέρμα.



- 3
- 1 Τοποθετήστε χαρτί με την πλευρά εκτύπωσης στραμμένη προς τα πάνω.
  - 2 Σύρετε τον δεξιό οδηγό χαρτιού για να τον ευθυγραμμίσετε με την πλαϊνή πλευρά της στοίβας των χαρτιών.



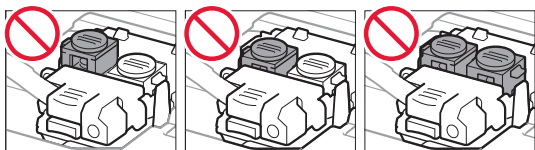
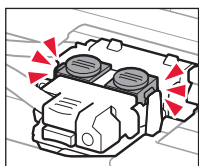
- 4
- 1 Τραβήξτε έξω τη θήκη εξόδου χαρτιού.
  - 2 Ανοίξτε την προέκταση θήκης εξόδου.



## Μεταφορά του εκτυπωτή σας

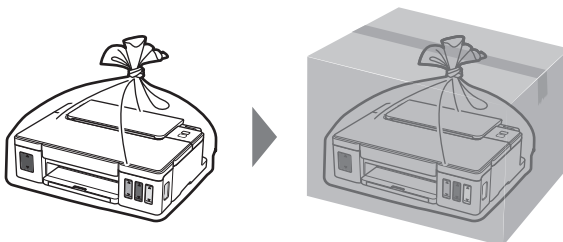
Κατά τη μετακίνηση του εκτυπωτή, βεβαιωθείτε για τα παρακάτω. Ανατρέξτε στο **Εγχειρίδιο Online** για λεπτομέρειες.

Ελέγξτε ότι και τα δύο κουμπιά αρμού είναι εντελώς πιεσμένα κάτω για να αποφύγετε διαρροές μελάνης.

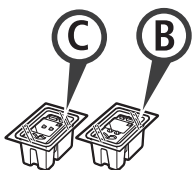


Συσκευάστε τον εκτυπωτή σε μια πλαστική τσάντα σε περίπτωση που διαρρεύσει μελάνη.

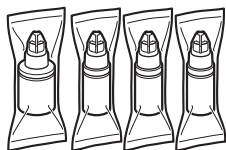
- Συσκευάστε τον εκτυπωτή σε ένα ανθεκτικό κιβώτιο ώστε η κάτω πλευρά του να τοποθετηθεί στον πάτο του κιβωτίου, χρησιμοποιώντας επαρκή ποσότητα προστατευτικού υλικού για την ασφαλή μεταφορά του.
- Μην γείρετε τον εκτυπωτή. Μπορεί να διαρρεύσει μελάνη.
- Δείξτε προσοχή κατά το χειρισμό και φροντίστε η συσκευασία να είναι όρθια και ΟΧΙ ανάποδα ή στο πλάι, καθώς μπορεί να προκληθεί βλάβη στον εκτυπωτή και διαρροή μελάνης.
- Κατά τη μεταφορά του εκτυπωτή από κάποια εταιρεία μεταφορών, φροντίστε να επισημάνετε το κιβώτιο με την ένδειξη «ΑΥΤΗ Η ΠΛΕΥΡΑ ΕΠΑΝΩ» για να παραμείνει η κάτω πλευρά του εκτυπωτή στον πάτο του κιβωτίου. Προσθέστε επίσης τις επισημάνσεις «ΕΥΘΡΑΥΣΤΟ» ή «ΠΡΟΣΕΚΤΙΚΟΣ ΧΕΙΡΙΣΜΟΣ».



## 1. Kontrola obsahu balení



□ Kazeta



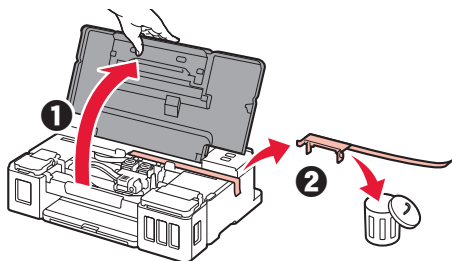
□ Láhev na inkoust

- Napájecí kabel
- Instalační disk CD-ROM pro počítač se systémem Windows
- Informace o bezpečnosti a důležitá sdělení
- Příručka pro uvedení do provozu (tato příručka)

## 2. Odstranění ochranného materiálu



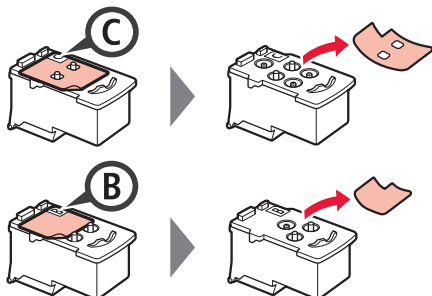
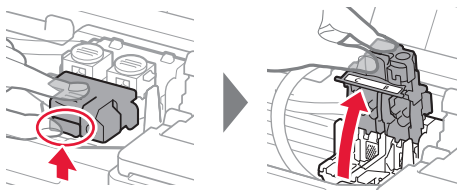
- 1 Odstraňte ochranný materiál okolo tiskárny, jako je například oranžová páska.
- 2 **1** Otevřete horní kryt.  
**2** Odstraňte oranžovou pásku i ochranný materiál a zahodte je.



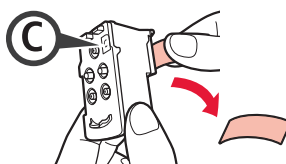
## 3. Instalace kazety



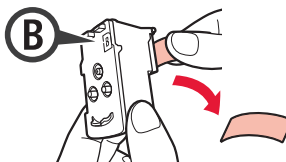
- 1 Otevřete zajišťovací kryt kazety.
- 2 Vyjměte jednotlivé kazety z obalu a odstraňte jejich etikety.



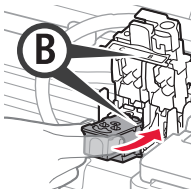
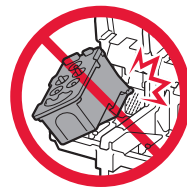
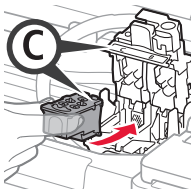
- 3 Odstraňte ochrannou pásku.



Těchto míst se nedotýkejte.

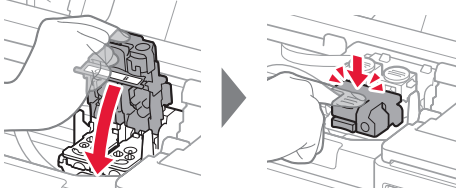


- 4 Zasuňte C (barevnou) kazetu nalevo a B (černou) kazetu napravo.

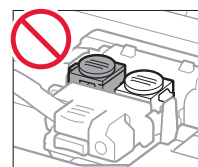
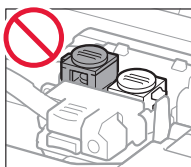
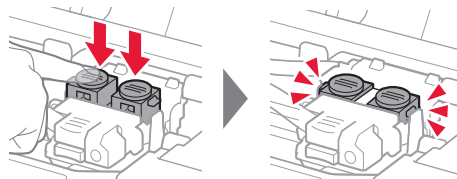


Při manipulaci dávejte pozor, ať nenarazíte do okolních součástí.

- 5 Zavřete zajišťovací kryt kazety a zatlačte jej směrem dolů.



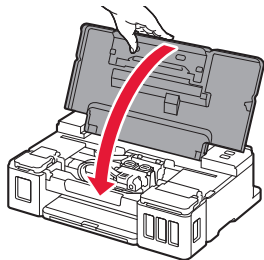
- 6 Zatlačte obě tlačítka pro spojení zcela dolů.



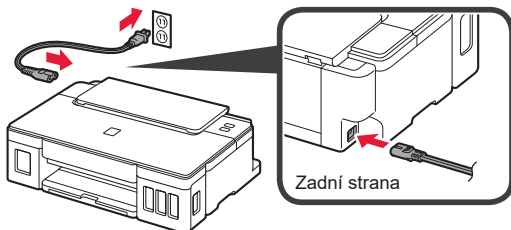
## 4. Zapnutí tiskárny



- 1 Zavřete horní kryt.

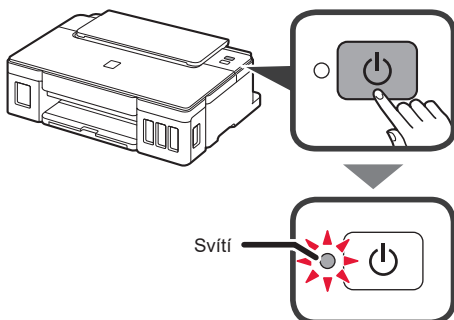


- 2 Připojte napájecí kabel.

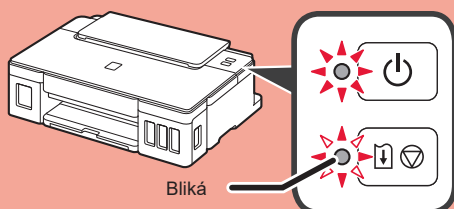


Nepřipojujte zatím žádný kabel kromě napájecího.

- 3 Stiskněte tlačítko **ZAPNOUT (ON)**.



Pokud kontrolka **Alarm** bliká, pokuste se chyby vyřešit podle informací v tématu „Pokud kontrolka bliká“ na straně 3.

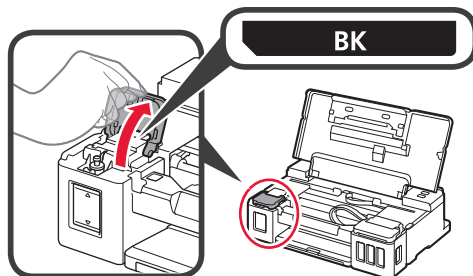


## 5. Nalítí inkoustu

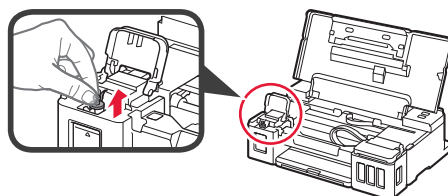


Tento produkt vyžaduje pečlivé zacházení s inkoustem. Při plnění inkoustu do nádrží s inkoustem může tento inkoust vystříknout. Inkoust z případně potřísněného oblečení nebo jiných předmětů nemusí jít odstranit.

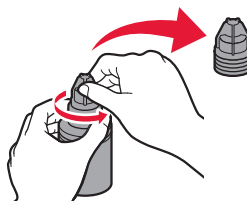
- 1 Otevřete horní kryt.  
2 Otevřete kryt nádrží s inkoustem.



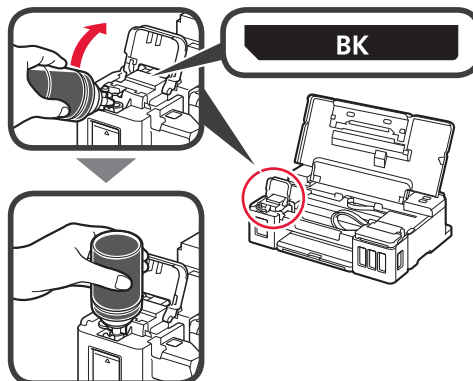
- 3 Uchopte krytku nádrží, odstraňte ji z nádrží s inkoustem.



- 4 Láhev na inkoust uchopte v její vzpřímené poloze a odstraňte krytku láhve.

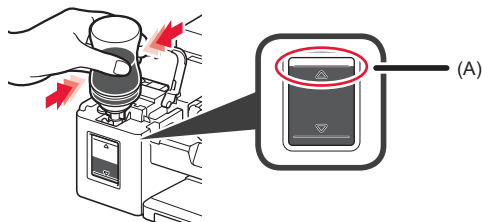


- 5 Trysku láhve na inkoust zasuňte do přívodu a láhev na inkoust postavte vzhůru nohama.

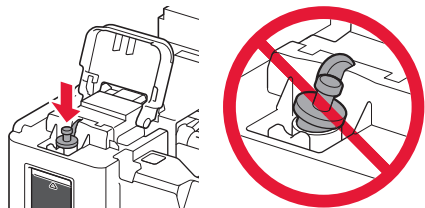




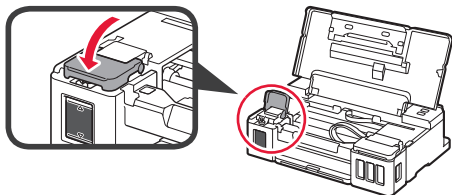
- 6 Nalijte veškerý inkoust do nádrčky s inkoustem. Ujistěte se, že inkoust byl naplněn až po linku horního množství (A).



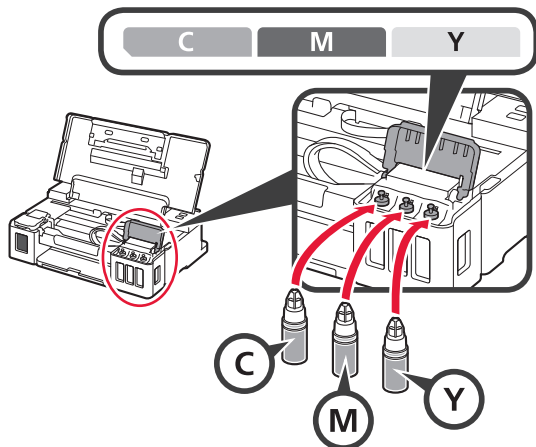
- 7 Bezpečně nasadte krytku nádrčky.



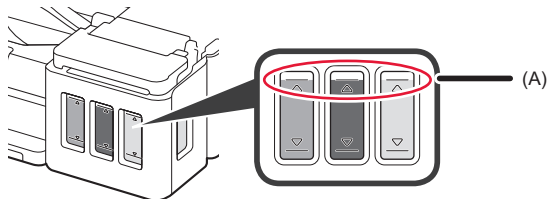
- 8 Zavřete kryt nádrčky s inkoustem.



- 9 Zopakováním kroků 2 až 8 nalijte veškerý inkoust do odpovídajících nádrček s inkoustem napravo podle jejich označení.



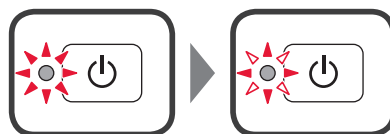
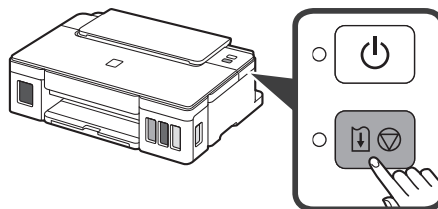
Ujistěte se, že inkoust byl naplněn až po linku horního množství (A).



- 10 Zavřete horní kryt.

## 6. Příprava systému inkoustu

- 1 Stiskněte tlačítko **POKRAČOVAT/STORNO (RESUME/CANCEL)** a ujistěte se, že kontrolka **ZAPNOUT (ON)** přestala svítit a začala blikat.



Příprava inkoustu trvá přibližně 5 až 6 minut. Pokračujte na další stránce.

### ? Pokud kontrolka bliká

#### Kontrolka Alarm bliká



Podle počtu bliknutí určete příčinu potíží.

- 4krát  
Kazety nejsou nainstalovány správně.  
→ „3. Instalace kazety“ na straně 1
- 5krát  
Nejsou nainstalovány žádné kazety.  
→ „3. Instalace kazety“ na straně 1
- 9krát  
Neodstranili jste ochranný materiál.  
→ „2. Odstranění ochranného materiálu“ na straně 1

#### Kontrolka ZAPNOUT (ON) bliká



Inkoustový systém se připravuje. Tato akce může trvat přibližně 5 až 6 minut. Pokračujte na další stránce.

#### Kontrolka ZAPNOUT (ON) a Alarm střídavě blikají 8krát

Inkoust není normálně připraven.

Stisknutím tlačítka **ZAPNOUT (ON)** tiskárnu restartujte a poté zopakujte postup z tématu „5. Nalítí inkoustu“ na straně 2.

Všechny další informace naleznete v dokumentu **Příručka online**.



## 7. Připojení k počítači

Windows



Nastavení připojení je třeba provést u každého počítače. Při nastavení postupujte u každého počítače od kroku 1.

- 1 Spusťte instalační soubor pro metodu **A** nebo **B**.

### A Stažení z internetu

- 1 V počítači otevřete webový prohlížeč (e apod.).
- 2 Vložte následující adresu URL a přejděte na stránky společnosti Canon.

<http://ij.start.canon>



- 3 Vyberte možnost **Nastavení**.



- 4 Zadejte název modelu vaší tiskárny a klepněte na tlačítko **OK**.



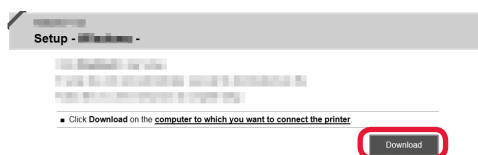
Název modelu můžete zvolit také ze seznamu.

- 5 Klepněte na tlačítko **Nastavení**.



V následující části naleznete postup pro systém Windows. Pokud používáte počítač s jiným operačním systémem, než je Windows, proveďte instalaci podle pokynů na obrazovce.

- 6 Klepnutím na tlačítko **Stáhnout** stáhněte instalační soubor.



- 7 Spusťte stažený soubor.

**Pokračujte krokem 2 na další stránce.**

### B Použití instalačního disku CD-ROM (pouze v systému Windows)

#### ■ Při použití systému Windows 10 nebo Windows 8.1:

- 1 Vložte instalační disk CD-ROM do počítače.



- 2 Jakmile se na pravé straně obrazovky počítače zobrazí následující zpráva, klepněte na ni.



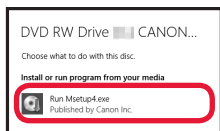
Pokud se tato zpráva nezobrazí (nebo zmizí)

1. Na hlavním panelu klepněte na tlačítko **Průzkumník souborů (File Explorer)**.



2. Na levé straně otevřeného okna klepněte na tlačítko **Tento počítač (This PC)**.
3. Poklepejte na ikonu CD-ROM v pravé části okna. Po otevření obsahu disku CD-ROM poklepejte na soubor **Msetup4.exe**.
4. Přejděte ke kroku **4**.

3 Pokud se otevře následující obrazovka, klepněte na tlačítko **Spustit Msetup4.exe (Run Msetup4.exe)**.



4 Pokud se otevře dialogové okno **Řízení uživatelských účtů (User Account Control)**, klepněte na tlačítko **Ano (Yes)**.

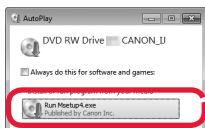
## Pokračujte od kroku 2.

### ■ Při použití systému Windows 7:

1 Vložte instalační disk CD-ROM do počítače.



2 Pokud se otevře obrazovka **Přehrát automaticky (AutoPlay)**, klepněte na tlačítko **Spustit Msetup4.exe (Run Msetup4.exe)**.



Pokud se obrazovka **Přehrát automaticky (AutoPlay)** neotevře

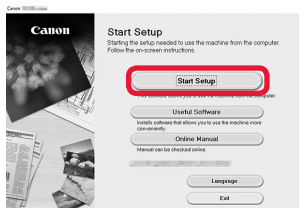
1. V nabídce Start klepněte na tlačítko **Počítač (Computer)**.
2. Poklepejte na ikonu CD-ROM v pravé části otevřeného okna. Po otevření obsahu disku CD-ROM poklepejte na soubor **Msetup4.exe**.

3 Pokud se otevře dialogové okno **Řízení uživatelských účtů (User Account Control)**, klepněte na tlačítko **Pokračovat (Continue)**.

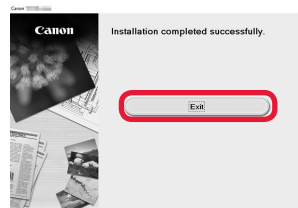
## Pokračujte od kroku 2.

2 Klepněte na tlačítko **Zahájit nastavení (Start Setup)**.

Pokud se otevře následující obrazovka, klepněte na tlačítko **Konec (Exit)**.



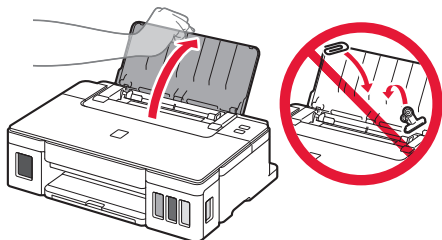
**S nastavením postupujte podle pokynů uvedených na obrazovce.**



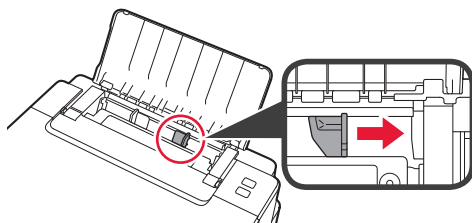
**Nastavení lze považovat za dokončené jakmile kontrolka ZAPNOUT (ON) přestane blikat a začne svítit. Nyní můžete tisknout ze svého počítače.**



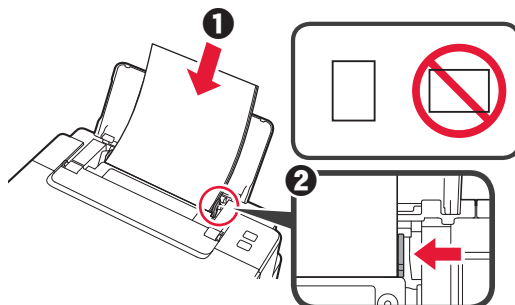
- 1 Otevřete opěrku papíru.



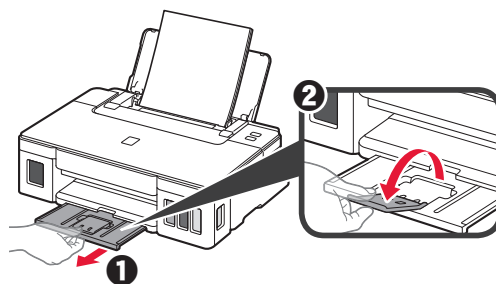
- 2 Posuňte pravé vodičko papíru do koncové polohy.



- 3
- 1 Vložte papír tiskovou stranou nahoru.
  - 2 Posunutím vodička papíru doprava je zarovnejte se stranou stohu papíru.



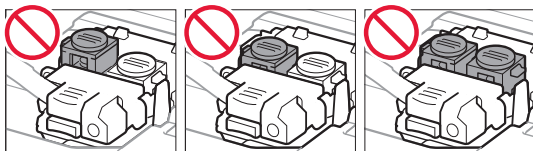
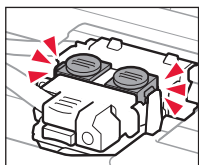
- 4
- 1 Vytáhněte výstupní zásobník na papír.
  - 2 Otevřete nástavec výstupního zásobníku.



## Přeprava tiskárny

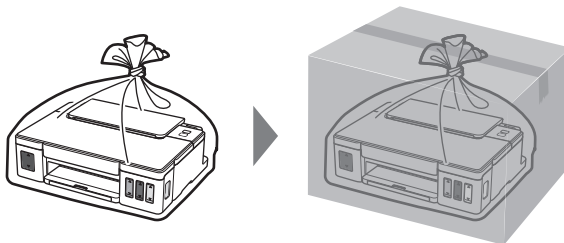
Při přepravě tiskárny dodržujte tyto pokyny. Podrobnosti naleznete v **Příručka online**.

Zkontrolujte, zda jsou obě tlačítka pro spojení zatlačena zcela dolů, aby neunikl inkoust.

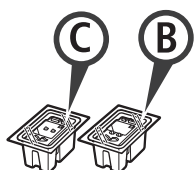


Tiskárnu zabalte do plastové tašky, kdyby z ní náhodou unikl inkoust.

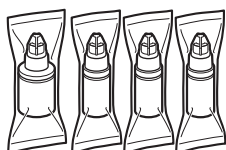
- Zabalte tiskárnu do pevné krabice tak, aby bylo umístěno dnem dolů. Použijte dostatečné množství ochranného materiálu, aby přeprava byla bezpečná.
- Tiskárnu nenaklánějte. Může dojít k úniku inkoustu.
- Při manipulaci postupujte obezřetně a dbejte na to, aby balení zůstávalo vždy ve správné poloze, tedy NE hlavou dolů nebo na boku. V opačném případě hrozí poškození tiskárny a úniku inkoustu v tiskárně.
- Pokud odesíláte tiskárnu prostřednictvím pošty nebo jiného přepravce, označte balík nápisem „TOUTO STRANOU NAHORU“. Zajistěte tak přepravu tiskárny v poloze dnem dolů. Dodejte také označení „KREHKÉ“ nebo „OPATRŇE“.



## 1. Kontrola dodaných súčastí



□ Zásobník



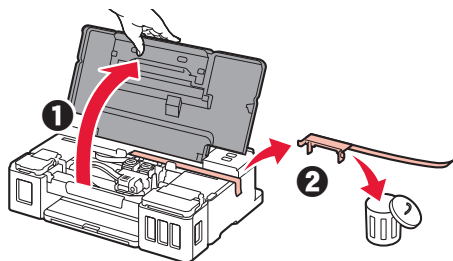
□ Flaša s atramentom

- Napájací kábel
- Inštalračný disk pre PC so systémom Windows
- Informácie o bezpečnosti a dôležité informácie
- Prvé spustenie (táto príručka)

## 2. Odstránenie obalového materiálu



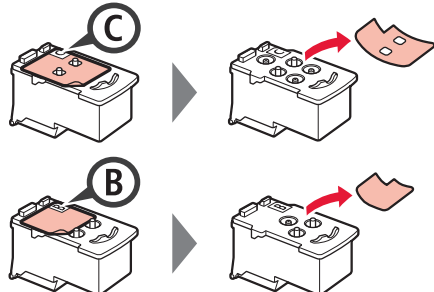
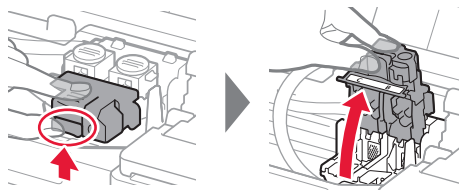
- 1 Odstráňte obalový materiál (ako je oranžová páska) z vonkajšej časti tlačiarne.
- 2 **1** Otvorte vrchný kryt.  
**2** Odstráňte oranžovú pásku a ochranný materiál a zahodte ich.



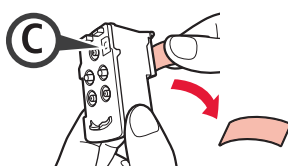
## 3. Inštalácia zásobníka



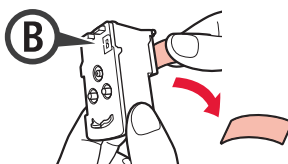
- 1 Otvorte zaisťovací kryt zásobníka.
- 2 Z balenia vyberte jednotlivé zásobníky a odstráňte ich štítky.



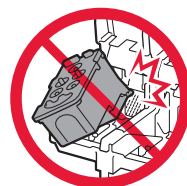
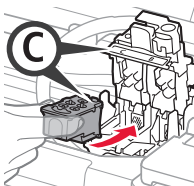
- 3 Odstráňte ochrannú pásku.



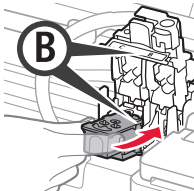
Týchto miest sa nedotýkajte.



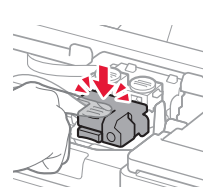
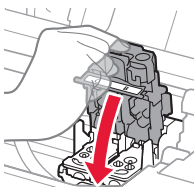
- 4 Zasuňte C (farebný) zásobník na ľavej strane a B (čierny) zásobník na pravej strane.



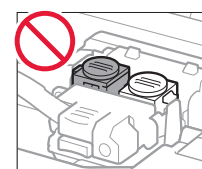
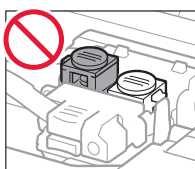
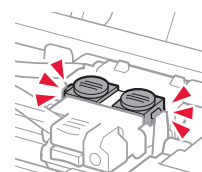
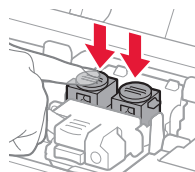
Dajte pozor, aby ste sa nedotkli okolitých súčastí.



- 5 Zatvorte zaisťovací kryt zásobníka a zatlačte ho nadol.



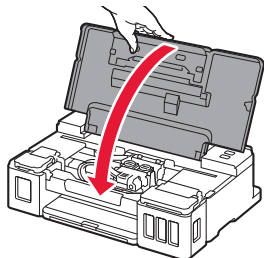
- 6 Zatlačte obe spojovacie tlačidlá úplne dole.



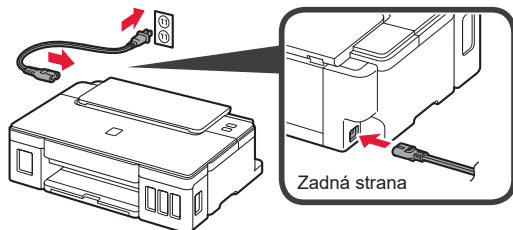
## 4. Zapnutie tlačiarne



- 1 Zatvorte vrchný kryt.

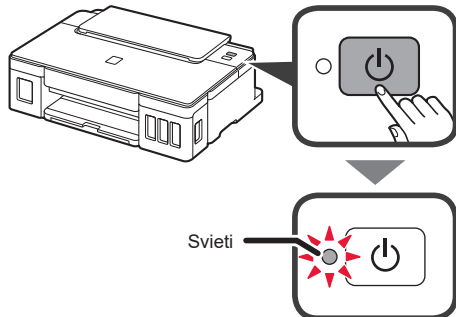


- 2 Pripojte napájací kábel.

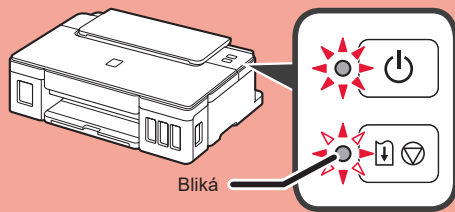


Zatiaľ nepripájajte žiadny kábel okrem napájacieho kábla.

- 3 Stlačte tlačidlo ZAP. (ON).



Pokiaľ indikátor **Alarm** bliká, pokúste sa chyby vyriešiť podľa informácií v časti „Ak indikátor bliká“ na strane 3.

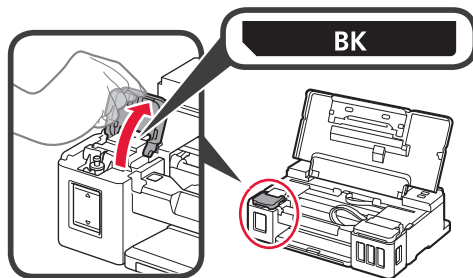


## 5. Naliatie atramentu

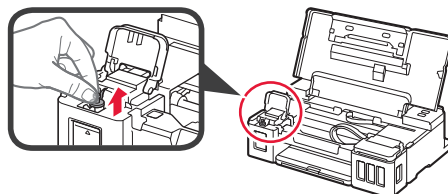


V prípade tohto produktu sa vyžaduje, aby ste s atramentom zaobchádzali opatrne. Z naplnených kaziet s atramentom sa môže vyliať atrament. Ak si atramentom zašpiníte oblečenie alebo iné veci, možno ho nebudete môcť zmyť.

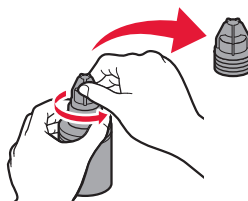
- 1 Otvorte vrchný kryt.  
2 Otvorte kryt kazety s atramentom.



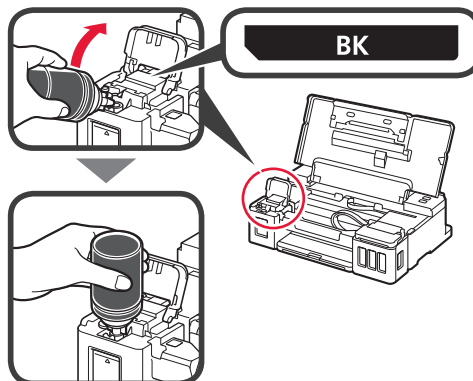
- 3 Chyťte a odstráňte kryt kazety na kazete s atramentom.



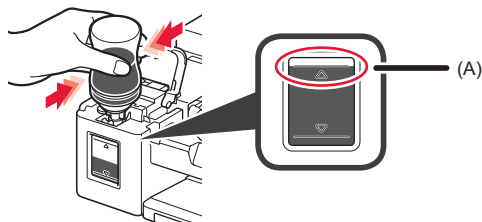
- 4 Držte fľašu s atramentom vzpriamene a odstráňte kryt fľaše.



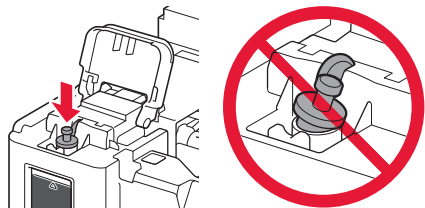
- 5 Vložte hrdlo fľaše s atramentom do vstupu a postavte fľašu s atramentom hlavou nadol.



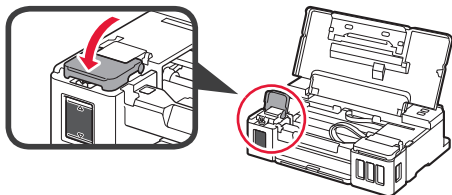
- 6 Všetok atrament nalejte do kazety s atramentom. Presvedčte sa, že atrament bol naliaty po čiaru horného limitu (A).



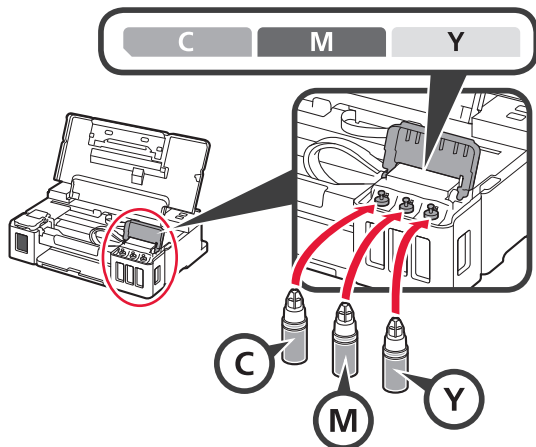
- 7 Bezpečne nasadte kryt kazety.



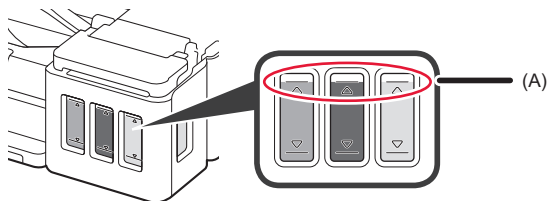
- 8 Zatvorte kryt kazety s atramentom.



- 9 Opakujte kroky 2 až 8 a podľa štítky vlejte všetok atrament do príslušných kaziet s atramentom na pravej strane.



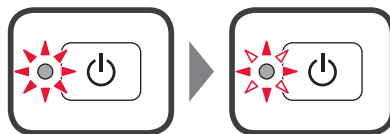
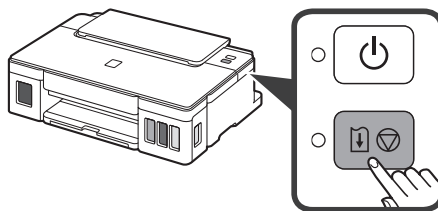
Presvedčte sa, že atrament bol naliaty po čiaru horného limitu (A).



- 10 Zatvorte vrchný kryt.

## 6. Pripravuje sa atramentový systém

- 1 Stlačte tlačidlo **POKRAČOVAŤ/ZRUŠIŤ (RESUME/CANCEL)** a uistite sa, že indikátor **ZAP. (ON)** prestal svietiť a začal blikať.



Príprava atramentu trvá približne 5 až 6 minút. Pokračujte na ďalšiu stranu.

### ? Pokiaľ indikátor blinká

#### Indikátor Alarm blinká



Podľa počtu bliknutí určte príčinu problémov.

- 4-krát  
Zásobníky nie sú vložené správne.  
→ „3. Inštalácia zásobníka“ na strane 1
- 5-krát  
Nie sú vložené žiadne zásobníky.  
→ „3. Inštalácia zásobníka“ na strane 1
- 9-krát  
Neodstránili ste ochranné materiály.  
→ „2. Odstránenie obalového materiálu“ na strane 1

#### Indikátor ZAP. (ON) blinká



Atramentový systém sa pripravuje. Táto akcia môže trvať približne 5 až 6 minút. Pokračujte na ďalšiu stranu.

#### Indikátor ZAP. (ON) a Alarm striedavo blikajú 8-krát

Atrament nie je pripravený normálne. Stlačením tlačidla **ZAP. (ON)** reštartujte tlačiareň a potom zopakujte postup z časti „5 Naliate atramentu“ na strane 2.

Informácie o ostatných prípadoch nájdete v dokumente **Príručka online**.

## 7. Pripojenie k počítaču

Windows



Nastavenie pripojenia je potrebné vykonať na každom počítači. Pri každom počítači postupujte v nastavení od kroku 1.

- 1 Spustíte súbor nastavení pre spôsob **A** alebo spôsob **B**.

### A Preberanie z internetu

- 1 Vo svojom počítači otvorte webový prehliadač (e a pod.).
- 2 Zadajte nasledujúcu adresu URL a prejdite na webovú stránku Canon.

<http://ij.start.canon>



- 3 Vyberte položku **Nastavenie**.



- 4 Zadajte názov modelu tlačiarne a kliknite na **OK**.



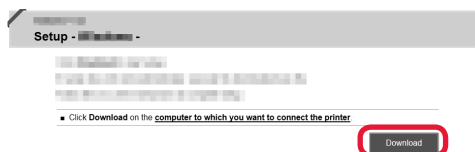
Názov modelu si môžete zvoliť zo zoznamu.

- 5 Kliknite na položku **Nastavenie**.



V nasledujúcej časti nájdete postup pre systém Windows. Ak používate počítač s iným operačným systémom, než je Windows, vykonajte inštaláciu podľa pokynov na obrazovke.

- 6 Kliknite na položku **Prevziať** a prevezmite si inštalčný súbor.



- 7 Spustíte prevzatý súbor.

**Pre pokračovanie prejdite na krok 2 na ďalšej strane.**

### B Používanie inštalčného disku (len pre Windows)

#### ■ Používanie Windows 10 alebo Windows 8.1:

- 1 Vložte inštalčný disk do počítača.



- 2 Po zobrazení nasledujúceho hlásenia na pravej strane obrazovky počítača naň kliknite.



Ak sa toto hlásenie nezobrazí (alebo zmizne)

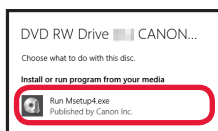
1. Na paneli úloh kliknite na možnosť **Prieskumník (File Explorer)**.



2. Kliknite na položku **Tento počítač (This PC)** na ľavej strane otvoreného okna.
3. Dvakrát kliknite na ikonu disku CD na pravej strane okna. Po zobrazení obsahu disku CD dvakrát kliknite na ikonu **Msetup4.exe**.
4. Pokračujte na krok **4**.



3 Ak sa zobrazí nasledovná obrazovka, kliknite na možnosť **Spustiť Msetup4.exe (Run Msetup4.exe)**.



4 Ak sa zobrazí dialógové okno **Kontrola používateľských kont (User Account Control)**, kliknite na možnosť **Áno (Yes)**.

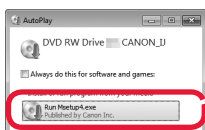
**Pre pokračovanie prejdite na krok 2.**

### ■ Používanie Windows 7:


1 Vložte inštalačný disk do počítača.



2 Po zobrazení obrazovky **Automatické prehrávanie (AutoPlay)** kliknite na možnosť **Spustiť Msetup4.exe (Run Msetup4.exe)**.



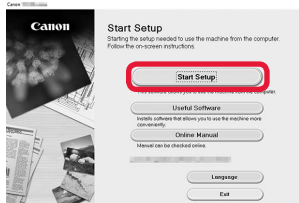
Ak sa obrazovka **Automatické prehrávanie (AutoPlay)** nezobrazí

1. V ponuke **Štart** kliknite na možnosť **Počítač (Computer)**.
2. Dvakrát kliknite na ikonu  disku CD na pravej strane otvoreného okna.  
Po zobrazení obsahu disku CD dvakrát kliknite na ikonu **Msetup4.exe**.

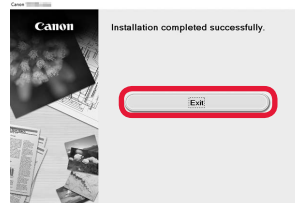
3 Ak sa zobrazí dialógové okno **Kontrola používateľských kont (User Account Control)**, kliknite na možnosť **Pokračovať (Continue)**.

**Pre pokračovanie prejdite na krok 2.**

2 Kliknite na položku **Spustiť nastavenie (Start Setup)**.



Ak sa otvorí nasledujúca obrazovka, kliknite na tlačidlo **Skončiť (Exit)**.



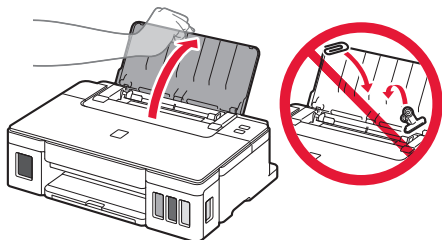
Postupujte podľa pokynov na obrazovke a pokračujte v nastavení.

**Nastavenie je dokončené, keď indikátor ZAP. (ON) tlačiarne prestane blikať a začne svietiť. Teraz môžete tlačiť zo svojho počítača.**

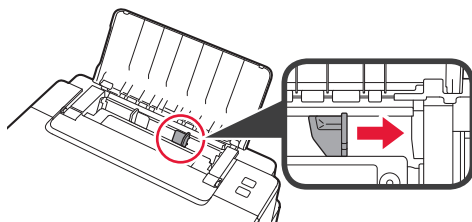
## Vloženie papiera



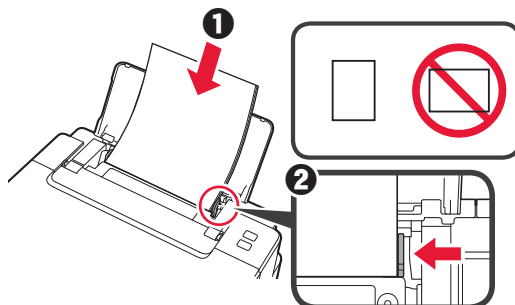
- 1 Otvorte podperu papiera.



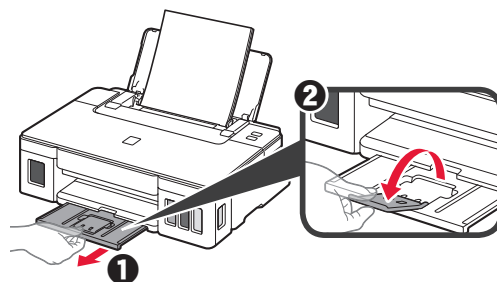
- 2 Posuňte pravú vodiacu lištu papiera do koncovej polohy.



- 3
- 1 Vložte papier tak, aby strana určená na tlač smerovala nahor.
  - 2 Posunutím vodiacej lišty papiera doprava ich zarovnajte so stranou stohu papiera.



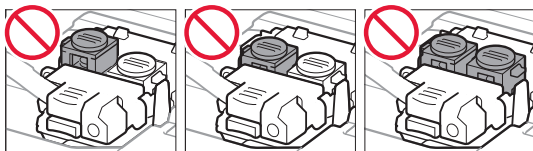
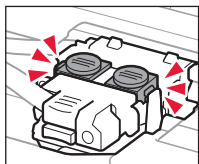
- 4
- 1 Vytiahnite výstupný zásobník papiera.
  - 2 Otvorte vysúvaciu časť výstupného zásobníka.



## Preprava tlačiarne

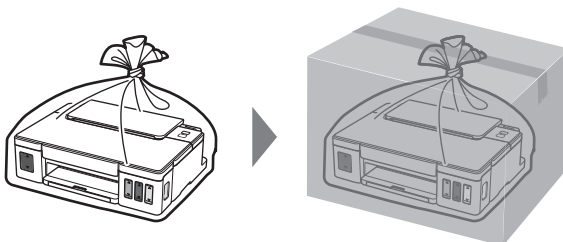
Pri premiestňovaní tlačiarne nezabudnite vykonať nasledujúce opatrenia. Podrobnosti nájdete v **Príručka online**.

Skontrolujte, či sú obe spojovacie tlačidlá úplne zatlačené dole, inak by mohol unikáť atrament.

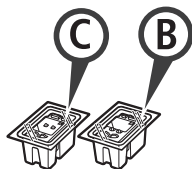


Tlačiareň zabaľte do plastovej tašky, keby z nej náhodou unikal atrament.

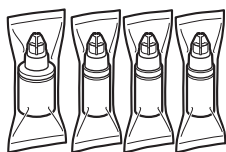
- Tlačiareň zabaľte do pevnej škatule tak, aby spodná strana smerovala nadol. Použite dostatočné množstvo ochranného materiálu, ktoré zaručí bezpečnú prepravu.
- Tlačiareň nenakláňajte. Môže dôjsť k priesaku atramentu.
- Buďte opatrní a dbajte na to, aby škatuľa zostala naplocho a nebola otočená zhora nadol alebo na stranu, keďže tlačiareň sa môže poškodiť a atrament v tlačiarňi môže presiaknuť.
- Ak prepravu tlačiarne zabezpečuje prepravná spoločnosť, označte škatuľu nápisom „TOUTO STRANOU NAHOR“, aby sa zaručilo, že spodná strana tlačiarne bude smerovať nadol. Škatuľu označte aj nápisom „KREHKÉ“ alebo „POZOR, SKLO!“.



## 1. Sprawdzanie elementów wchodzących w skład zestawu



□ Kasetka



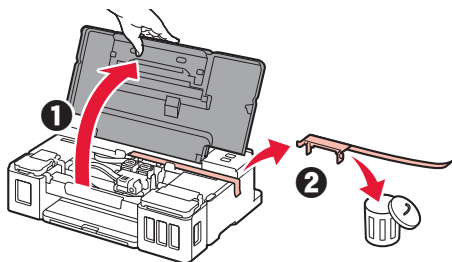
□ Butelka z atramentem

- Kabel zasilania
- Instalacyjny dysk CD-ROM do komputera Windows
- Informacje o bezpieczeństwie i ważne uwagi
- Pierwsze uruchomienie (ten podręcznik)

## 2. Usuwanie materiałów opakowaniowych



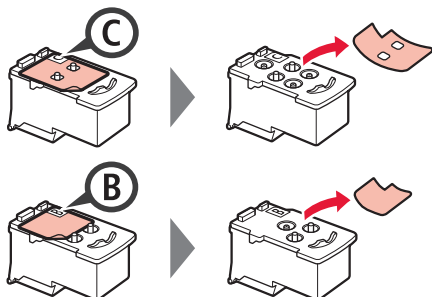
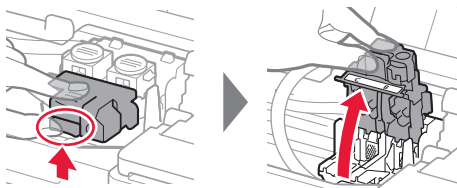
- 1 Zdejmij z zewnętrznych powierzchni drukarki materiały do pakowania (takie jak pomarańczowa taśma).
- 2 **1** Otwórz pokrywę górną.  
**2** Zdejmij pomarańczową taśmę i materiał ochronny i usuń je.



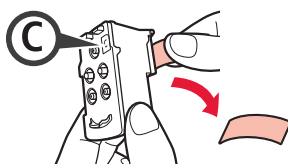
## 3. Instalowanie kasety



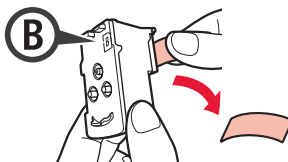
- 1 Otwórz pokrywę blokującą kasety.
- 2 Wymij wszystkie kasety z opakowania i usuń etykiety.



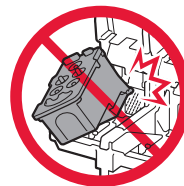
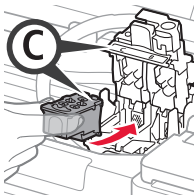
- 3 Zdejmij taśmę ochronną.



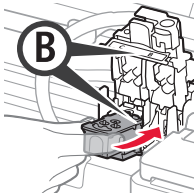
Nie dotykaj.



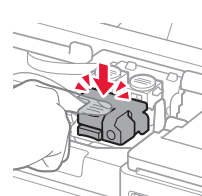
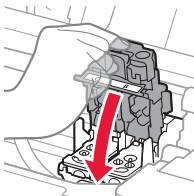
- 4 Zainstaluj C (kolorową) kasetę po lewej stronie, a B (czarną) kasetę po prawej stronie.



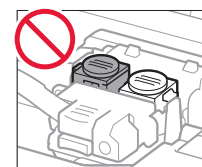
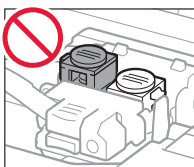
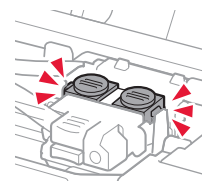
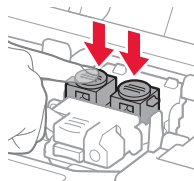
Nie uderzaj nią o sąsiadujące części.



- 5 Zamknij pokrywę blokującą kasety i naciśnij ją w dół.



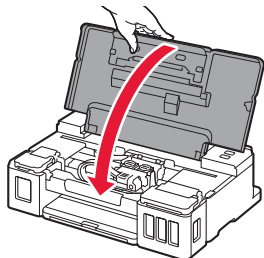
- 6 Naciśnij do końca obydwa przyciski połączenia.



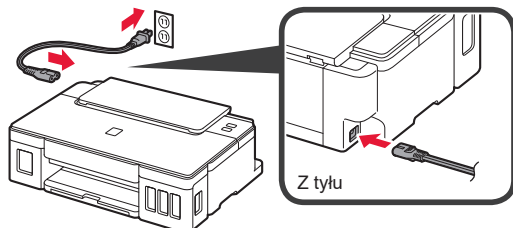
## 4. Włączanie drukarki



- 1 Zamknij pokrywę górną.

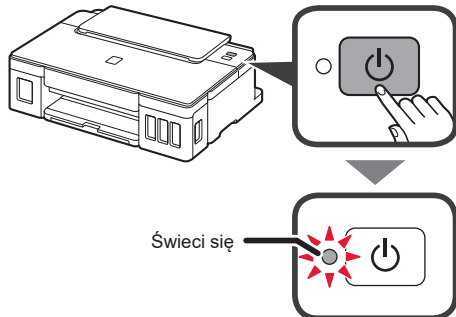


- 2 Podłącz kabel zasilania.

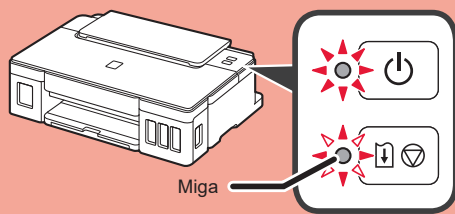


Nie podłączaj jeszcze żadnych kabli poza kablem zasilania.

- 3 Naciśnij przycisk **WŁ. (ON)**.



Jeśli kontrolka **Alarm** miga, zapoznaj się z tematem „Gdy kontrolka miga” na stronie 3, aby rozwiązać problem.

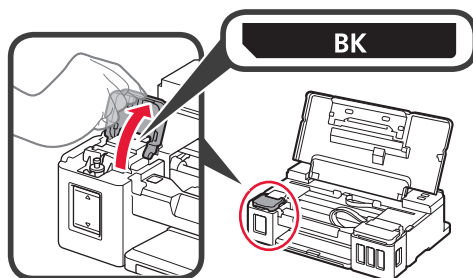


## 5. Wlewanie atramentu

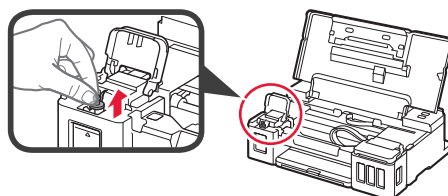


Ten produkt wymaga starannego obchodzenia się z atramentem. Atrament może się rozlać, jeśli zbiorniki z atramentem są wypełnione atramentem. Plamy z atramentu na ubraniu lub przedmiotach mogą być trudne do usunięcia.

- 1 Otwórz pokrywę górną.
- 2 Otwórz pokrywę zbiornika z atramentem.



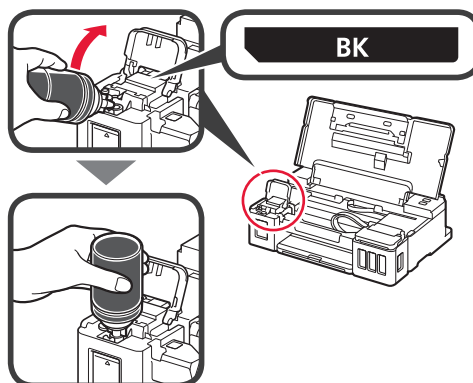
- 3 Chwyć i zdejmij nasadkę zbiornika ze zbiornika z atramentem.



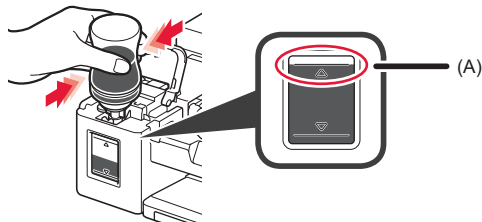
- 4 Trzymaj butelkę z atramentem pionowo i zdejmij zakrętkę butelki.



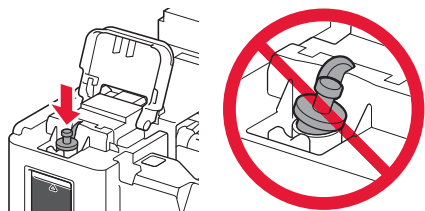
- 5 Włóż dyszę butelki z atramentem do wlotu i postaw butelkę z atramentem do góry dnem.



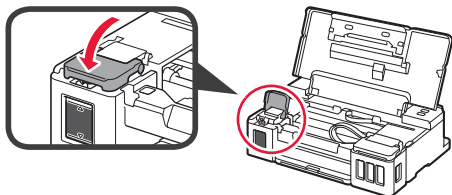
- 6 Wlej cały atrament do zbiornika z atramentem. Sprawdź, czy atrament sięga do górnej linii limitu (A).



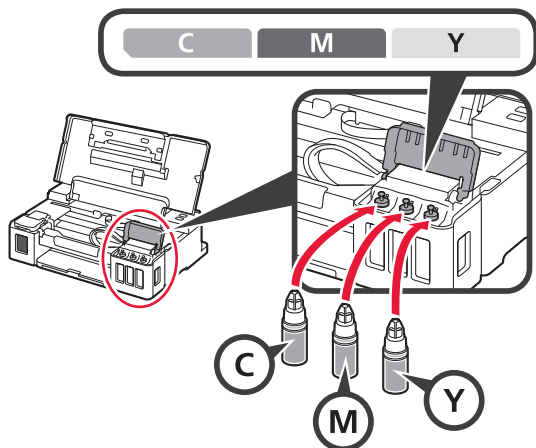
- 7 Starannie domknij nasadkę zbiornika.



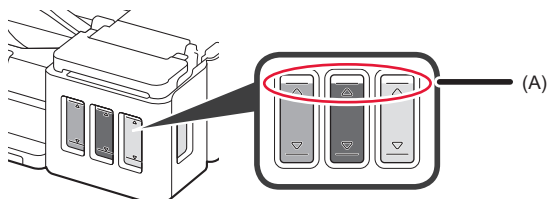
- 8 Zamknij pokrywę zbiornika z atramentem.



- 9 Powtórz czynności z punktów od 2 do 8, aby wlać cały atrament do odpowiednich zbiorników z atramentem po prawej stronie zgodnie z etykietą.



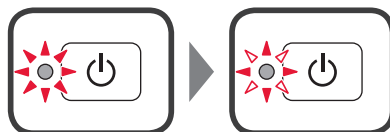
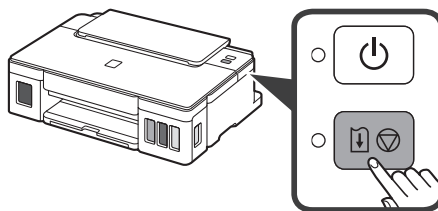
Sprawdź, czy atrament sięga do górnej linii limitu (A).



- 10 Zamknij pokrywę górną.

## 6. Przygotowywanie systemu atramentu

- 1 Naciśnij przycisk **WZNOW/ANULUJ (RESUME/CANCEL)**, a następnie potwierdź, że kontrolka **WŁ. (ON)** przestała świecić światłem ciągłym i zaczęła migać.



Przygotowanie atramentów zabiera od 5 do 6 minut. Przejdź do następnej strony.

### ? Gdy lampka miga

#### Kontrolka Alarm miga



Policz liczbę mignięć, aby określić przyczynę problemu.

- 4 razy  
Kasety nie są zainstalowane prawidłowo.  
→ „3. Instalowanie kasety” na stronie 1
- 5 razy  
Żadne kasety nie są zainstalowane.  
→ „3. Instalowanie kasety” na stronie 1
- 9 razy  
Nie zdjęto materiałów ochronnych.  
→ „2. Usuwanie materiałów opakowaniowych” na stronie 1

#### Kontrolka WŁ. (ON) miga



Przygotowywanie systemu atramentu. Mo że to zająć około 5 do 6 minut. Przejdź do następnej strony.

#### Kontrolki WŁ. (ON) i Alarm migają naprzemiennie 8 razy

Atrament nie został prawidłowo przygotowany.

Naciśnij przycisk **WŁ. (ON)**, aby ponownie uruchomić drukarkę, a następnie ponowić procedurę od miejsca „5. Wlewanie atramentu” na stronie 2.

W pozostałych przypadkach przeczytaj **Podręcznik online**.

## 7. Podłączanie do komputera

Windows



Musisz skonfigurować połączenie na każdym komputerze. Przeprowadź konfigurację na każdym komputerze począwszy od punktu 1.

### 1 Uruchom plik instalacyjny dla metody **A** lub dla metody **B**.

#### **A** Pobieranie z Internetu

- 1 Otwórz przeglądarkę ( itp.) na komputerze.
- 2 Wpisz następujący adres URL w przeglądarce i przejdź do strony internetowej firmy Canon.

<http://ij.start.canon>



- 3 Wybierz przycisk **Konfiguracja**.



- 4 Wprowadź nazwę modelu drukarki i kliknij przycisk **OK**.



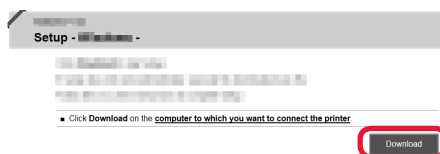
Nazwę modelu można wybrać z listy.

- 5 Kliknij opcję **Konfiguracja**.



Poniżej przedstawiono procedury odnoszące się do systemu operacyjnego Windows. Jeśli używasz komputera z systemem operacyjnym innym niż Windows, postępuj zgodnie z instrukcjami podanymi na ekranie, aby przeprowadzić konfigurację.

- 6 Kliknij polecenie **Pobierz**, aby pobrać plik instalacyjny.



- 7 Uruchom pobrany plik.

**Przejdź do kroku 2 na następnej stronie, aby kontynuować.**

#### **B** Używanie instalacyjnego dysku CD-ROM (tylko system Windows)

##### ■ W przypadku używania systemu Windows 10 lub Windows 8.1:

- 1 Włóż instalacyjny dysk CD-ROM do napędu w komputerze.



- 2 Po pojawieniu się poniższego komunikatu z prawej strony ekranu komputera kliknij go.



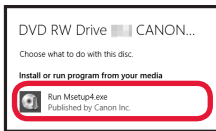
Gdy brak tego komunikatu (lub komunikat zniknie)

1. Na pasku zadań kliknij pozycję **Eksplorator plików (File Explorer)**.



2. Kliknij pozycję **Ten komputer (This PC)** po lewej stronie otwartego okna.
3. Kliknij dwukrotnie ikonę napędu CD-ROM po prawej stronie okna.  
Jeśli zostanie wyświetlona zawartość dysku CD-ROM, kliknij dwukrotnie plik **Msetup4.exe**.
4. Przejdź do kroku 4.

3 Jeśli pojawi się ten ekran, kliknij przycisk **Uruchom Msetup4.exe (Run Msetup4.exe)**.



4 Jeśli pojawi się okno dialogowe **Kontrola konta użytkownika (User Account Control)**, kliknij przycisk **Tak (Yes)**.

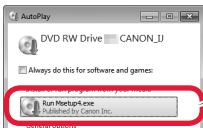
**Przejdź do kroku 2, aby kontynuować.**

#### ■ W przypadku używania systemu Windows 7:


1 Włóż instalacyjny dysk CD-ROM do napędu w komputerze.



2 Gdy zostanie wyświetlony ekran **Autoodtworzenie (AutoPlay)**, kliknij przycisk **Uruchom Msetup4.exe (Run Msetup4.exe)**.



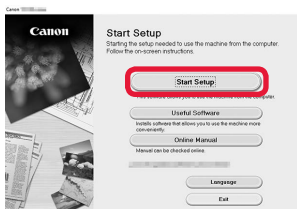
Gdy nie pojawi się ekran **Autoodtworzenie (AutoPlay)**

1. W menu start kliknij opcję **Komputer (Computer)**.
2. Kliknij dwukrotnie ikonę  napędu CD-ROM po prawej stronie otwartego okna. Jeśli zostanie wyświetlona zawartość dysku CD-ROM, kliknij dwukrotnie plik **Msetup4.exe**.

3 Jeśli pojawi się okno dialogowe **Kontrola konta użytkownika (User Account Control)**, kliknij przycisk **Kontynuuj (Continue)**.

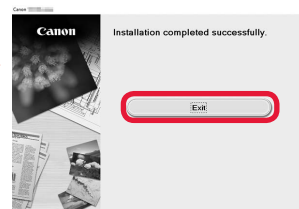
**Przejdź do kroku 2, aby kontynuować.**

2 Kliknij opcję **Rozpocznij konfigurację (Start Setup)**.



Postępuj zgodnie z instrukcjami wyświetlanymi na ekranie, aby przeprowadzić instalację.

Jeśli pojawi się ten ekran, kliknij przycisk **Zakończ (Exit)**.

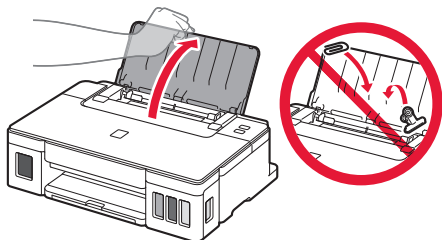


Konfiguracja jest zakończona, gdy kontrolka **WŁ.** (ON) drukarki przestaje migać i zaczyna świecić światłem ciągłym. Od tego momentu można drukować z komputera.

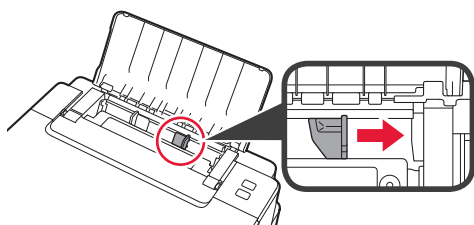




1 Otwórz podpórkę papieru.

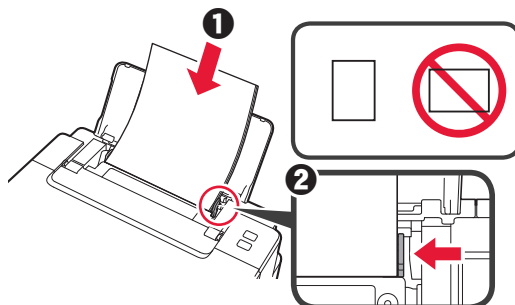


2 Przesuń prawą prowadnicę papieru do końca.



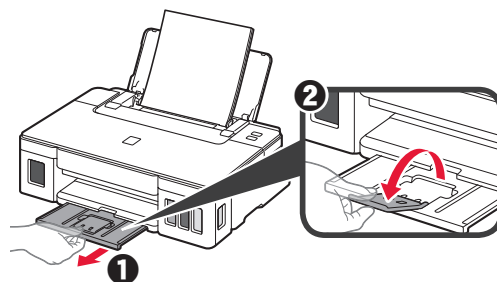
3 1 Włóż papier stroną do zadrukowania skierowaną do góry.

2 Dosuń prawą prowadnicę papieru do brzegu stosu kartek.



4 1 Wyciągnij tacę wyprowadzania papieru.

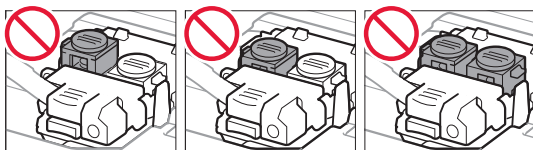
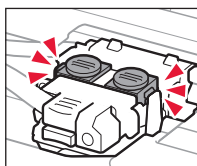
2 Otwórz przedłużenie tacy wyjściowej.



## Przenoszenie drukarki

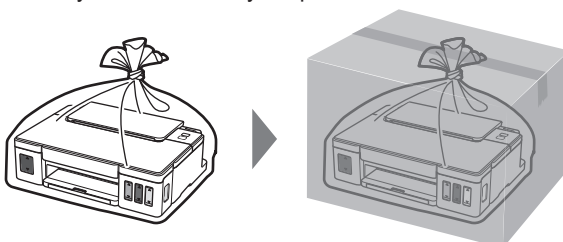
Przestawiając drukarkę w inne miejsce, pamiętaj o poniższych kwestiach. Szczegółowe informacje można znaleźć w dokumencie **Podręcznik online**.

**Sprawdź, czy oba przyciski połączenia są do końca wciśnięte, aby uniknąć wycieku atramentu.**

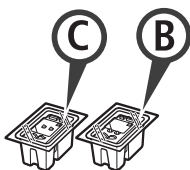


**Spakuj drukarkę do foliowej torby na wypadek wycieku atramentu.**

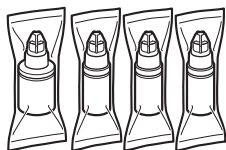
- Zapakuj drukarkę w wytrzymałe pudło, które jest zawsze ustawiane w pozycji horyzontalnej, dnem do dołu. Zastosuj odpowiednią ilość materiału ochronnego, aby zapewnić bezpieczny transport.
- Nie przechylaj drukarki. Atrament może wyciekać.
- Obsługuj ostrożnie i upewnij się, że pudełko pozostanie ustawione płasko i NIE zostanie ustawione do góry nogami ani na boku, ponieważ może to spowodować uszkodzenie drukarki i wyciek atramentu.
- Jeśli transportem drukarki zajmuje się firma spedycyjna, należy poprosić o oznaczenie pudła napisem „TA STRONA DO GÓRY”, aby drukarka znajdowała się cały czas w pozycji spodem do dołu. Opakowanie należy również oznaczyć napisem „OSTROŻNIE”.



## 1. A mellékelt tartozékok ellenőrzése



□ Patron



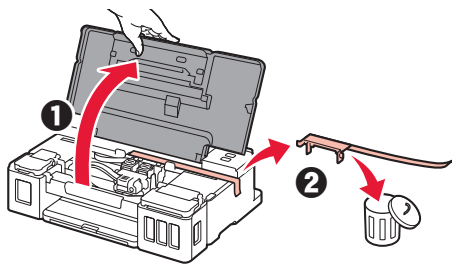
□ Tintaflakon

- Tápkábel
- Telepítő CD-ROM Windows rendszerű PC-hez
- Biztonsági és fontos tudnivalók
- Beüzemelési útmutató (ez a kézikönyv)

## 2. A csomagolóanyag eltávolítása



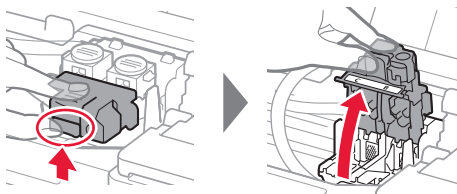
- 1 Távolítsa el a csomagolóanyagot (például a narancssárga szalagot) a nyomtató külső részéről.
- 2 **1** Nyissa fel a felső fedelet.  
**2** Távolítsa el a narancssárga szalagot és a védőanyagot, és dobja ki őket.



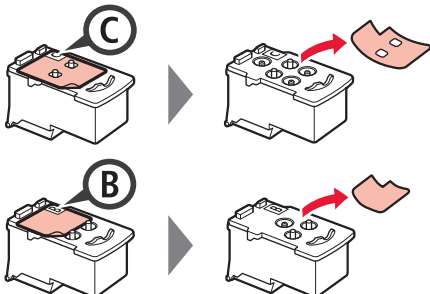
## 3. A patron behelyezése



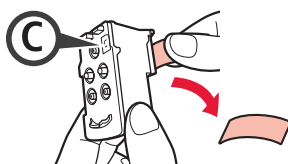
- 1 Nyissa ki a patron zárófedelét.



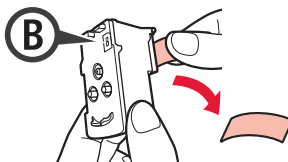
- 2 Vegye ki mindegyik patron a csomagból, és távolítsa el a címkéjét.



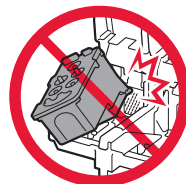
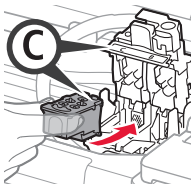
- 3 Távolítsa el a védőszalagot.



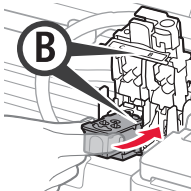
Ne érjen hozzá.



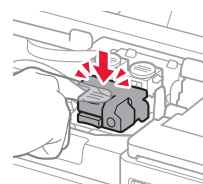
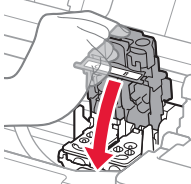
- 4 Tegye be a C (színes) patron a bal oldalra, a B (fekete) patron pedig a jobb oldalra.



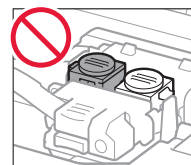
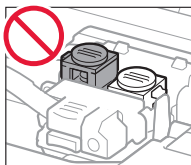
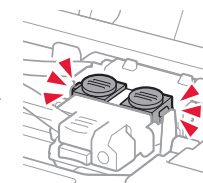
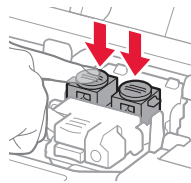
Ne üsse hozzá a környező alkatrészekhez.



- 5 Cszukja be a patron zárófedelét, és nyomja lefelé.



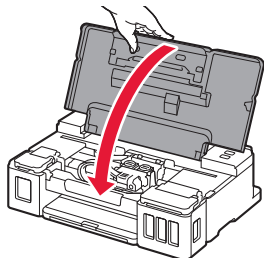
- 6 Nyomja le teljesen mindkét összekötő gombot.



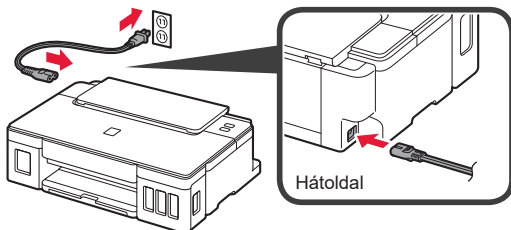
## 4. A nyomtató bekapcsolása



- 1 Csukja le a felső fedelet.

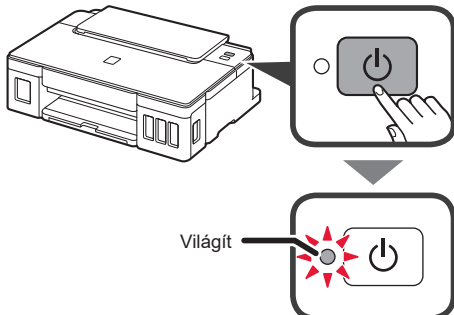


- 2 Csatlakoztassa a tápkábel.

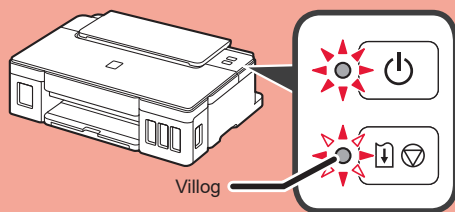


A tápkábel kivételével még ne csatlakoztasson semmilyen kábelt.

- 3 Nyomja meg a **BE (ON)** gombot.



Ha villog a **Riasztás (Alarm)** jelzőfény, akkor a hiba elhárításához olvassa el az „Amikor villog egy jelzőfény” című részt a 3. oldalon.

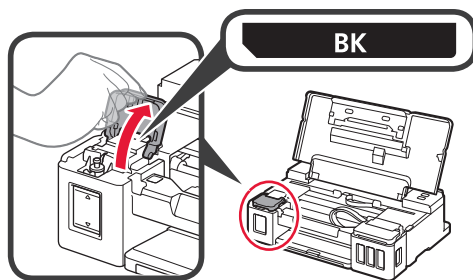


## 5. A tinta betöltése

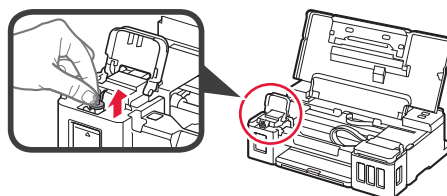


E termék esetén óvatosan kell bánni a tintával. Amikor a tintatartályok tele vannak tintával, a tinta kifolyhat. Ha a tinta a ruhájára vagy egyéb holmijára kerül, előfordulhat, hogy a folt nem távolítható el.

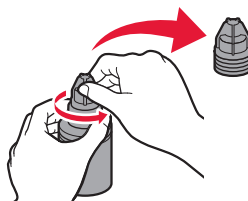
- 1 Nyissa fel a felső fedelet.  
2 Nyissa fel a tintatartályfedelelet.



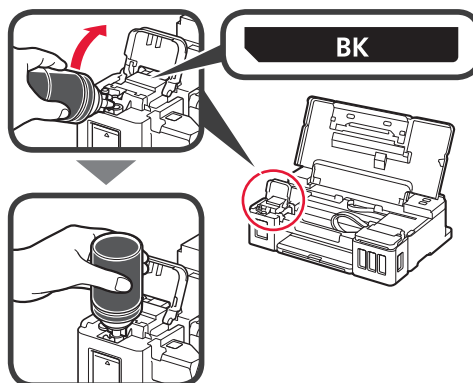
- 3 Fogja meg, majd vegye le a tartálysapkát a tintatartályról.



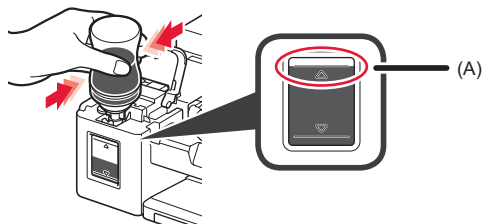
- 4 Tartsa függőlegesen a tintaflakont, és vegye le a flakon sapkáját.



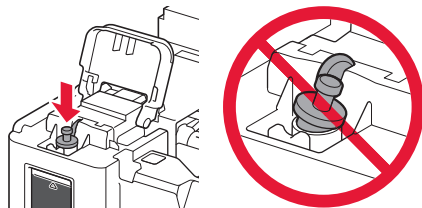
- 5 Illessze a tintaflakon kiöntőcsövét a bemenetbe, és fordítsa fel a tintaflakont.



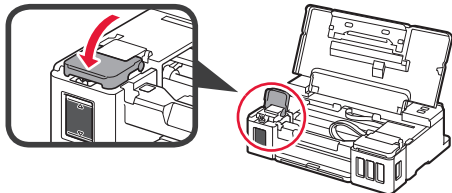
- 6 Öntse bele az összes tintát a tintartályba. Győződjön meg arról, hogy a betöltött tinta elérte a felső korlát vonalát (A).



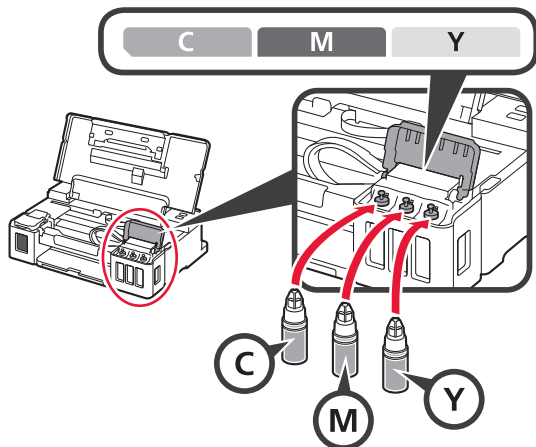
- 7 Tegye vissza megfelelően a tartálysapkát.



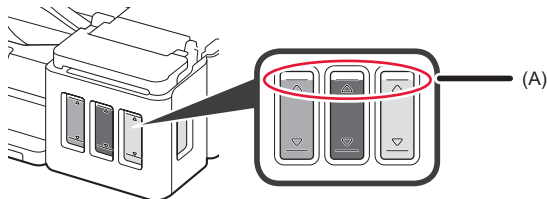
- 8 Csupkja le a tintartályfedelelet.



- 9 A 2–8. lépéseket megismételve öntse bele az összes tintát a jobb oldalon található megfelelő tintartályokba, figyelembe véve a tintartályok címkejét.



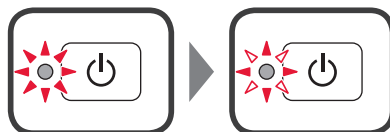
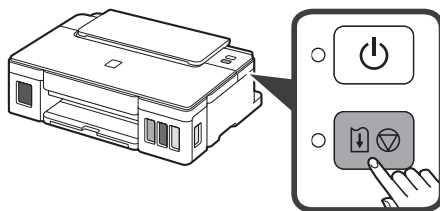
Győződjön meg arról, hogy a betöltött tinta elérte a felső korlát vonalát (A).



- 10 Csupkja le a felső fedelet.

## 6. A tintarendszer előkészítése

- 1 Nyomja meg az **ÚJRAKEZD/MÉGSE (RESUME/CANCEL)** gombot, majd ellenőrizze, hogy a **BE (ON)** jelzőfény viselkedése folyamatos világításról villogásra változott-e.



A tinta előkészítése körülbelül 5–6 percig tart. Folytassa a következő oldalon.

### ? Amikor villog egy jelzőfény

#### Villog a Riasztás (Alarm) jelzőfény



Számolja meg a felvillanásokat, hogy megállapíthassa, mi okozza a problémát.

- 4 alkalommal  
A patronok nincsenek megfelelően behelyezve.  
➔ „3. A patron behelyezése” az 1. oldalon
- 5 alkalommal  
Nincsenek betéve patronok.  
➔ „3. A patron behelyezése” az 1. oldalon
- 9 alkalommal  
A védőanyagok nincsenek eltávolítva.  
➔ „2. A csomagolóanyag eltávolítása” az 1. oldalon

#### Villog a BE (ON) jelzőfény



A tintarendszer előkészítése. Körülbelül 5–6 percig tart. Folytassa a következő oldalon.

#### A BE (ON) jelzőfény és a Riasztás (Alarm) jelzőfény váltakozva, 8 alkalommal felvillan

A tinta nincs megfelelően előkészítve.

A **BE (ON)** gombot megnyomva indítsa újra a nyomtatót, majd hajtsa végre ismét az „5. A tinta betöltése” című szakaszban (2. oldal) ismertetett eljárást.

Minden egyéb esetben kövesse az **Online kézikönyv** útmutatásait.

## 7. Csatlakoztatás számítógéphez


Windows



Minden számítógéphez külön be kell állítani a kapcsolatot. Minden számítógép esetén végezze el a beállítást az 1. lépéstől kezdve.

1 Indítsa el az **A** vagy a **B** módszerhez tartozó telepítőfájlt.

### A Letöltés az internetről

- 1 Nyisson meg egy webböngészőt (  stb.) a számítógépen.
- 2 Írja be a következő URL-címet, és látogasson el a Canon webhelyére.

<http://ij.start.canon>



- 3 Válassza a **Beüzemelés** elemet.



- 4 Írja be a nyomtató modellnevét, és kattintson az **OK** gombra.



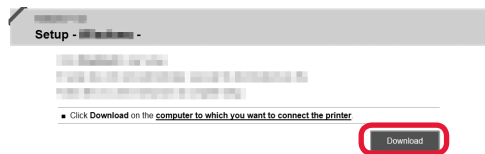
A modellnév kiválasztható a listáról.

- 5 Kattintson a **Beüzemelés** ikonra.



Az alábbiakban a Windows esetén végrehajtandó eljárást ismertetjük. Ha a Windowstól különböző operációs rendszert futtató számítógépet használ, akkor a beállítást a képernyőn megjelenő utasításokat követve hajtsa végre.

- 6 Kattintson a **Letöltés** gombra, és töltsse le a telepítőfájlt.



- 7 Futtassa a letöltött fájlt.

Folytassa a következő oldalon található **2** lépéssel.

### B A telepítő CD-ROM használata (csak Windows esetén)

#### ■ Windows 10 és Windows 8.1 használata esetén:

- 1 Tegye be a telepítő CD-ROM lemezt a számítógépbe.




- 2 Amikor a számítógép képernyőjének jobb oldalán megjelenik a következő üzenet, kattintson rá.



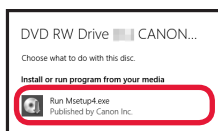
Ha nem jelenik meg (vagy eltűnt) ez az üzenet

1. Kattintson a tálcán a **Fájlkezelő (File Explorer)** ikonra.



2. Kattintson a megnyíló ablak bal oldalán található **Ez a gép (This PC)** elemre.
3. Kattintson duplán az ablak jobb oldalán található  ikonra. Amikor megjelenik a CD-ROM tartalma, kattintson duplán az **Msetup4.exe** fájlra.
4. Folytassa a **4** lépéssel.

3 Ha megjelenik a következő képernyő, kattintson az **Msetup4.exe futtatása (Run Msetup4.exe)** elemre.



4 Ha megjelenik a **Felhasználói fiókok felügyelete (User Account Control)** párbeszédpanel, akkor kattintson az **Igen (Yes)** gombra.

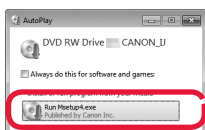
## Folytassa a 2 lépéssel.

### ■ Windows 7 használata esetén:

1 Tegye be a telepítő CD-ROM lemezt a számítógépbe.



2 Amikor megjelenik az **Automatikus lejátszás (AutoPlay)** képernyő, kattintson az **Msetup4.exe futtatása (Run Msetup4.exe)** elemre.



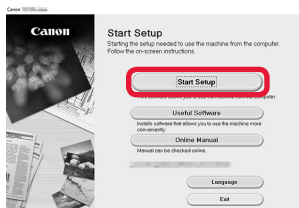
Ha nem jelenik meg az **Automatikus lejátszás (AutoPlay)** képernyő

1. A Start menüből indulva kattintson a **Számítógép (Computer)** elemre.
2. Kattintson duplán a megnyíló ablak jobb oldalán található **CD-ROM** ikonra. Amikor megjelenik a CD-ROM tartalma, kattintson duplán az **Msetup4.exe** fájlra.

3 Ha megjelenik a **Felhasználói fiókok felügyelete (User Account Control)** párbeszédpanel, akkor kattintson a **Folytatás (Continue)** gombra.

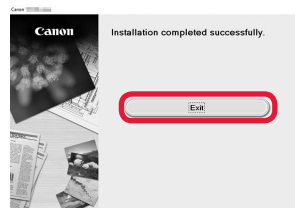
## Folytassa a 2 lépéssel.

2 Kattintson a **Beállítás elindítása (Start Setup)** gombra.



A képernyőn megjelenő utasításokat követve folytassa a beállítást.

Ha megjelenik a következő képernyő, kattintson a **Kilépés (Exit)** gombra.

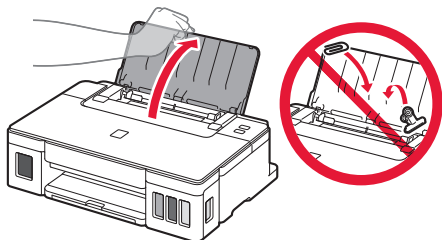


Amikor a nyomtató **BE (ON)** jelzőfénye abbahagyja a villogást, és folyamatosan világít, a beállítás befejeződött. Nyomtathat a számítógépről.

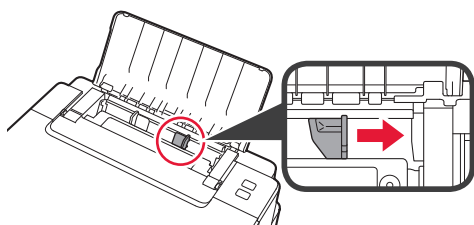




1 Nyissa ki a papírtámaszt.

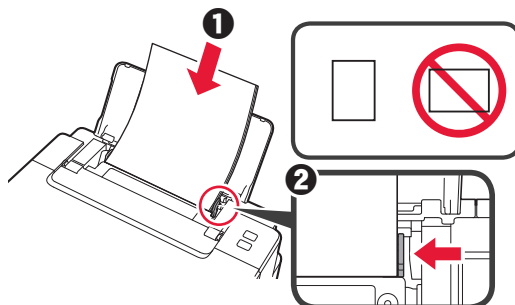


2 Tolja a jobb oldali papírvezetőt a végállásba.



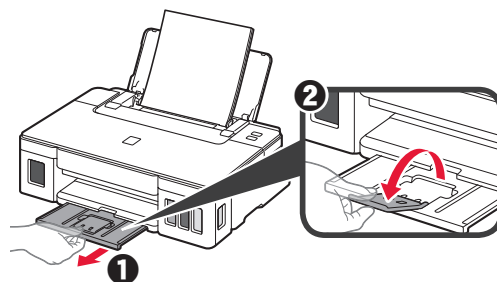
3 1 Tegyen be papírt a nyomtatási oldalával felfelé fordítva.

2 Tolja a jobb oldali papírvezetőt a papírköteg oldalához.



4 1 Húzza ki a papírgyűjtő tálcat.

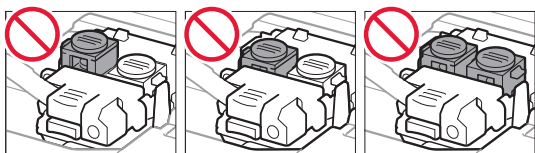
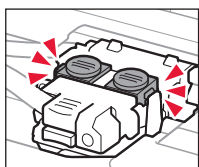
2 Nyissa ki a papírgyűjtő tálca hosszabbítóját.



## A nyomtató szállítása

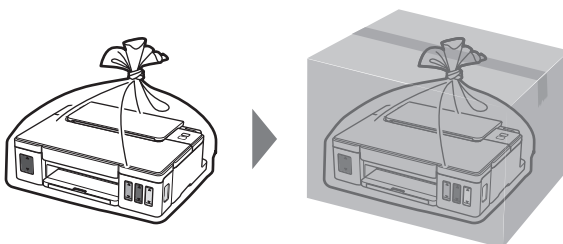
Amikor szállítja a nyomtatót, ügyeljen a következők betartására. A részleteket az **Online kézikönyv** tartalmazza.

A tintaszivárgás elkerülése érdekében ellenőrizze, hogy mindkét összekötő gomb teljesen le van-e nyomva.



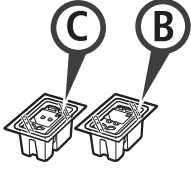
Ha szivárog a tinta, a nyomtatót tegye műanyagzsákba.

- Csomagolja a nyomtatót egy erős dobozba úgy, hogy a nyomtató alsó fele nézzen lefelé; gondoskodjon a biztonságos szállításhoz szükséges elegendő védőanyagról.
- Ne döntse meg a nyomtatót, mert kifolyhat a tinta.
- Óvatosan bánjon vele, és ügyeljen arra, hogy a doboz vízszintes maradjon és NE forduljon fel vagy az oldalára, mert tönkremehet a nyomtató és kifolyhat a tinta a nyomtatóban.
- Ha egy szállítócég végzi a nyomtató szállítását, jelölje meg a nyomtató dobozát „EZ A FELSŐ OLDAL” felirattal, hogy mindig a nyomtató alsó fele nézzen lefelé. Helyezze el a „TÖRÉKENY” vagy az „ÓVATOSAN KEZELENDŐ” feliratot is.

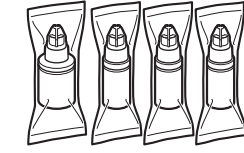




## 1. Pakete Dahil Olan Öğelerin Kontrolü



□ Kartuş



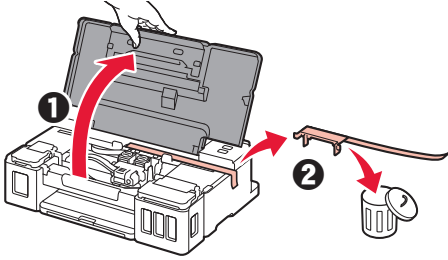
□ Mürekkep şişesi

- Güç kablosu
- Windows PC için Kurulum CD-ROM'u
- Güvenlik ve Önemli Bilgiler
- Başlangıç Kılavuzu (bu el kitabı)

## 2. Koruyucu Malzemeleri Çıkarma



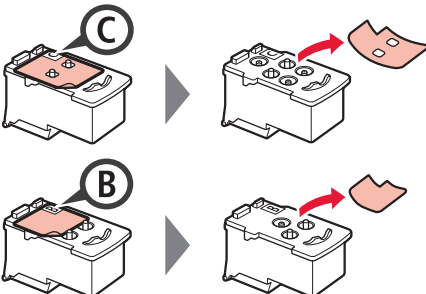
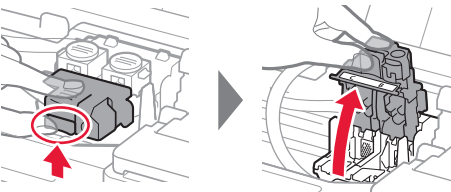
- 1 Yazıcının dış kısmındaki koruyucu malzemeleri (örneğin turuncu bant) çıkarın.
- 2 1 Üst kapağı açın.  
2 Turuncu bandı ve koruyucu malzemeyi çıkarıp atın.



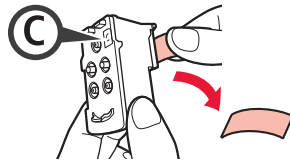
## 3. Kartuşu Takma



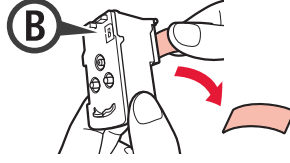
- 1 Kartuş kilit kapağını açın.
- 2 Her bir kartuşu paketten çıkarın ve etiketi kaldırın.



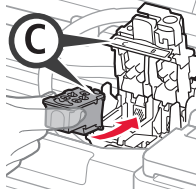
- 3 Koruyucu bandı çıkarın.



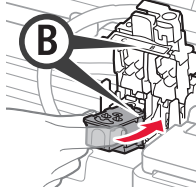
Dokunmayın.



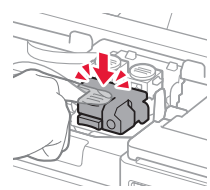
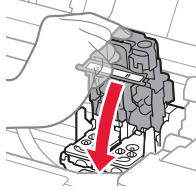
- 4 C (renkli) kartuşu sol, B (siyah) kartuşu sağ tarafa takın.



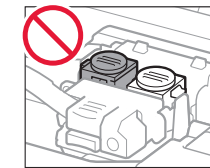
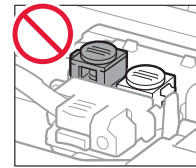
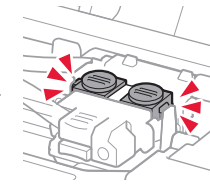
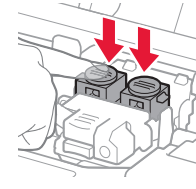
Etrafındaki kısımlara çarpmayın.



- 5 Kartuş kilit kapağını kapatın ve aşağı itin.



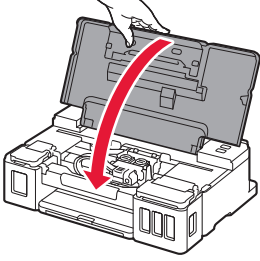
- 6 Ek düğmelerin ikisine de sonuna kadar bastırın.



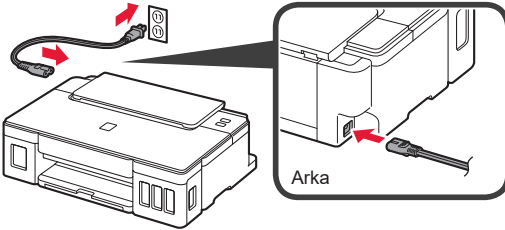
## 4. Yazıcıyı Açma



- 1 Üst kapağı kapatın.

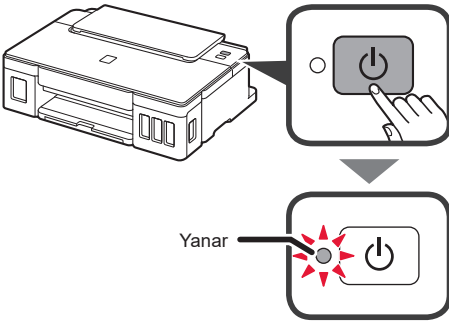


- 2 Güç kablosunu takın.

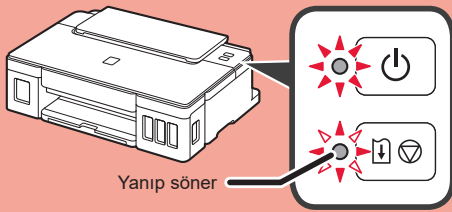


Henüz güç kablosu dışında herhangi bir kablo takmayın.

- 3 Açma (ON) düğmesine basın.



**Alarm** lambası yanıp sönüyorsa, hatayı gidermek için 3. sayfadaki "Lamba yanıp söndüğünde" bölümüne bakın.

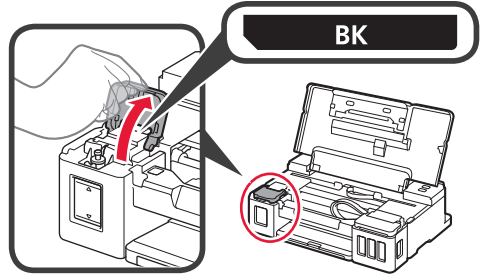


## 5. Mürekkebi Dökme

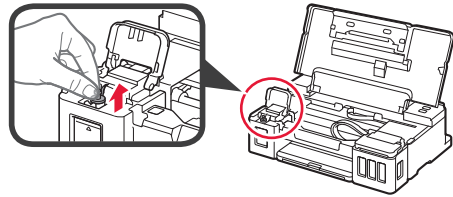


Bu ürün, mürekkebin dikkatli bir şekilde kullanılmasını gerektirir. Mürekkep kutuları mürekkeple doldurulduğunda mürekkep sıçrayabilir. Mürekkep elbiselerinize veya eşyalınıza bulaşırca çıkmayabilir.

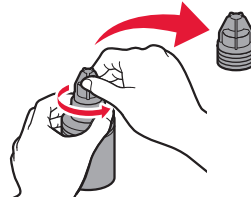
- 1 Üst kapağı açın.  
2 Mürekkep kutusu kapağını açın.



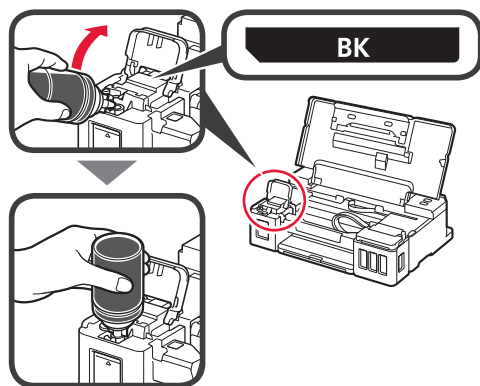
- 3 Mürekkep kutusunun kutu kapağını tutup çıkarın.



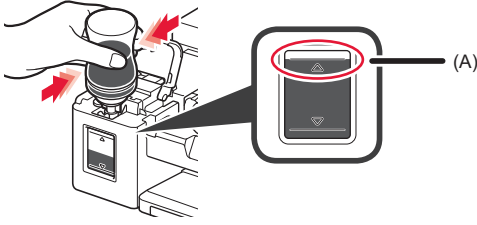
- 4 Mürekkep şişesini dik tutun ve şişe kapağını çıkarın.



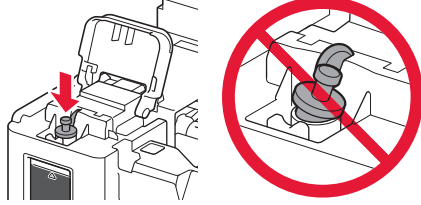
- 5 Mürekkep şişesinin püskürtme ucunu girişe takın ve mürekkep şişesini baş aşağı tutun.



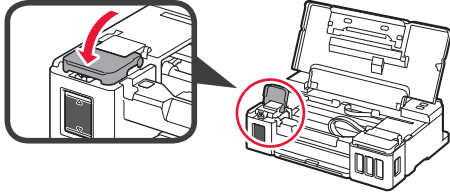
- 6 Tüm mürekkebi mürekkep kutusuna dökün. Mürekkebin üst sınır çizgisine (A) kadar doldurulduğundan emin olun.



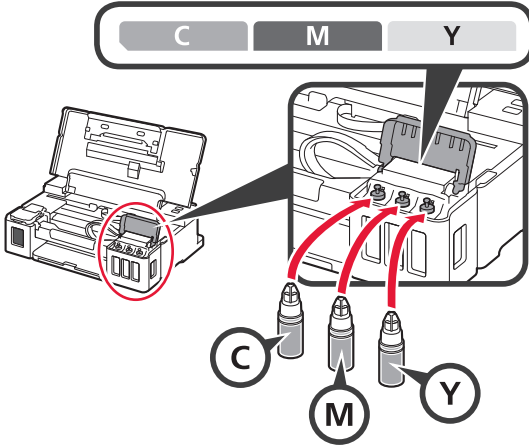
- 7 Kutu kapağını emniyetli bir şekilde yerine geri takın.



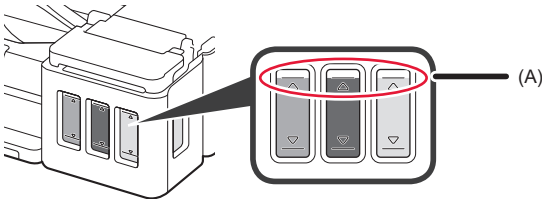
- 8 Mürekkep kutusu kapağını kapatın.



- 9 2 - 8 adımlarını tekrar ederek tüm mürekkebi ilgili etikete göre sağdaki ilgili mürekkep kutularına dökün.



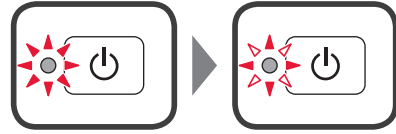
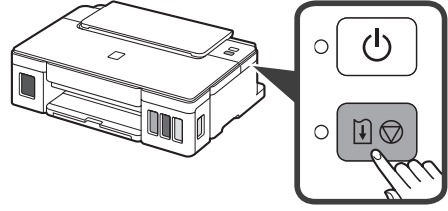
Mürekkebin üst sınır çizgisine (A) kadar doldurulduğundan emin olun.



- 10 Üst kapağı kapatın.

## 6. Mürekkep Sistemi Hazırlanıyor

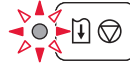
- 1 **SÜRDÜR/İPTAL (RESUME/CANCEL)** düğmesine basın ve ardından **Açma (ON)** lambasının yanma durumundan yanıp sönmeye geçtiğini doğrulayın.



Mürekkep hazırlığı yaklaşık 5 ila 6 dakika alır. Bir sonraki aşamaya geçin.

### ? Lamba yanıp söndüğünde

#### Alarm lambası yanıp sönüyor



Sorunun sebebini bulmak için yanıp sönme sayısını sayın.

- 4 kez  
Kartuşlar doğru takılmamış.  
➔ 1. sayfada "3. Kartuşu Takma"
- 5 kez  
Takılı kartuş yok.  
➔ 1. sayfada "3. Kartuşu Takma"
- 9 kez  
Koruyucu malzemeler çıkarılmamış.  
➔ 1. sayfada "2. Koruyucu Malzemeleri Çıkarma"

#### Açma (ON) lambası yanıp sönüyorsa



Mürekkep sistemi hazırlanıyor. Bu yaklaşık 5 ila 6 dakika sürebilir. Bir sonraki sayfaya geçin.

#### Açma (ON) lambası ve Alarm lambası sırayla 8 kez yanıp sönüyor

Mürekkep normal şekilde hazırlanmamış.

Yazıcıyı yeniden başlatmak için **Açma (ON)** düğmesine basın ve ardından 2. sayfadaki "5. Mürekkep Dökme" bölümünden itibaren işlemi tekrar yapın.

Diğer tüm durumlar için **Çevrimiçi El Kitabı**'na bakın.

## 7. Bilgisayara Bağlanma

Windows



Her bilgisayar için bağlantı kurulumu gerekir. Her bilgisayar için kurulumu 1. adımdan devam edin.

1 **A** veya **B** yöntemi için kurulum dosyasını çalıştırın.

### A İnternet'ten indirme

- 1 Bilgisayarınızda bir web tarayıcısı ( e vb.) açın.
- 2 Aşağıdaki URL'yi girerek Canon web sitesine gidin.

<http://ij.start.canon>



- 3 Kurulum seçeneğini belirleyin.



- 4 Yazıcınızın model adını girin ve **Tamam**'i tıklayın.



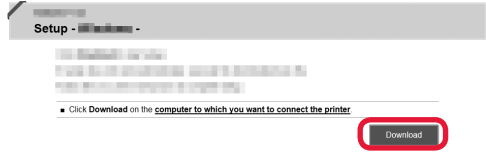
Listeden bir model adı seçebilirsiniz.

- 5 Kurulum'u tıklayın.



Windows prosedürleri aşağıda gösterilmiştir. Kullandığınız bilgisayarda Windows dışında bir işletim sistemi yüklüyse, ekrandaki talimatlar uyarınca kurulumu yapın.

- 6 İndir'i tıklayıp kurulum dosyasını indirin.



- 7 İndirilen dosyayı çalıştırın.

Devam etmek için bir sonraki sayfada yer alan 2 adımına geçin.

### B Kurulum CD-ROM'u Kullanma (Yalnızca Windows)

- Windows 10 veya Windows 8.1 kullanırken:

- 1 Kurulum CD-ROM'u'nu bilgisayarınıza yükleyin.



- 2 Bilgisayar ekranının sağ tarafında aşağıdaki mesaj görüldüğünde mesajı tıklayın.



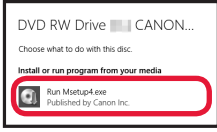
Bu Mesaj Görüntülenmediğinde (veya Kaybolduğunda)

1. Görev çubuğundaki **Dosya Gezgini (File Explorer)** seçeneğini tıklayın.



2. Açılan pencerenin sol tarafındaki **Bu PC (This PC)**'yi tıklayın.
3. Pencerenin sağ tarafındaki **CD-ROM** simgesini tıklayın. CD-ROM'un içindekiler görüntülenirse **Msetup4.exe** ögesini çift tıklayın.
4. 4. adımına geçin.

3 Aşağıdaki ekran görüntülenirse, **Msetup4.exe Çalıştır (Run Msetup4.exe)** seçeneğini tıklayın.



4 **Kullanıcı Hesabı Denetimi (User Account Control)** iletişim kutusu görüntülenirse **Evet (Yes)**'i tıklayın.

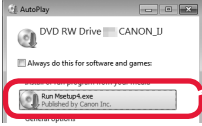
Devam etmek için 2. adıma geçin.

#### ■ Windows 7 kullanırken:


1 Kurulum CD-ROM'u'nu bilgisayarınıza yükleyin.



2 **Otomatik Kullan (AutoPlay)** ekranı görüntülediğinde **Msetup4.exe Çalıştır (Run Msetup4.exe)** seçeneğini tıklayın.



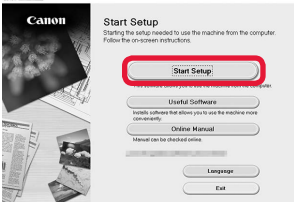
**Otomatik Kullan (AutoPlay) Ekranı Görüntülenmediğinde**

1. Başlat menüsünden **Bilgisayar (Computer)** seçeneğini tıklayın.
2. Açılan pencerenin sağ tarafındaki  CD-ROM simgesini tıklayın.  
CD-ROM'un içindekiler görüntülenirse **Msetup4.exe** ögesini çift tıklayın.

3 **Kullanıcı Hesabı Denetimi (User Account Control)** iletişim kutusu görüntülenirse **Devam (Continue)** seçeneğini tıklayın.

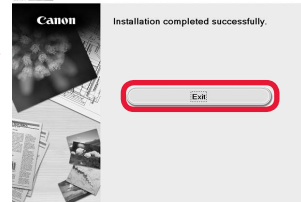
Devam etmek için 2. adıma geçin.

2 Kurulumu başlat (**Start Setup**) ögesini tıklayın.



**Kurulumu devam etmek için ekrandaki yönergeleri izleyin.**

Aşağıdaki ekran görüntülenirse **Çıkış (Exit)** ögesini tıklayın.

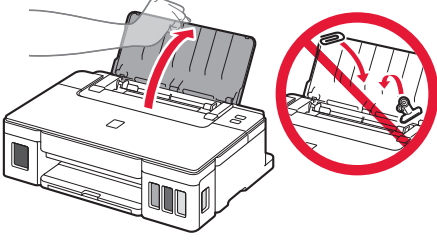


Yazıcıdaki **Açma (ON)** lambasının yanıp sönmeye durduğunda ve yanık durumda kaldığında kurulum tamamlanır. Bilgisayarınızdan yazdırma yapabilirsiniz.

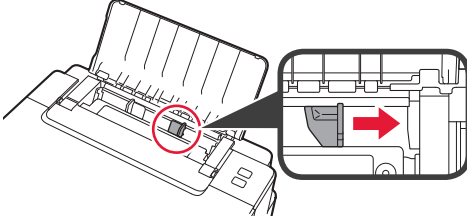
## Kağıt Yükleme



1 Kağıt desteğini açın.

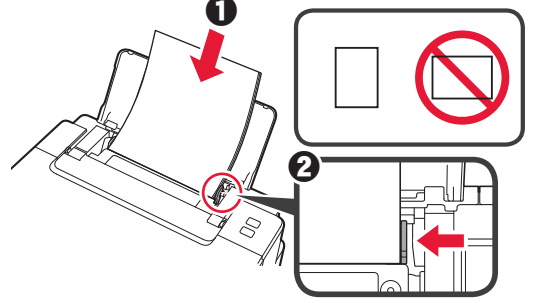


2 Sağ kağıt kılavuzunu sonuna kadar kaydırın.



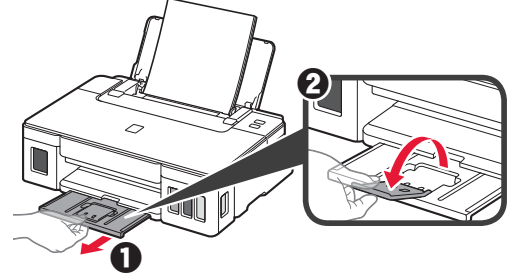
3 1 Yazdırılan taraf yukarı bakacak şekilde kağıt yükleyin.

2 Sağ kağıt kılavuzunu kaydırarak kağıt yığınının yan tarafına hizalayın.



4 1 Kağıt çıkış tepsisini dışarı çekin.

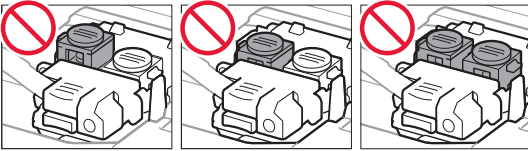
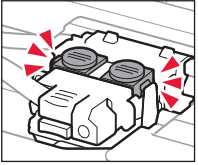
2 Çıkış tepsi uzantısını açın.



## Yazıcınızı Taşımak

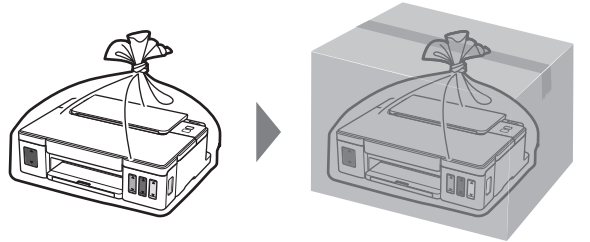
Yazıcıyı başka bir yere taşırken aşağıdakilere dikkat edin. Ayrıntılar için **Çevrimiçi El Kitabı** belgesini kontrol edin.

Mürekkebin akmasını engellemek için, her iki ek düğmenin de tamamen basılı olduğunu kontrol edin.



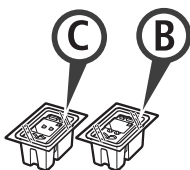
Mürekkep akıyorsa, yazıcıyı plastik bir poşetle paketleyin.

- Güvenli taşınması için yazıcıyı alt tarafı aşağı bakacak şekilde sağlam bir kutuya koyun ve yeterli miktarda koruyucu malzeme kullanın.
- Yazıcıyı eğmeyin. Mürekkep sızabilir.
- Lütfen dikkatli bir şekilde taşıyın ve kutunun düz tutulduğundan ve baş aşağı veya yana doğru çevrilmediğinden emin olun; aksi halde yazıcı hasar görebilir ve yazıcıdaki mürekkep sızabilir.
- Taşıma görevlisi yazıcıyı taşırken, kutunun üst tarafına "ÜST TARAF" yazıldığından emin olun, bu sayede yazıcının alt tarafı üste gelecek şekilde konmadığından emin olabilirsiniz. Ayrıca "KIRILCAK EŞYA" veya "DİKKATLİ TAŞIYIN" yazın.

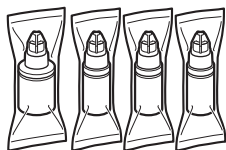




## 1. Verificarea articolelor incluse



□ Cartuș



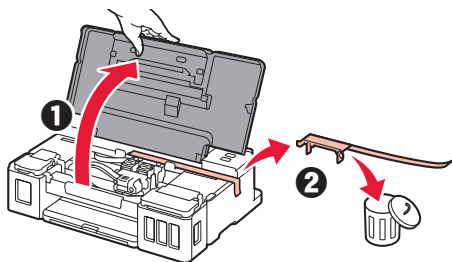
□ Sticlă de cerneală

- Cablu de alimentare
- CD-ROM de instalare pentru Windows PC
- Informații cu privire la siguranță și alte informații importante
- Ghid de inițiere (acest manual)

## 2. Îndepărtarea materialelor de ambalare



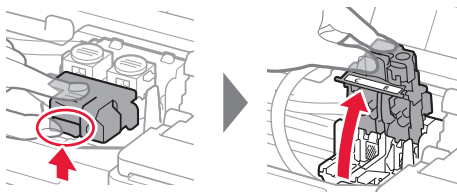
- 1 Îndepărtați materialele de ambalare (precum banda portocalie) de pe partea exterioră a imprimantei.
- 2 **1** Deschideți capacul superior.  
**2** Îndepărtați banda portocalie și materialul de protecție și aruncați-le.



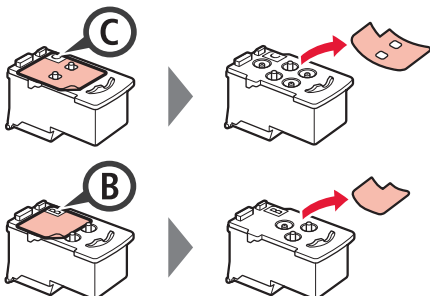
## 3. Instalarea cartușului



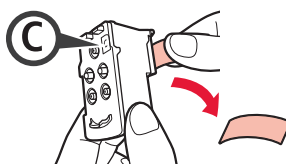
- 1 Deschideți capacul de blocare a cartușului/cartușelor.



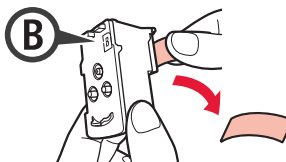
- 2 Scoateți fiecare cartuș din ambalaj și îndepărtați eticheta.



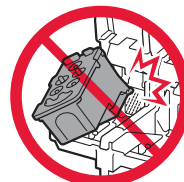
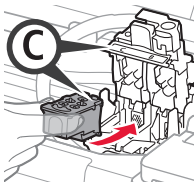
- 3 Îndepărtați banda de protecție.



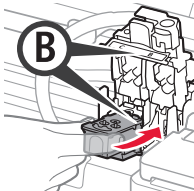
Nu atingeți.



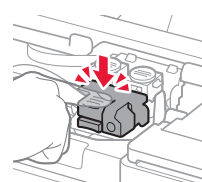
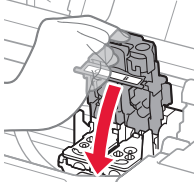
- 4 Introduceți cartușul C (color) în partea stângă și cartușul B (negru) în partea dreaptă.



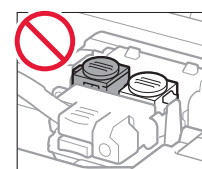
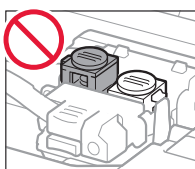
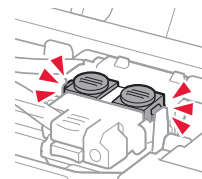
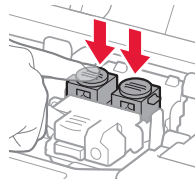
Nu îl loviți de componentele din jur.



- 5 Închideți capacul de blocare a cartușului/cartușelor și împingeți-l în jos.



- 6 Apăsați în jos complet ambele butoane de îmbinare.

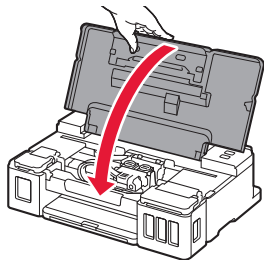




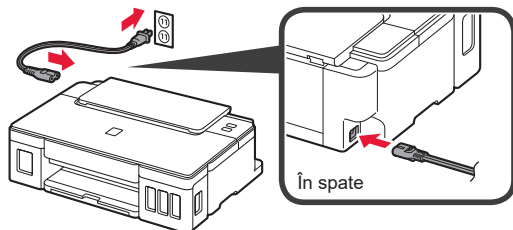
## 4. Pornirea imprimantei



- 1 Închideți capacul superior.

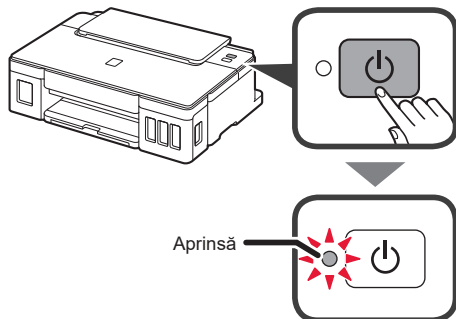


- 2 Conectați cablul de alimentare.

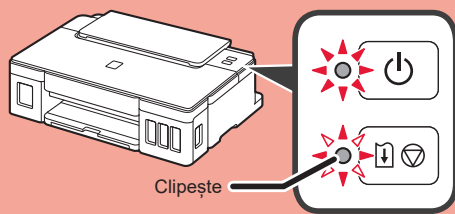


Deocamdată nu conectați niciun cablu în afară de cablul de alimentare.

- 3 Apăsați butonul **ACTIVARE (ON)**.



Dacă lampa **Alarmă (Alarm)** clipește, consultați „Când o lampă clipește” la pagina 3 pentru a remedia eroarea.

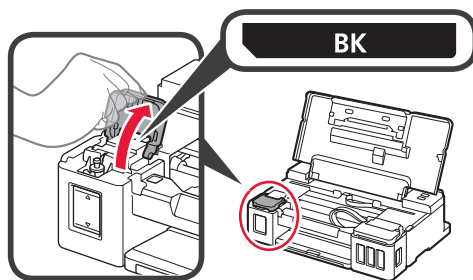


## 5. Turnarea cernelei

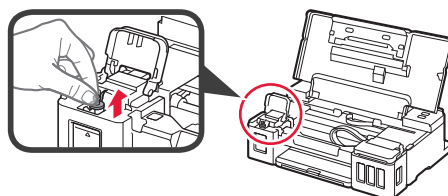


Acest produs necesită o manevrare atentă a cernelei. Pot apărea stropi de cerneală atunci când rezervoarele de cerneală sunt umplute. Dacă hainele sau obiectele dvs. sunt pătate cu cerneală, este posibil ca acestea să nu poată fi îndepărtată.

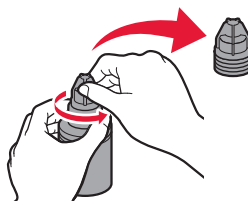
- 1 Deschideți capacul superior.
- 2 Deschideți capacul rezervorului de cerneală.



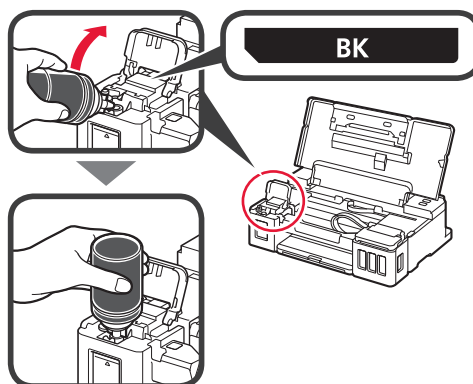
- 3 Prindeți și îndepărtați capacul rezervorului de pe rezervorul de cerneală.



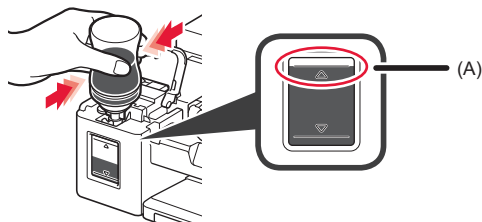
- 4 Țineți sticla de cerneală în poziție verticală și îndepărtați capacul sticlei.



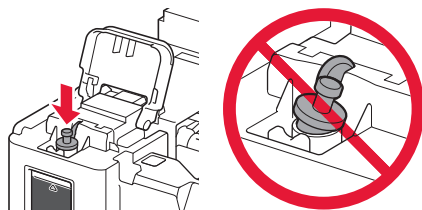
- 5 Introduceți duza sticlei de cerneală în orificiul de umplere și așezați sticla de cerneală în poziție răsturnată.



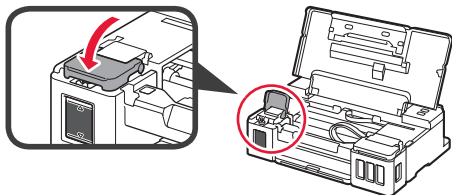
- 6 Turnați toată cerneala în rezervorul de cerneală. Confirmați că s-a efectuat umplerea cu cerneală până la linia limitei superioare (A).



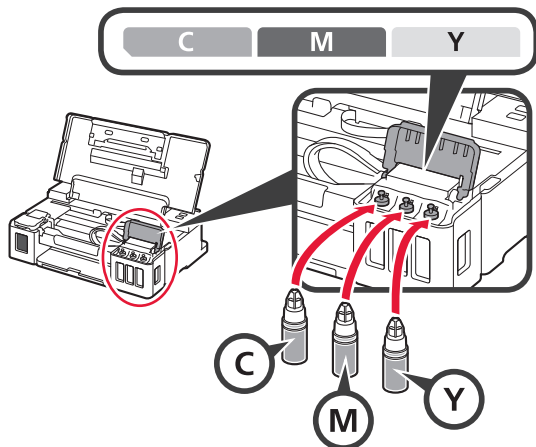
- 7 Așezați la loc în siguranță capacul rezervorului.



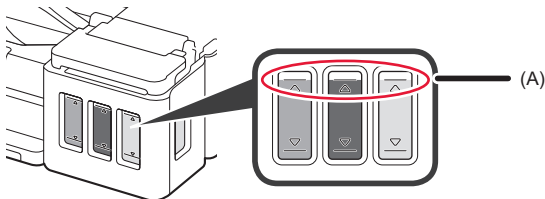
- 8 Închideți capacul rezervorului de cerneală.



- 9 Repetați pașii de la 2 la 8 pentru a turna toată cerneala în rezervoarele de cerneală corespunzătoare din partea dreaptă, conform cu eticheta.



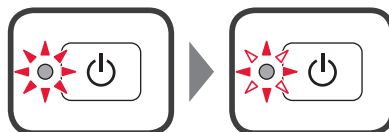
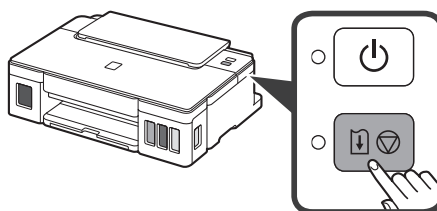
Confirmați că s-a efectuat umplerea cu cerneală până la linia limitei superioare (A).



- 10 Închideți capacul superior.

## 6. Pregătirea sistemului de cerneală

- 1 Apăsați butonul **RELUARE/REVOCARE (RESUME/CANCEL)**, apoi verificați dacă lampa **ACTIVARE (ON)** a trecut de la aprinsă la intermitentă.



Pregătirea cernelii durează aproximativ 5 - 6 minute. Continuați la pagina următoare.

### ? Când o lampă clipește

#### Lampa Alarmă (Alarm) clipește



Numărați de câte ori clipește pentru a determina cauza problemei.

- De 4 ori  
Cartușele nu sunt instalate corect.  
➔ „3. Instalarea cartușului” la pagina 1
- De 5 ori  
Nu este instalat niciun cartuș.  
➔ „3. Instalarea cartușului” la pagina 1
- De 9 ori  
Materialele de protecție nu sunt îndepărtate.  
➔ „2. Îndepărtarea materialelor de ambalare” la pagina 1

#### Lampa ACTIVARE (ON) clipește



Pregătirea sistemului de cerneală. Aceasta poate dura aproximativ 5 - 6 minute. Continuați la pagina următoare.

#### Lampa ACTIVARE (ON) și lampa Alarmă (Alarm) clipește alternativ de 8 ori

Cerneala nu este pregătită în mod normal.

Apăsați butonul **ACTIVARE (ON)** pentru a reporni imprimanta și apoi efectuați din nou procedura din secțiunea „5. Turnarea cernelii” de la pagina 2.

Pentru toate celelalte situații, consultați **Manual online**.

## 7. Conectarea la computer

Windows



Aveți nevoie de configurarea conexiunii pentru fiecare computer. Efectuați configurarea de la pasul 1 pentru fiecare computer.

1 Porniți fișierul de configurare pentru metoda **A** sau metoda **B**.

### A Descărcarea de pe Internet

- 1 Deschideți un browser web ( etc.) pe computer.
- 2 Introduceți următorul URL și accesați site-ul web Canon.

<http://ij.start.canon>



- 3 Selectați **Configurarea**.



- 4 Introduceți numele modelului de imprimantă și faceți clic pe **OK**.



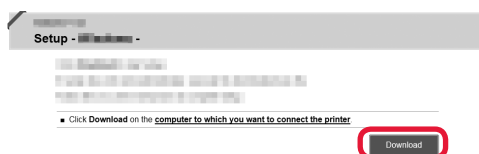
Puteți alege numele unui model din listă.

- 5 Faceți clic pe **Configurare**.



Procedurile pentru Windows sunt prezentate mai jos. Dacă utilizați un computer cu un sistem de operare diferit de Windows, efectuați configurarea conform cu instrucțiunile de pe ecran.

- 6 Faceți clic pe **Descărcare** și descărcați fișierul de configurare.



- 7 Executați fișierul descărcat.

Treceți la pasul 2 de la pagina următoare pentru a continua.

### B Utilizarea CD-ROM-ului de instalare (doar Windows)

#### ■ Când utilizați Windows 10 sau Windows 8.1:

- 1 Introduceți CD-ROM-ul de instalare în computer.



- 2 Când următorul mesaj apare în partea dreaptă a ecranului computerului, faceți clic pe el.



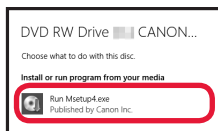
Atunci când nu apare acest mesaj (sau când a dispărut)

1. Faceți clic pe **Explorer (File Explorer)** de pe bara de activități.



2. Faceți clic pe **Acest PC (This PC)** în partea stângă a ferestrei deschise.
3. Faceți dublu clic pe pictograma CD-ROM-ului din partea dreaptă a ferestrei. Dacă se afișează conținutul CD-ROM-ului, faceți dublu clic pe **Msetup4.exe**.
4. Treceți la pasul 4.

3 Dacă apare următorul ecran, faceți clic pe **Executare Msetup4.exe (Run Msetup4.exe)**.



4 Dacă apare caseta de dialog **Control cont de utilizator (User Account Control)**, faceți clic pe **Da (Yes)**.

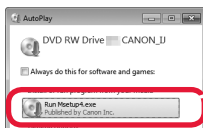
**Treceți la pasul 2 pentru a continua.**

### ■ Când utilizați Windows 7:


1 Introduceți CD-ROM-ul de instalare în computer.



2 Dacă apare ecranul **AutoPlay**, faceți clic pe **Executare Msetup4.exe (Run Msetup4.exe)**.



Când ecranul **AutoPlay** nu apare

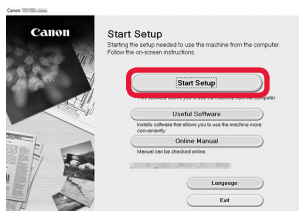
1. Faceți clic pe **Computer** din meniul de pornire.
2. Faceți dublu clic pe pictograma CD-ROM-ului  din partea dreaptă a ferestrei deschise. Dacă se afișează conținutul CD-ROM-ului, faceți dublu clic pe **Msetup4.exe**.

3 Dacă apare caseta de dialog **Control cont de utilizator (User Account Control)**, faceți clic pe **Continuare (Continue)**.

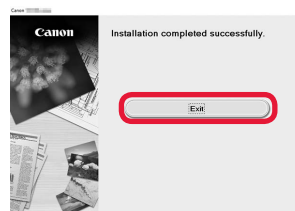
**Treceți la pasul 2 pentru a continua.**

2 Faceți clic pe **Începere configurare (Start Setup)**.

Dacă apare următorul ecran, faceți clic pe **leșire (Exit)**.



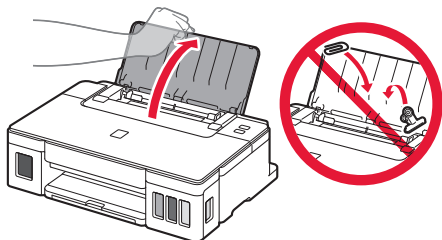
**Urmați instrucțiunile de pe ecran pentru a continua cu configurarea.**



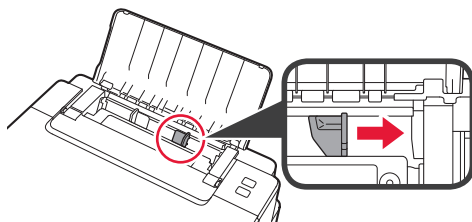
**Configurarea este finalizată când lampa ACTIVARE (ON) a imprimantei nu mai clipește și rămâne aprinsă. Puteți imprima de pe computer.**



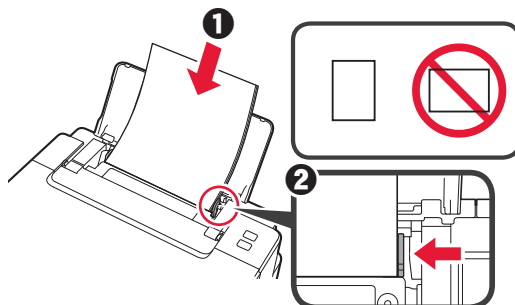
1 Deschideți suportul pentru hârtie.



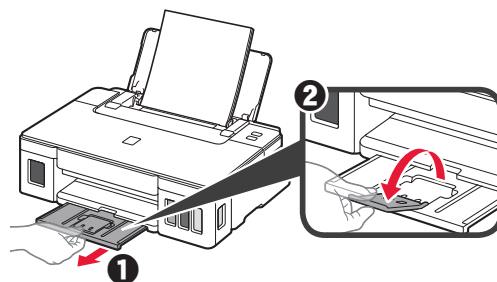
2 Glisați ghidajul pentru hârtie din dreapta până la capăt.



3 1 Încărcați hârtia cu partea imprimabilă orientată în sus.  
2 Glisați ghidajul pentru hârtie din dreapta pentru a-l alinia cu latura teancului de hârtie.



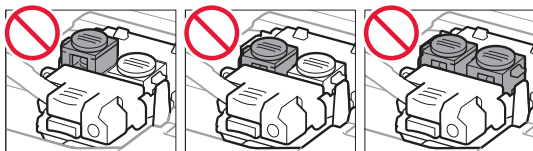
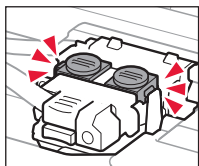
4 1 Trageți tava de ieșire a hârtiei în afară.  
2 Deschideți extensia tăvii de ieșire.



## Transportul imprimantei

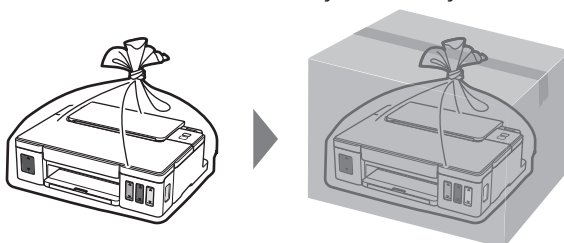
Când schimbați locul de amplasare a imprimantei, asigurați-vă de următoarele. Pentru detalii, consultați **Manual online**.

Verificați dacă ambele butoane de îmbinare sunt apăstate în jos complet, pentru a evita scurgerile de cerneală.

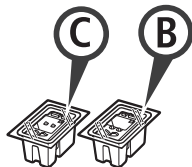


În cazul în care există scurgeri de cerneală, împachetați imprimanta într-o pungă de plastic.

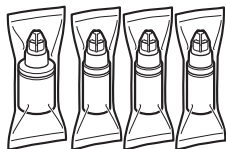
- Ambalați imprimanta într-o cutie solidă astfel încât să fie așezată cu baza în jos, utilizând material de protecție suficient pentru a asigura transportul în siguranță.
- Nu înclinați imprimanta. Se poate scurge cerneala.
- Manevrați cu grijă și asigurați-vă că cutia rămâne plană și NU întoarsă cu fața în jos sau pe laterale, deoarece imprimanta se poate deteriora și cerneala din imprimantă se poate scurge.
- Când un agent de livrări manevrează transportul imprimantei, cutia acesteia trebuie să fie marcată „CU PARTEA ACEASTA ÎN SUS” pentru a menține imprimanta cu baza în jos. De asemenea, marcați cu „FRAGIL” sau „MANEVRAȚI CU ATENȚIE”.



## 1. Проверка на съдържанието на доставката



□ Касета



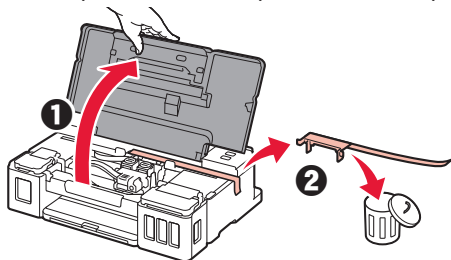
□ Бутилка с мастило

- Захранващ кабел
- Инсталационен компактдиск за компютър с Windows
- Информация за безопасността и важна информация
- Ръководство за начално запознаване (това ръководство)

## 2. Отстраняване на опаковъчните материали



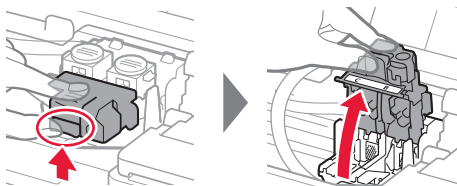
- 1 Отстранете опаковъчните материали (като например оранжевата лепенка) от външната страна на принтера.
- 2 **1** Отворете горния капак.  
**2** Отстранете оранжевата лепенка и предпазния материал и ги изхвърлете.



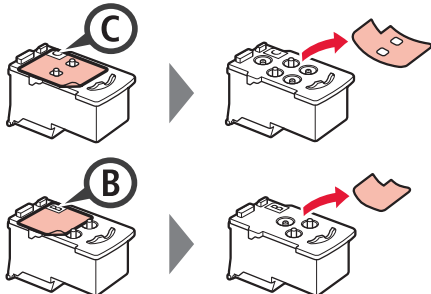
## 3. Поставяне на касетата



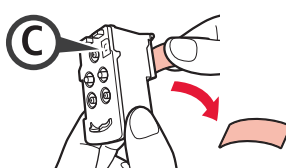
- 1 Отворете застопоряващия капак за касетите.



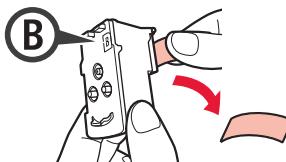
- 2 Извадете всяка касета от опаковката и отстранете етикета.



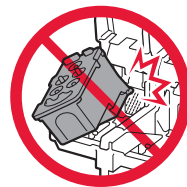
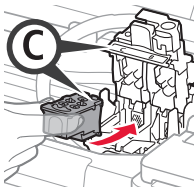
- 3 Отстранете предпазната лепенка.



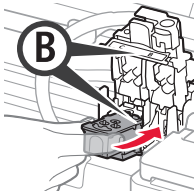
Не докосвайте.



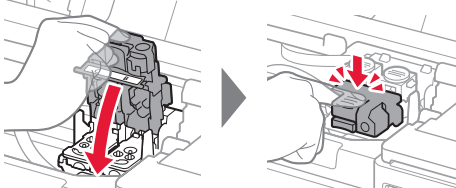
- 4 Поставете касетата C (цветна) отляво и касетата B (черна) отдясно.



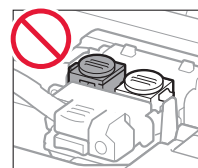
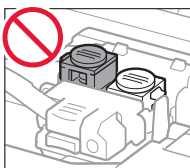
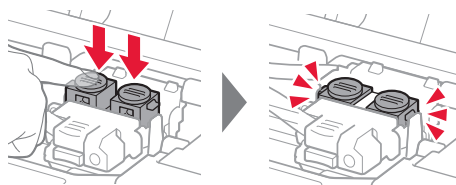
Не я удряйте в частите наоколо.



- 5 Затворете застопоряващия капак за касетите и го натиснете надолу.



- 6 Натиснете докрай надолу двата бутона за свързване.

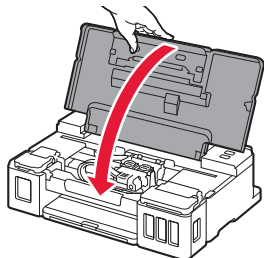




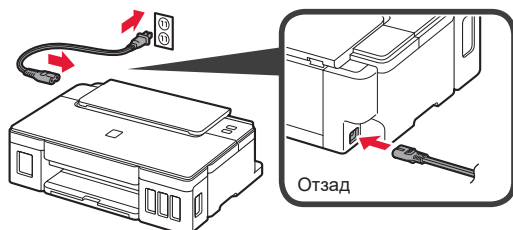
## 4. Включване на принтера



- 1 Затворете горния капак.

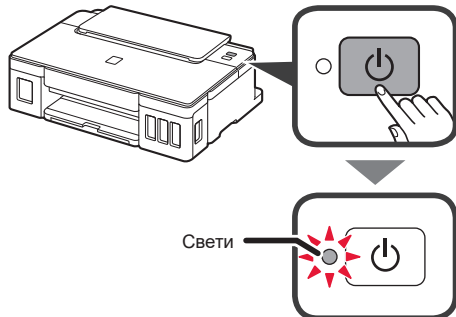


- 2 Свържете захранващия кабел.

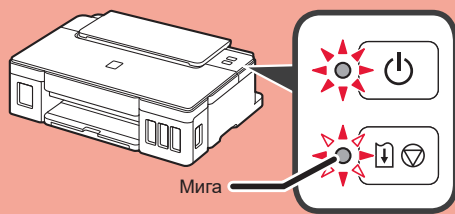


На този етап не свързвайте никакви кабели освен захранващия.

- 3 Натиснете бутона **Включване (ON)**.



Ако лампата **Аларма (Alarm)** мига, вижте "Когато мига лампа" на страница 3, за да отстраните грешката.

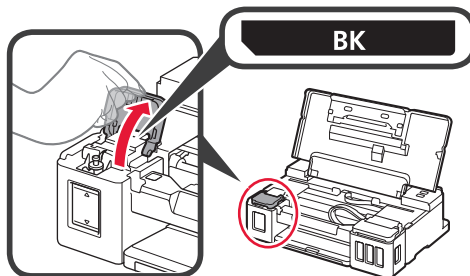


## 5. Наливане на мастило

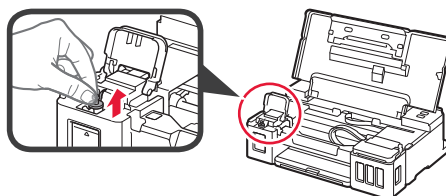


Този продукт изисква внимателно боравене с мастилото. То може да се разпръска при напълване на резервоарите за мастило. Ако по дрехите или вещите ви попадне мастило, може да не се изчисти.

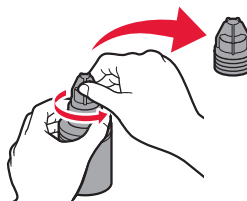
- 1 Отворете горния капак.  
2 Отворете капачката на резервоара за мастило.



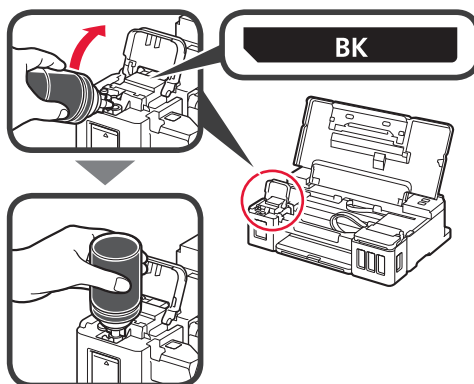
- 3 Хванете и отстранете капачката на резервоара за мастило.



- 4 Дръжте бутилката с мастило изправена и отстранете капачката на бутилката.



- 5 Поставете накрайника на бутилката с мастило във входния отвор и обърнете бутилката с мастило с дъното нагоре.

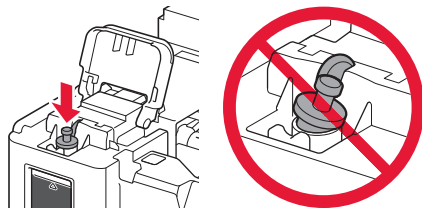




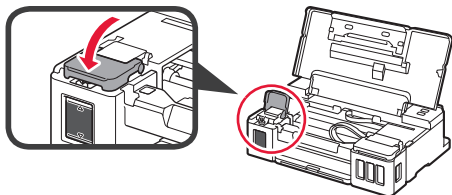
- 6 Налейте цялото количество мастило в резервоара за мастило. Уверете се, че мастилото е напълнено до горната ограничителна линия (A).



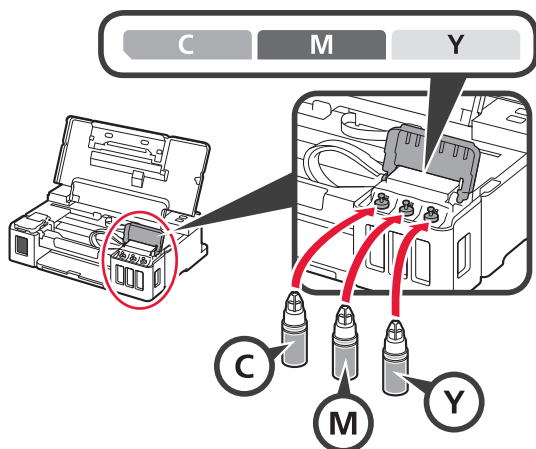
- 7 Поставете добре капачката на резервоара обратно на мястото ѝ.



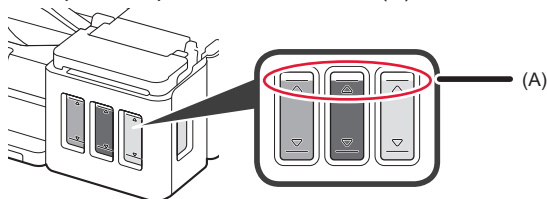
- 8 Затворете капака на резервоара за мастило.



- 9 Повторете стъпки от 2 до 8, за да налеее цялото количество мастило в съответните резервоари за мастило отъясно според етикета.



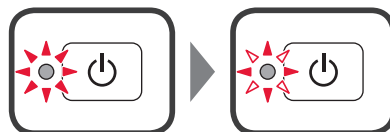
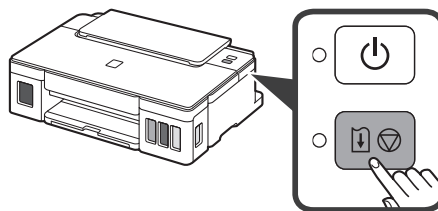
Уверете се, че мастилото е напълнено до горната ограничителна линия (A).



- 10 Затворете горния капак.

## 6. Подготовка на системата с мастило

- 1 Натиснете бутона **ПРОДЪЛЖАВАНЕ/ОТМЯНА (RESUME/CANCEL)** и след това потвърдете, че лампата **Включване (ON)** е преминала от светене към мигане.



Подготовката на мастилото отнема около 5 до 6 минути. Преминете на следващата страница.

### ? Когато мига лампа

#### Лампата Аларма (Alarm) мига



Пребройте премигванията, за да определите причината за проблема.

- 4 пъти  
Касетите не са поставени правилно.  
➔ "3. Поставяне на касетата" на страница 1
- 5 пъти  
Не са поставени касети.  
➔ "3. Поставяне на касетата" на страница 1
- 9 пъти  
Предпазните материали не са отстранени.  
➔ "2. Отстраняване на опаковъчните материали" на страница 1

#### Лампата Включване (ON) мига



Извършва се подготовка на мастилената система. Това може да отнеме около 5 до 6 минути. Преминете на следващата страница.

#### Лампите Включване (ON) и Аларма (Alarm) мигат 8 пъти, като се редуват

Мастилото не е подготвено нормално. Натиснете бутона **Включване (ON)**, за да рестартирате принтера, и след това повторете процедурата от "5. Наливане на мастило" на страница 2.

За всички други случаи вижте **Онлайн ръководство**.

## 7. Свързване към компютър

Windows



Трябва да настроите връзка за всеки компютър. Започнете с настройката от стъпка 1 за всеки компютър.

1 Стартирайте файла за настройка за метод **A** или метод **B**.

### A Изтегляне от интернет

- 1 Отворете уеб браузър ( и др.) на компютъра.
- 2 Въведете следния URL адрес и влезте в уебсайта на Canon.

`http://ij.start.canon`



- 3 Изберете **Настройка**.



- 4 Въведете името на модела на принтера и щракнете върху **ОК**.



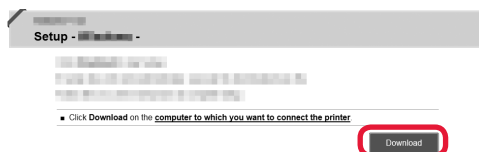
Можете да изберете име на модела от списъка.

- 5 Щракнете върху **Настройка**.



Процедурите за Windows са показани по-долу. Ако използвате компютър с операционна система, различна от Windows, извършете настройката според инструкциите на екрана.

- 6 Щракнете върху **Изтегли** и изтеглете файла за настройка.



- 7 Изпълнете изтегления файл.

Преминете към стъпка 2 на следващата страница, за да продължите.

### B Използване на инсталационния компактдиск (само за Windows)

#### ■ Ако използвате Windows 10 или Windows 8.1:

- 1 Заредете инсталационния компактдиск в компютъра.



- 2 Когато в дясната страна на компютърния екран се покаже следното съобщение, щракнете върху него.



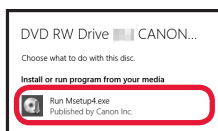
Ако това съобщение не се показва (или е изчезнало)

1. Щракнете върху **Файлов мениджър (File Explorer)** в лентата на задачите.



2. Щракнете върху **Този компютър (This PC)** в лявата страна на отворения прозорец.
3. Щракнете двукратно върху иконата на компактдиска в дясната страна на прозореца. Ако се покаже съдържанието на компактдиска, щракнете двукратно върху **Msetup4.exe**.
4. Преминете към стъпка 4.

- 3 Ако се покаже следният екран, щракнете върху **Изпълни Msetup4.exe (Run Msetup4.exe)**.



- 4 Ако се покаже диалоговият прозорец **Управление на потребителски акаунти (User Account Control)**, щракнете върху **Да (Yes)**.

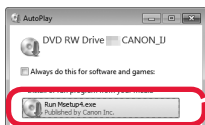
Преминете към стъпка 2, за да продължите.

#### ■ Ако използвате Windows 7:

- 1 Заредете инсталационния компактдиск в компютъра.



- 2 Когато се покаже екранът **Автоматично изпълнение (AutoPlay)**, щракнете върху **Изпълни Msetup4.exe (Run Msetup4.exe)**.



Ако не се покаже екранът **Автоматично изпълнение (AutoPlay)**

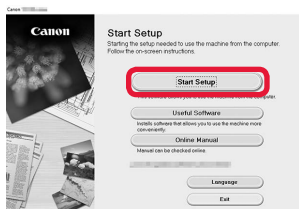
1. Щракнете върху **Компютър (Computer)** от стартовото меню.
2. Щракнете двукратно върху иконата на компактдиска в дясната страна на отворения прозорец. Ако се покаже съдържанието на компактдиска, щракнете двукратно върху **Msetup4.exe**.

- 3 Ако се покаже диалоговият прозорец **Управление на потребителски акаунти (User Account Control)**, щракнете върху **Продължи (Continue)**.

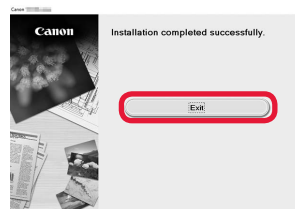
Преминете към стъпка 2, за да продължите.

- 2 Щракнете върху **Стартиране на настройка (Start Setup)**.

Ако се покаже следният екран, щракнете върху **Изход (Exit)**.



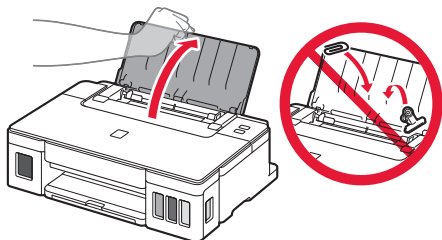
Следвайте инструкциите на екрана, за да продължите с настройката.



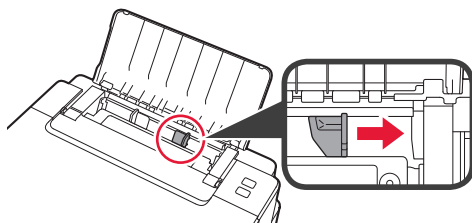
Настройката е завършена, когато лампата **Включване (ON)** на принтера спре да мига и остане да свети непрекъснато. Вече можете да печатате от компютъра.



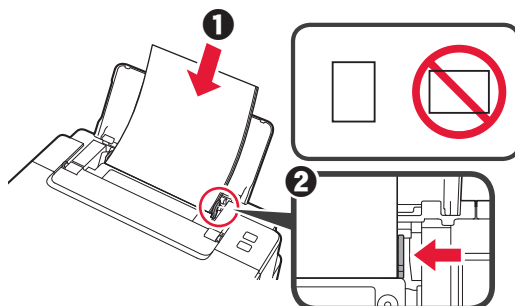
- 1 Отворете подложката за хартия.



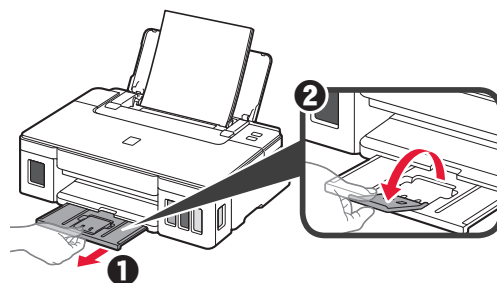
- 2 Плъзнете докрай десния водач за хартия.



- 3
- 1 Заредете хартия със страната за печат нагоре.
  - 2 Плъзнете десния водач за хартия, за да го подравните със страната на топчето хартия.



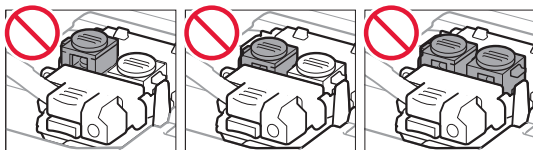
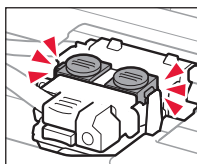
- 4
- 1 Издърпайте изходната тава за хартия.
  - 2 Отворете удължението на изходната тава.



## Транспортиране на принтера

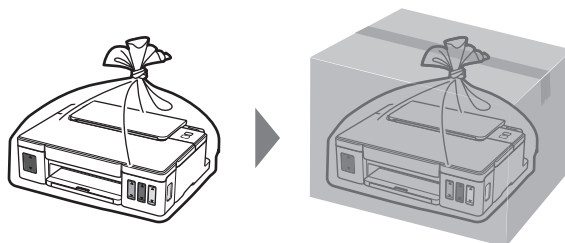
Когато премествате принтера, се уверете в описаното по-долу. За подробности вижте **Онлайн ръководство**.

Проверете дали и двата бутона за свързване са натиснати докрай надолу, за да избегнете течове на мастило.

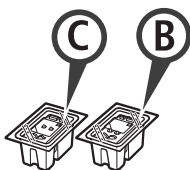


Опаковайте принтера в найлонов чувал, в случай че тече мастило.

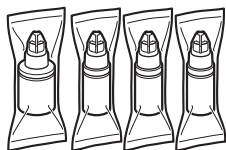
- Опаковайте принтера в твърда кутия, така че да е поставен с долната част надолу с помощта на предпазен материал, за да осигурите безопасното му транспортиране.
- Не наклоняйте принтера. Мазилото може да протече.
- Работете внимателно и се уверете, че кашонът винаги остава в хоризонтално положение и НЕ се обръща обратно или настрани, тъй като принтерът може да се повреди и от него да изтече мастило.
- Когато използвате спедиторска фирма за транспортиране на принтера, маркирайте кутията с надписа "ТАЗИ СТРАНА НАГОРЕ", за да се уверите, че принтерът ще бъде поставен с долната част надолу. Също така поставете и надпис "ЧУПЛИВО" или "ДА СЕ БОРАВИ ВНИМАТЕЛНО".



## 1. Preverjanje priložene vsebine



□ Kartuša



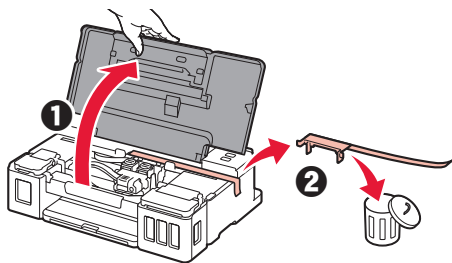
□ Steklenička s črnilom

- Napajalni kabel
- Namestitveni CD za računalnike z operacijskim sistemom Windows
- Informacije o varnosti in pomembne informacije
- Navodila za postavitve in začetek uporabe (ta priročnik)

## 2. Odstranjevanje zaščitnih materialov



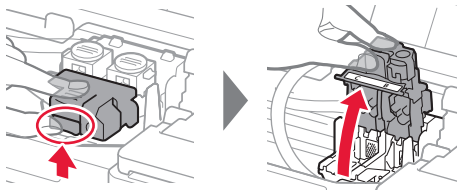
- 1 Odstranite zaščitne materiale (kot je oranžni trak) z zunanosti tiskalnika.
- 2 **1** Odprite zgornji pokrov.  
**2** Odstranite oranžni trak in zaščitni material ter ju zavrzite.



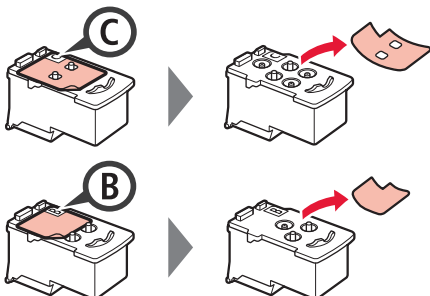
## 3. Namestitev kartuše



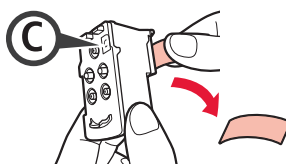
- 1 Odprite pokrov za pritrditev kartuš.



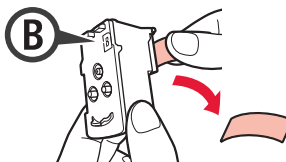
- 2 Vzemite posamezne kartuše iz paketa in odstranite oznako.



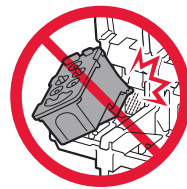
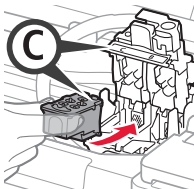
- 3 Odstranite zaščitni trak.



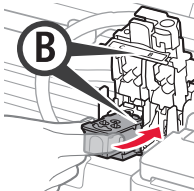
Tega dela se ne dotikajte.



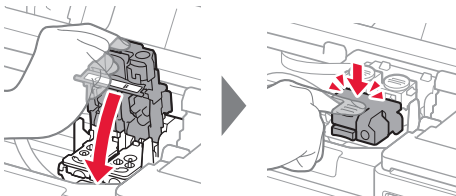
- 4 Kartušo C (barvna) vstavite na levi in kartušo B (črna) na desni.



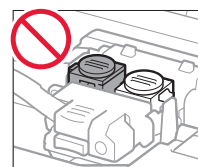
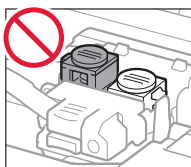
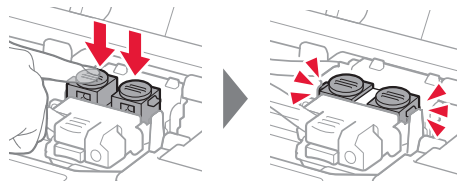
Pazite, da s kartušo ne udarite ob dele v bližini.



- 5 Zaprite pokrov za pritrditev kartuš in ga pritisnite navzdol.



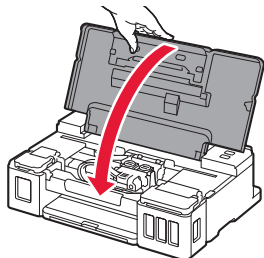
- 6 Pritisnite oba gumba za spajanje povsem navzdol.



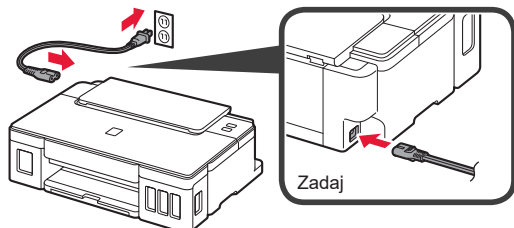
## 4. Vklon tiskalnika



- 1 Zaprite zgornji pokrov.

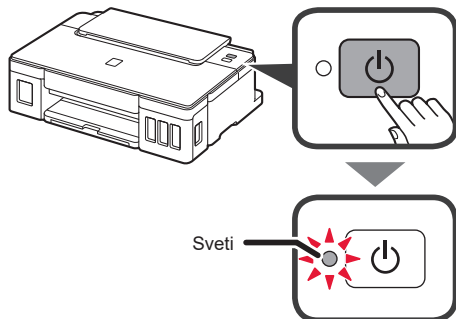


- 2 Priključite napajalni kabel.

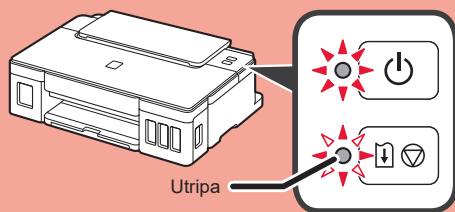


Ne priključite še nobenega kabla razen napajalnega kabla.

- 3 Pritisnite gumb **VKLOP (ON)**.



Če lučka **Alarm** utripa, poiščite navodila za odpravljanje napake v razdelku »Ko lučka utripa« na strani 3.

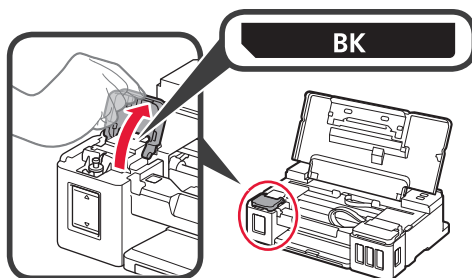


## 5. Vlivanje črnila

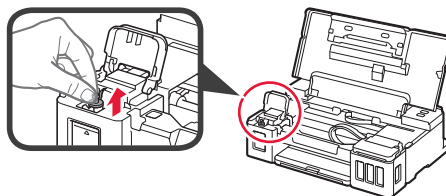


Pri tem izdelku je treba previdno ravnati s črnilom. Ko so črnilni vložki napolnjeni s črnilom, se črnilo lahko polije. Če s črnilom umažete oblačila ali druge predmete, ga morda ne bo mogoče odstraniti.

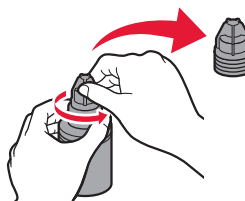
- 1 Odprite zgornji pokrov.
- 2 Odprite pokrov črnilnega vložka.



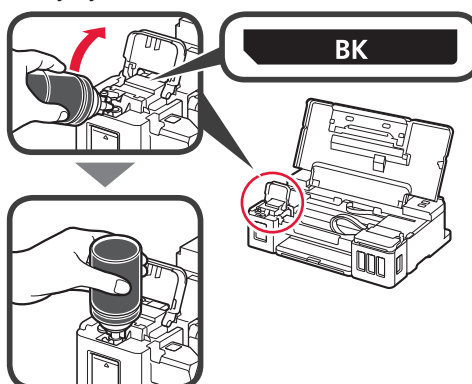
- 3 Primite in odstranite pokrovček črnilnega vložka.



- 4 Stekleničko s črnilom držite pokonci in odstranite pokrovček stekleničke.

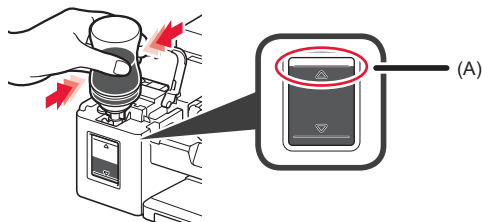


- 5 Šobo stekleničke s črnilom vstavite v odprtino za dovajanje in stekleničko s črnilom obrnite navzdol.

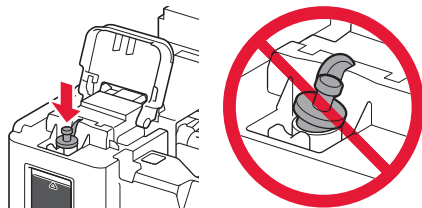




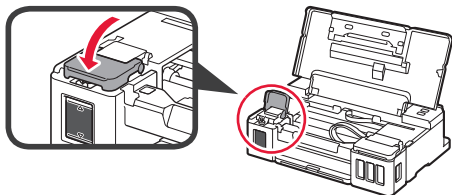
- 6 Vse črnilo vlijte v črnilni vložek. Prepričajte se, da je črnilo napolnjeno do oznake zgornje meje (A).



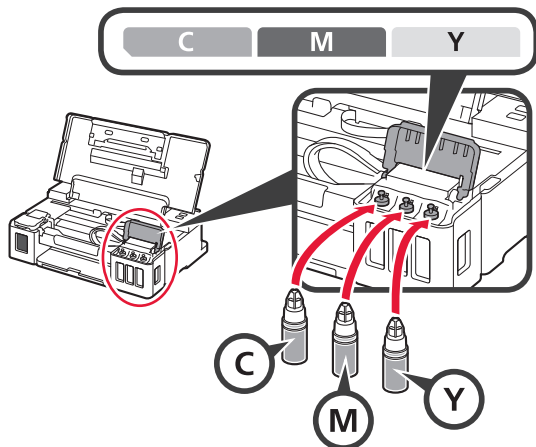
- 7 Trdno znova namestite pokrovčke vložka.



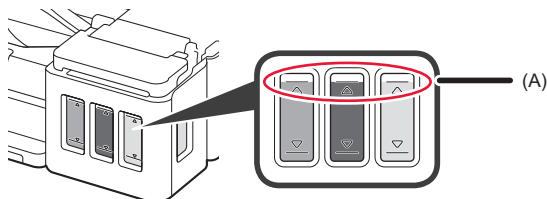
- 8 Zaprite pokrov črnilnega vložka.



- 9 Ponovite korake od 2 do 8, da vse črnilo vlijete v ustrezne črnilne vložke na desni strani glede na nalepko.



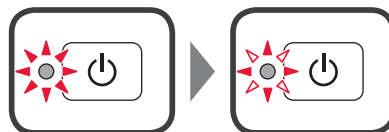
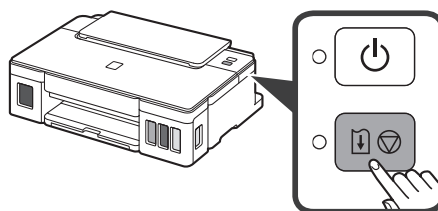
Prepričajte se, da je črnilo napolnjeno do oznake zgornje meje (A).



- 10 Zaprite zgornji pokrov.

## 6. Priprava črnilnega sistema

- 1 Pritisnite gumb **NADALJEVANJE/PREKLIC (RESUME/CANCEL)** in se nato prepričajte, da lučka **VKLOP (ON)** ne sveti več, temveč utripa.



Priprava črnila traja približno 5–6 min. Nadaljujte na naslednji strani.

### ? Ko lučka utripa

#### Lučka Alarm utripa



Preštete število utripov, da ugotovite vzrok težave.

- 4-krat  
Kartuše niso pravilno nameščene.  
➔ »3. Namestitev kartuše« na strani 1
- 5-krat  
Nobena kartuša ni nameščena.  
➔ »3. Namestitev kartuše« na strani 1
- 9-krat  
Zaščitni material ni odstranjen.  
➔ »2. Odstranjevanje zaščitnih materialov« na strani 1

#### Lučka VKLOP (ON) utripa



Priprava sistema za črnilo. To lahko traja približno 5–6 minut. Nadaljujte na naslednji strani.

#### Lučki VKLOP (ON) in Alarm 8-krat izmenično utripneta

Črnilo ni pripravljeno kot običajno.

Pritisnite gumb **VKLOP (ON)**, da znova zaženete tiskalnik, in nato ponovite postopek od »5. Vlivanje črnila« na strani 2.

V vseh drugih primerih glejte **Spletni priročnik**.



## 7. Povezovanje z računalnikom

Windows



Nastavitev povezave je potrebna za vsak računalnik. Nastavitev začnite na koraku 1 za vsak računalnik.

1 Zaženite namestitveno datoteko za način **A** ali **B**.

### A Prenajanje z interneta

- 1 V računalniku odprite spletni brskalnik (e ipd.).
- 2 Vnesite naslednji URL, da odprete spletno mesto družbe Canon.

<http://ij.start.canon>



3 Izberite **Nastavitev**.



4 Vnesite ime modela tiskalnika in kliknite **V redu**.



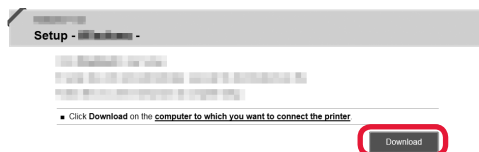
Ime modela lahko izberete s seznama.

5 Kliknite **Nastavitev**.



Postopki za Windows so prikazani spodaj. Če uporabljate računalnik z operacijskim sistemom, ki ni Windows, namestitev izvedite v skladu z navodili na zaslonu.

6 Za prenos namestitvene datoteke kliknite **Prenesi**.



7 Zaženite preneseno datoteko.

Nadaljujte s korakom 2 na naslednji strani.

### B Uporaba namestitvenega CD-ja (samo za Windows)

■ Če uporabljate operacijski sistem Windows 10 ali Windows 8.1:

1 Vstavite namestitveni CD v računalnik.



2 Ko se na desni strani zaslona računalnika prikaže naslednje sporočilo, ga kliknite.

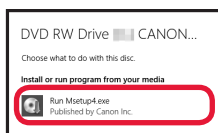


Če se to sporočilo ne prikaže (ali se je izbrisalo)  
1. V orodni vrstici kliknite **Raziskovalec (File Explorer)**.



2. Na levi strani odprtega okna kliknite **Ta računalnik (This PC)**.
3. Dvokliknite ikono CD-ja na desni strani okna. Če se prikaže vsebina CD-ja, dvokliknite **Msetup4.exe**.
4. Nadaljujte s korakom 4.

3 Če se prikaže naslednji zaslon, kliknite **Zaženi Msetup4.exe (Run Msetup4.exe)**.



4 Če se prikaže pogovorno okno **Nadzor uporabniškega računa (User Account Control)**, kliknite **Da (Yes)**.

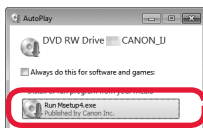
**Za nadaljevanje pojdite na korak 2.**

### ■ Če uporabljate operacijski sistem Windows 7:

1 Vstavite namestitveni CD v računalnik.



2 Ko se prikaže zaslon **Samodejno predvajanje (AutoPlay)**, kliknite **Zaženi Msetup4.exe (Run Msetup4.exe)**.



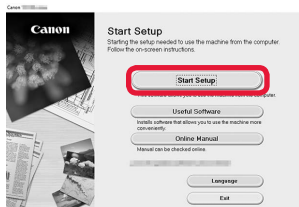
Če se zaslon **Samodejno predvajanje (AutoPlay)** ne prikaže

1. V začetnem meniju kliknite **Računalnik (Computer)**.
2. Dvokliknite ikono CD-ja na desni strani odprtega okna. Če se prikaže vsebina CD-ja, dvokliknite **Msetup4.exe**.

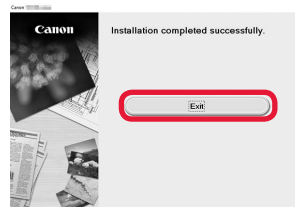
3 Če se prikaže pogovorno okno **Nadzor uporabniškega računa (User Account Control)**, kliknite **Nadaljuj (Continue)**.

**Za nadaljevanje pojdite na korak 2.**

2 Kliknite **Začni nastavitvev (Start Setup)**.



Če se prikaže naslednji zaslon, kliknite **Izhod (Exit)**.

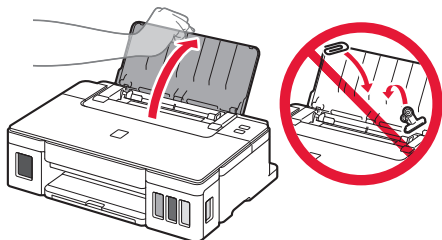


**Za nadaljevanje z nastavitvijo upoštevajte navodila na zaslonu.**

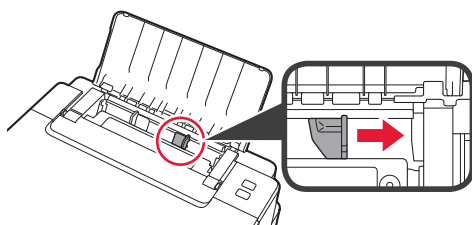
Ko lučka **VKLOP (ON)** na tiskalniku preneha utripati in sveti neprekinjeno, je nastavitvev končana. Tiskanje iz računalnika je omogočeno.



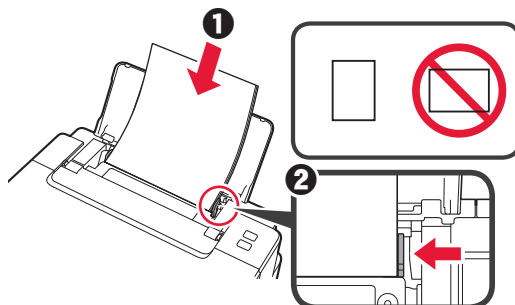
- 1 Odprite oporo za papir.



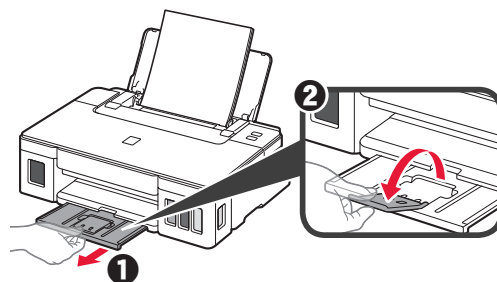
- 2 Potisnite desno vodilo za papir do konca.



- 3
- 1 Vstavite papir s stranjo za tiskanje obrnjeno navzgor.
  - 2 Pomaknite desno vodilo za papir, da ga poravnate s stranskim delom svežnja papirja.



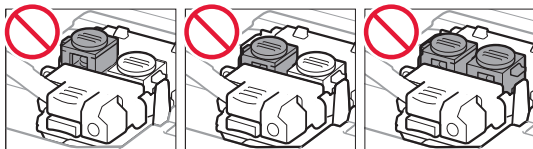
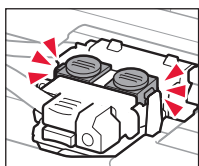
- 4
- 1 Izvlecite izhodni pladenj za papir.
  - 2 Odprite podaljšek izhodnega pladnja.



## Prevoz tiskalnika

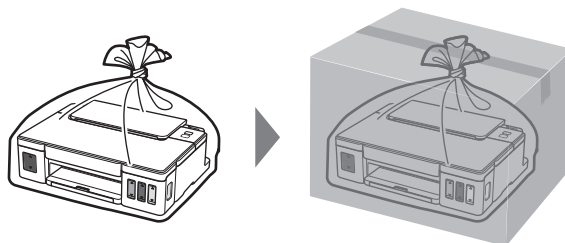
Ko premeščate tiskalnik, preverite spodnje trditve. Za podrobnosti glejte **Spletni priročnik**.

Prepričajte se, da sta oba gumba za spajanje pritisnjena povsem navzdol, da preprečite puščanje črnila.

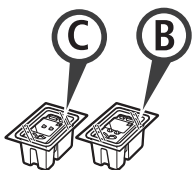


Tiskalnik vstavite v plastično vrečko za primer, da bi črnilo puščalo.

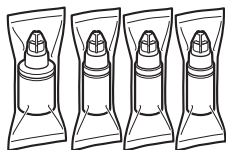
- Tiskalnik shranite v trdno škatlo tako, da je s spodnjim delom obrnjen navzdol. Uporabite dovolj zaščitnega materiala, da bo prenašanje varno.
- Tiskalnika ne nagibajte. Črnilo lahko izteče.
- Ravnajte previdno in škatlo položite na dno (NE na glavo ali na stranice), saj se lahko tiskalnik poškoduje ali začne iztekati črnilo v notranjosti tiskalnika.
- Preden pošljete tiskalnik, škatlo označite z opozorilom »S TO STRANJO NAVZGOR«, da bo tiskalnik obrnjen s spodnjim delom navzdol. Označite tudi z oznako »LOMLJIVO« ali »RAVNAJTE PREVIDNO«.



## 1. Provjera isporučениh stavki



□ Uložak



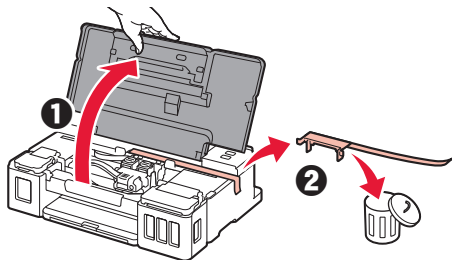
□ Bočica tinte

- Kabel za napajanje
- CD-ROM za postavu za Windows PC
- Sigurnosne i važne informacije
- Početak (ovaj priručnik)

## 2. Uklanjanje ambalaže



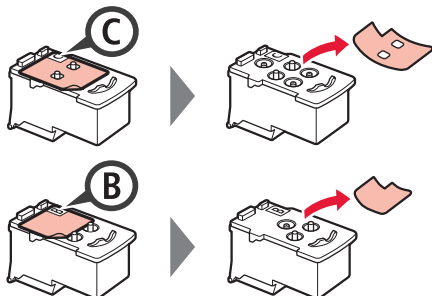
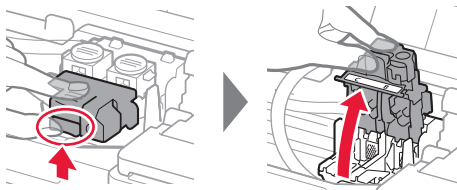
- 1 Uklonite materijale za pakiranje (poput narančaste trake) s vanjske strane pisača.
- 2 **1** Otvorite gornji poklopac.  
**2** Uklonite narančastu traku i zaštitni materijal te ih odložite.



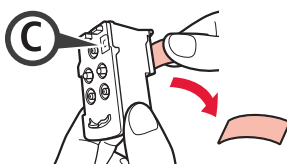
## 3. Instaliranje uložka



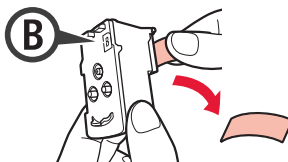
- 1 Otvorite poklopac za zaključavanje uložka.
- 2 Izvadite iz paketa svaki uložak i uklonite naljepnicu.



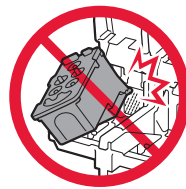
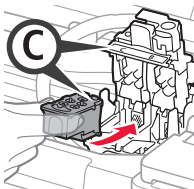
- 3 Uklonite zaštitnu traku.



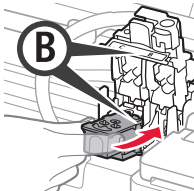
Ne dodirujte.



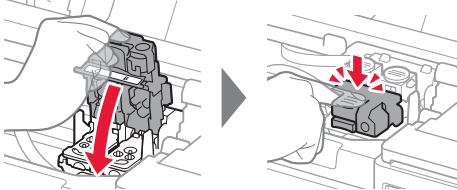
- 4 Umetnite C uložak (s bojom) na lijevu stranu i B uložak (s crnom bojom) na desnu stranu.



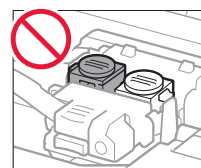
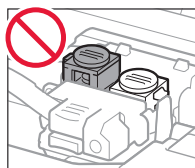
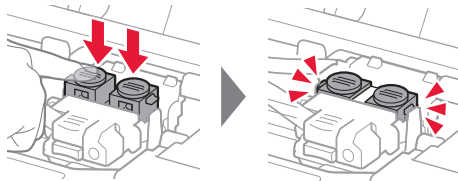
Nemojte je prisloniti uz okolne dijelove.



- 5 Zatvorite poklopac za zaključavanje uložka i gurnite ga prema dolje.



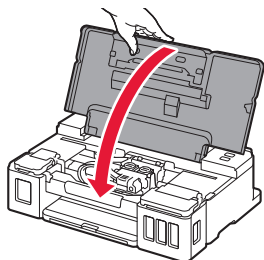
- 6 Pritisnite do kraja oba spojna gumba.



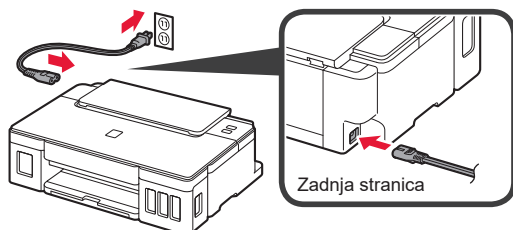
## 4. Uključivanje pisača



- 1 Zatvorite gornji poklopac.

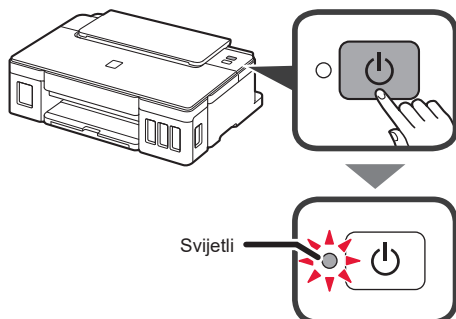


- 2 Povežite kabel za napajanje.

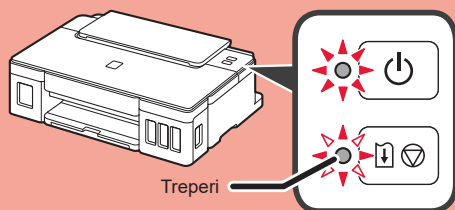


Još ne spajajte nijedan kabel, osim kabela za napajanje.

- 3 Pritisnite gumb **UKLJUČENO (ON)**.



Ako žaruljica **Alarm** treperi, pogledajte odjeljak pod naslovom „Ako žaruljica treperi“ na stranici br. 3 kako biste ispravili pogrešku.

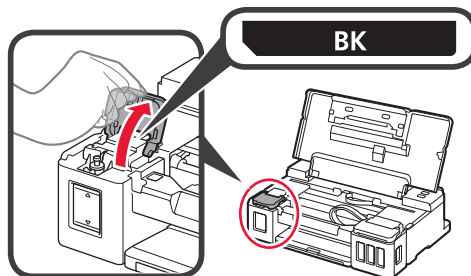


## 5. Ulijevanje tinte

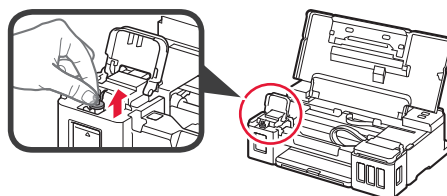


Kod ovog se proizvoda zahtjeva pažljivo rukovanje tintom. Tinta se može raspršiti pri punjenju spremnika tintom. Ako tinta dospije na vašu odjeću ili druge stvari, možda se neće moći odstraniti.

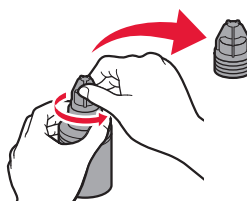
- 1 Otvorite gornji poklopac.
- 2 Otvorite poklopac spremnika tinte.



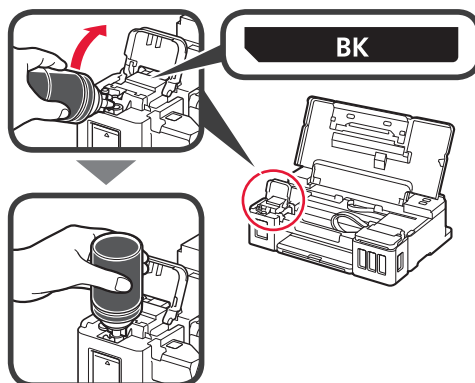
- 3 Uхватite i uklonite kapicu spremnika sa spremnika tinte.



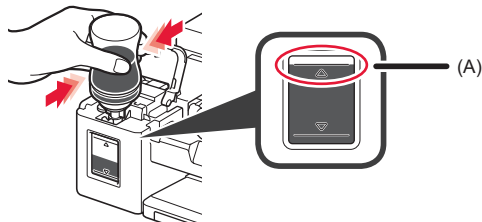
- 4 Držite bočicu tinte uspravno i uklonite kapicu bočice.



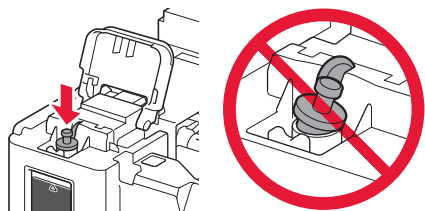
- 5 Umetnite mlaznicu bočice tinte u ulazni otvor i postavite bočicu tinte naopako.



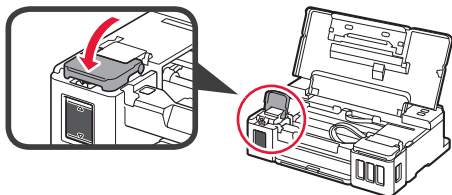
- 6 Ulijte svu tintu u spremnik tinte.  
Provjerite je li se tinta ulila do linije gornje granice (A).



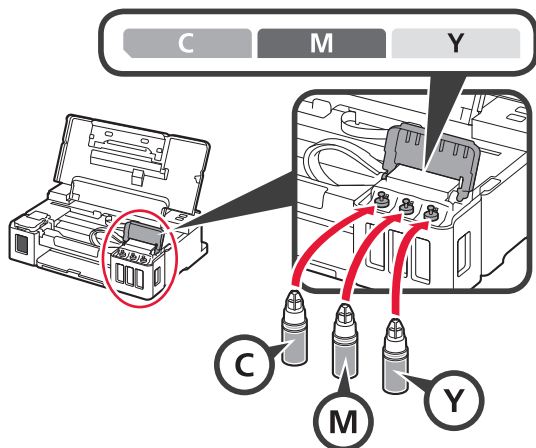
- 7 Čvrsto ponovno zavijte kapicu spremnika.



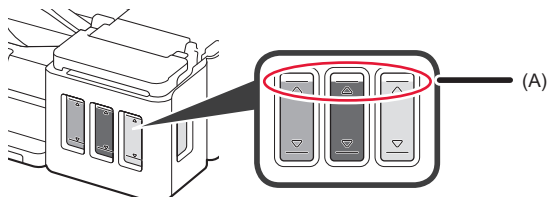
- 8 Zatvorite poklopac spremnika tinte.



- 9 Ponovite korake od 2 do 8 kako biste svu tintu ulili u odgovarajuće spremnike tinte na desnoj strani prema naljepnici.



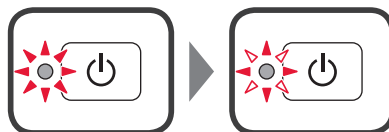
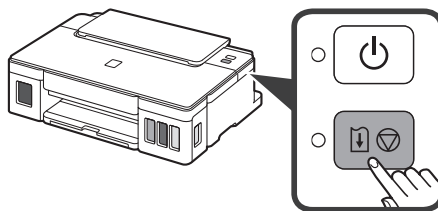
Provjerite je li se tinta ulila do linije gornje granice (A).



- 10 Zatvorite gornji poklopac.

## 6. Priprema sustava tinte

- 1 Pritisnite gumb **NASTAVI/ODUSTANI (RESUME/CANCEL)** i zatim provjerite je li žaruljica **UKLJUČENO (ON)** koja je svijetlila počela treperiti.



Priprema tinte traje između 5 i 6 minuta.  
Prijedite na sljedeću stranicu.

### ? Kada žaruljica treperi

#### Žaruljica Alarm treperi



Izbrojite broj treptaja kako biste utvrdili uzrok problema.

- 4 puta  
Uložak nije pravilno instaliran.  
→ „3. Instaliranje uložaka” na stranici br. 1
- 5 puta  
Nema instaliranih uložaka.  
→ „3. Instaliranje uložaka” na stranici br. 1
- 9 puta  
Zaštitni materijali nisu uklonjeni.  
→ „2. Uklanjanje ambalaže” na stranici br. 1

#### Žaruljica UKLJUČENO (ON) treperi



Priprema sustava tinte. To može trajati između 5 i 6 minuta. Prijedite na sljedeću stranicu.

#### Žaruljice UKLJUČENO (ON) i Alarm naizmjenično trepere 8 puta

Tinta nije normalno pripravljena.

Pritisnite gumb **UKLJUČENO (ON)** kako biste ponovno pokrenuli pisač i zatim ponovite postupak od odjeljka „5. Ulijevanje tinte” na stranici br. 2.

Za sve druge slučajeve pogledajte **Priručnik na mreži**.

## 7. Povezivanje s računalom

Windows



Za svako vam računalo treba postavljanje veze. Nastavite s postavljanjem od koraka br. 1 za svako računalo.

### 1 Pokrenite datoteku za postavljanje za način **A** ili način **B**.

#### **A** Preuzimanje s interneta

- 1 Otvorite preglednik (Chrome itd.) na svom računalu.
- 2 Unesite sljedeću URL adresu i pristupite stranici Canon.

<http://ij.start.canon>



- 3 Odaberite **Postavljanje**.



- 4 Unesite naziv modela svog pisaača i kliknite **U redu**.



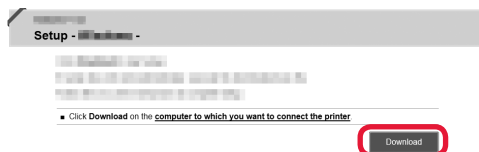
Naziv modela možete odabrati s popisa.

- 5 Kliknite **Postavljanje**.



Postupci za operativni sustav Windows prikazani su u nastavku. Ako na računalu koristite OS koji nije Windows, postavljanje izvršite prema uputama na zaslonu.

- 6 Kliknite **Preuzmi** i preuzmite datoteku za postavljanje.



- 7 Pokrenite preuzetu datoteku.

**Kako biste nastavili prijedite na korak 2 na sljedećoj stranici.**

#### **B** Upotreba CD-ROM-a za postavu (samo Windows)

##### ■ Kada koristite Windows 10 ili Windows 8.1:

- 1 Umetnite CD-ROM za postavu u svoje računalo.



- 2 Kada se sljedeća poruka pojavi s desne strane na zaslonu vašeg računala, kliknite na nju.



Kada se ova poruka ne pojavljuje (ili je nestala)

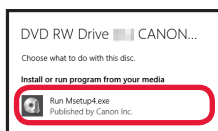
1. Kliknite **Eksplorer za datoteke (File Explorer)** na alatnoj traci.



2. Kliknite **Ovo računalo (This PC)** na lijevoj strani otvorenog prozora.
3. Dvaput kliknite ikonu CD-ROM-a na desnoj strani prozora. Kada se prikaže sadržaj CD-ROM-a, dvaput kliknite **Msetup4.exe**.
4. Prijedite na korak 4.



3 Ako se pojavi sljedeći zaslon, kliknite **Pokreni Msetup4.exe (Run Msetup4.exe)**.



4 Ako se pojavljuje dijaloški okvir **Kontrola korisničkog računa (User Account Control)**, kliknite **Da (Yes)**.

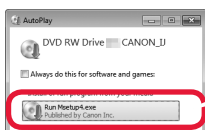
## Kako biste nastavili prijedite na korak 2.

### ■ Kada koristite Windows 7:


1 Umetnite CD-ROM za postavu u svoje računalo.



2 Kada se pojavljuje zaslon **Automatska reprodukcija (AutoPlay)**, kliknite **Pokreni Msetup4.exe (Run Msetup4.exe)**.



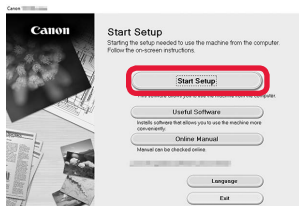
Kada se zaslon **Automatska reprodukcija (AutoPlay)** ne prikazuje

1. Kliknite **Računalo (Computer)** na početnom izborniku.
2. Dvaput kliknite ikonu  CD-ROM-a na desnoj strani otvorenog prozora. Kada se prikaže sadržaj CD-ROM-a, dvaput kliknite **Msetup4.exe**.

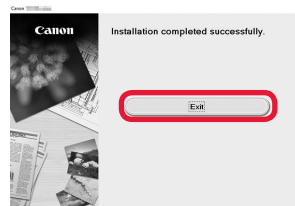
3 Ako se pojavljuje dijaloški okvir **Kontrola korisničkog računa (User Account Control)**, kliknite **Nastavi (Continue)**.

## Kako biste nastavili prijedite na korak 2.

2 Kliknite **Pokreni postavljanje (Start Setup)**.



Ako se prikaže sljedeći zaslon, kliknite **Izlaz (Exit)**.



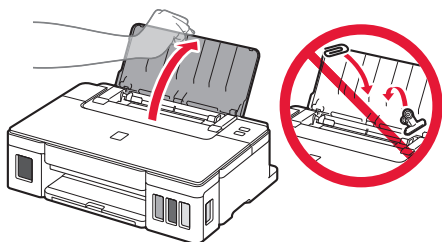
Slijedite upute na zaslonu da biste nastavili s postavljanjem.

Postavljanje je dovršeno kada žaruljica **UKLJUČENO (ON)** na pisaču prestane treperiti i počne postojano svijetliti. Možete ispisivati s računala.

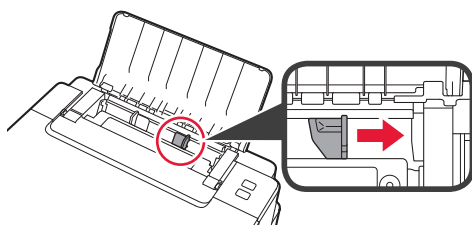
## Umetanje papira



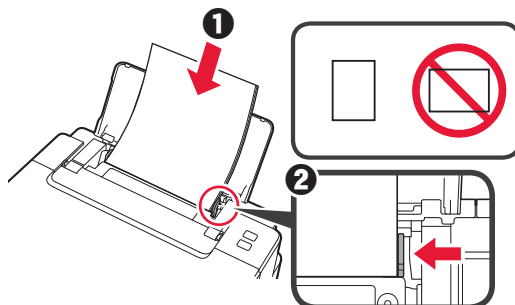
- 1 Otvorite oslonac papira.



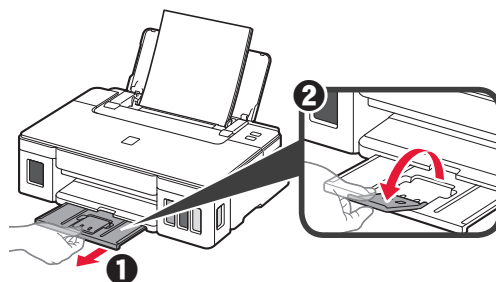
- 2 Povucite desnu vodilicu papira do kraja.



- 3
- 1 Umetnite papir tako da je ispisna strana okrenuta prema gore.
  - 2 Povlačite desnu vodilicu papira dok se ne poravna sa stranicom snopa papira.



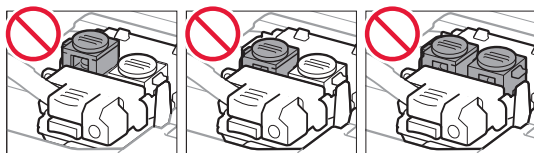
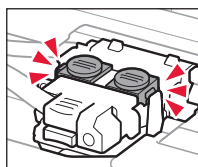
- 4
- 1 Izvucite ladicu za izlaz papira.
  - 2 Otvorite produžetak ladicice za izlaz papira.



## Prijenos pisača

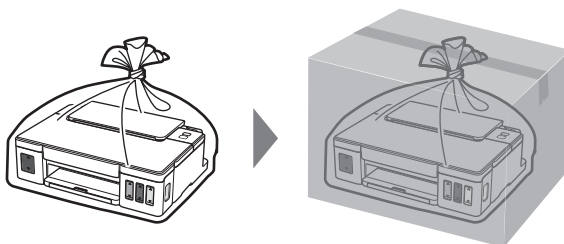
Kod premještanja pisača pazite na sljedeće. Za pojedinosti pogledajte **Priručnik na mreži**.

Provjerite jesu li oba spojna gumba do kraja pritisnuta kako biste izbjegli curenje tinte.



U slučaju curenja tinte spakirajte pišač u plastičnu vrećicu.

- Spakirajte pišač u čvrstu kutiju tako da donji dio bude okrenut prema dolje i upotrijebite dovoljno zaštitnog materijala da bi prijevod bio siguran.
- Ne naginjite pišač. Može doći do curenja.
- Pažljivo rukujte kutijom i pobrinite se da ostane na ravnom te je NE okrećite naopako ili na stranu jer se pišač može oštetiti, a tinta može iscuriti iz pisača.
- Ako kurir obavlja prijevoz pisača, označite „GORNJA STRANA” na kutiji da ne bi okretali pišač. Stavite i oznake „OSJETLJIVO” ili „PAŽLJIVO RUKOVATI”.







Αποκτήστε πρόσβαση στο Εγχειρίδιο Online  
Přičtĕtě si dokument Příručka online  
Přístup k dokumentu Příručka online  
Hogyan érhető el az Online kézikönyv?  
Accesati Manual online  
Odprite Spletni priročnik

Přečtĕtě si dokument Příručka online  
Pobierz Podręcznik online  
Çevrimiçi El Kitabı'na erişme  
Достъп до Онлайн ръководство  
Pristupite dokumentu Priručnik na mreži



Από πρόγραμμα περιήγησης  
Cez webový prehliadač  
Böngészőből  
Din browser  
Iz brskalnika

Pomocí webového prohlížeče  
Z przeglądarki  
Tarayıcıdan  
От браузер  
Iz preglednika

<http://ij.start.canon>



Από τη συντόμευση της επιφάνειας εργασίας  
Pomocí zástupce na ploše  
Cez odkaz na ploche  
Za pomocą skrótu klawiszowego  
Az Asztalon lévő parancsikonnal  
Masaüstü kisayolundan  
Din scurtătura de pe desktop  
От прекия път на работния плот  
Prek bližnjice na namizju  
Putem prečaca na radnoj površini



Από πρόγραμμα περιήγησης  
Cez webový prehliadač  
Böngészőből  
Din browser  
Iz brskalnika

Pomocí webového prohlížeče  
Z przeglądarki  
Tarayıcıdan  
От браузер  
Iz preglednika

<http://ij.start.canon>

