

# Plasma TV

## quick start guide

### 1. Accessories and Cables

#### Accessories

The following accessories are included with your TV:

- Remote Control (AA59-00600A) & Batteries (AAA x 2)
- Warranty Card / Safety Guide
- Owner's Guide
- Quick Start Guide
- Cleaning Cloth (BN63-01798B)
- Power Cord

#### Input Cables (Sold Separately)

You will need one or more of these cables to connect your TV to your antenna or cable outlet and your peripheral devices (Blu-ray players, DVD players, etc.)

- Audio
- HDMI
- HDMI-DVI
- Component
- Composite (AV)
- Coaxial (RF)

Make sure you have the correct cable before plugging it in. Illustrations of common plugs and jacks are below.

	Cable Plugs	Ports/Jacks
HDMI		
USB		
Optical		



Do not plug a cable in upside down.  
Make sure the orientation of the plug is correct before plugging it in.



BN68-04422A-00

- 1 -

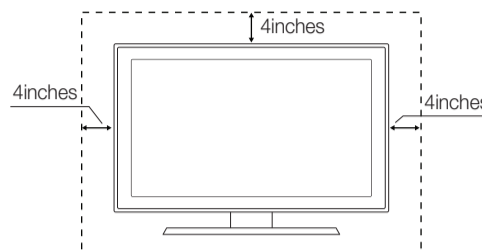
### 2. Getting Started

#### Provide Ventilation for Your TV

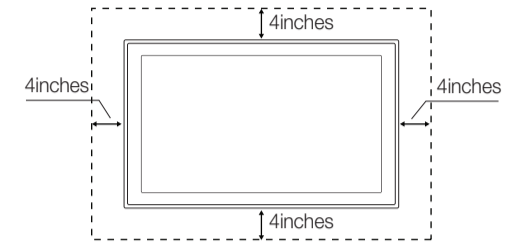
When you install your TV, maintain a distance of at least 4 inches between the TV and other objects (walls, cabinet sides, etc.) to ensure proper ventilation. Failing to maintain proper ventilation may result in a fire or a problem with the product caused by an increase in its internal temperature.

- When using a stand or wall-mount, use parts provided by Samsung Electronics only.
  - Using parts provided by another manufacturer may cause difficulties with the product or result in injury caused by the product falling.
- Be careful when you contact the TV because some parts can be somewhat hot.

#### Installation with a stand.

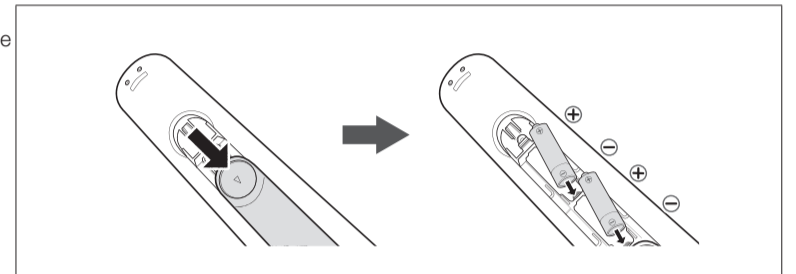


#### Installation with a wall-mount.



#### Installing Batteries into the Remote (Battery size: AAA)

Match the polarity of the batteries to the symbols in the batter compartment



#### NOTE

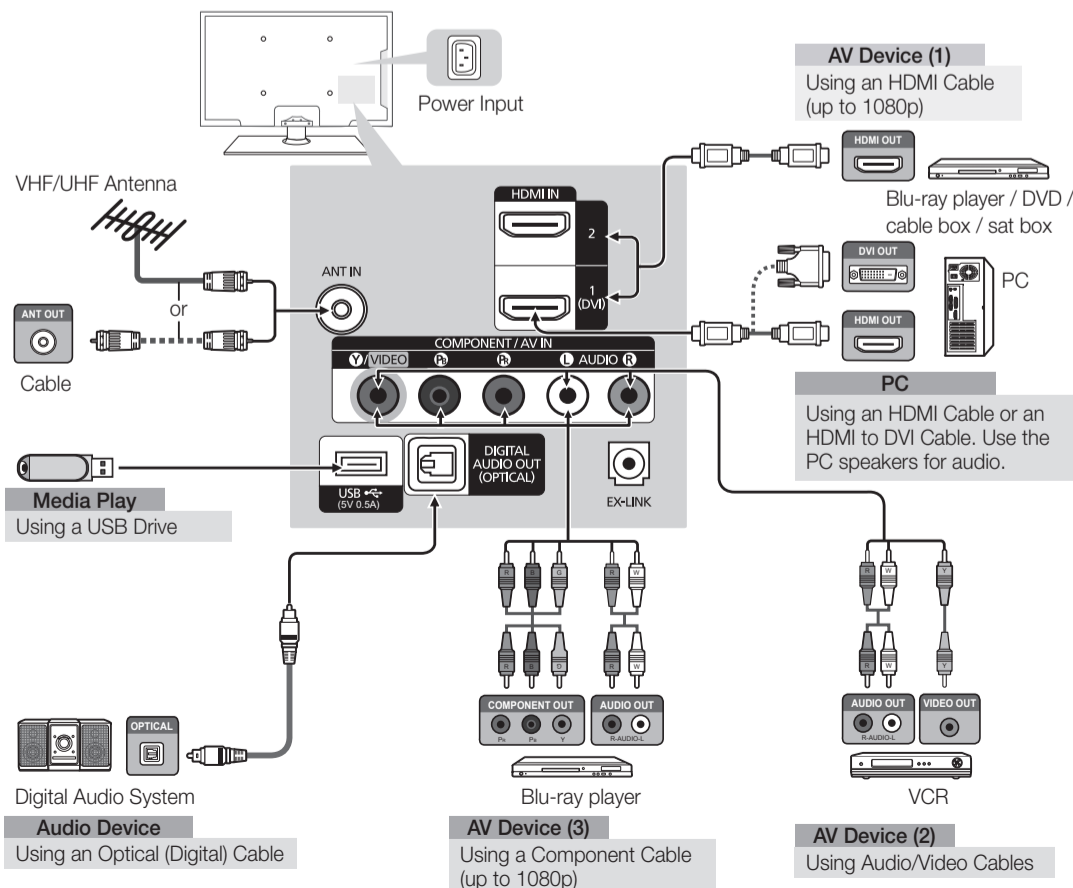
- Use the remote control within 23 feet of the TV.
- Bright light may affect the performance of the remote control. Avoid use when near fluorescent lights or neon signs.
- The color and shape of the remote may vary depending on the model.

- 2 -

### 3. Making Connections

Connect your TV to an antenna or cable connection, and then connect your peripherals. When done, connect the power cord to the TV, and then connect the power cord to an AC wall outlet. If you are connecting your TV to a cable or satellite box using HDMI, Component, or Composite connections, you do not need to connect the ANT IN jack to an antenna or a cable connection.

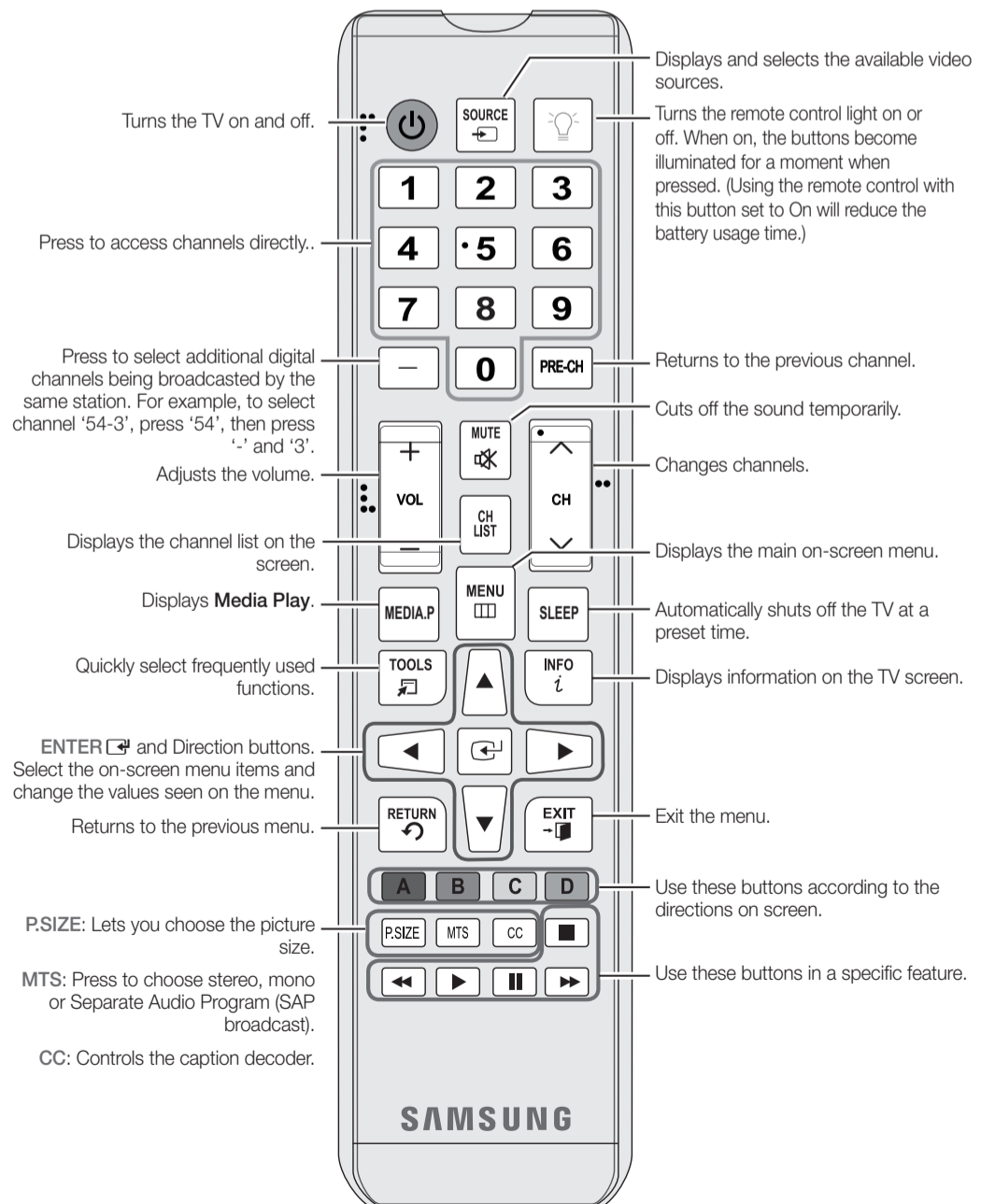
- For the best picture and audio quality, connect digital devices using an HDMI cable.
- If you connect an external device to the TV that uses an older version of HDMI, the video and audio may not work. If this occurs, ask the manufacturer of the device about the HDMI version and, if it is out of date, request an upgrade.
- Be sure to purchase a certified HDMI cable. Otherwise, the picture may not display or a connection error may occur.
- PC/DVI AUDIO IN input is not supported.
- For an HDMI to DVI cable connection, you must use the HDMI IN 1 (DVI) jack.
- For PCs with DVI video out jacks, use an HDMI to DVI cable to connect the DVI out on the PC to the HDMI IN 1 jack on the TV. Use the PC's speakers for audio.
- EX-LINK: Connector for service only.
- The PDP device may interfere with an amateur radio or AM radio.
- When using two-way radio mobile and portable units or amateur radio or AM radio near by your TV, this may cause the TV to malfunction.



- 3 -

### 4. The Remote Control

Learn where the function buttons are on your remote. Especially note POWER, SOURCE, VOL, CH, MENU, TOOLS, ENTER, CH LIST, RETURN and EXIT.



This remote control has Braille points on the Power, Channel, and Volume buttons and can be used by visually impaired persons.

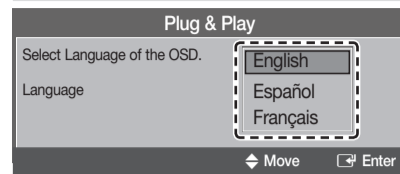
- 4 -

## 5. Configuring the Basic Settings with Plug & Play

When you turn the TV on for the first time, a sequence of prompts and screens will assist you in configuring basic settings. Before you begin, make sure you have connected the TV to an antenna or a cable connection and that the TV is plugged in. See "Connections" for instructions. To begin Plug and Play, press the POWER button on your remote.

Plug & Play is available only when the Input source is set to TV. See "Changing the Input Source".

### 1. Start Screen → Select a Language



After you press the Power button, the Start Screen appears. Press the ENTER button on your remote to continue.

On the Language screen, press the ENTER button. Use the ▲/▼ buttons to select a language, and then press ENTER again.



### 2. Select the Home Use Mode

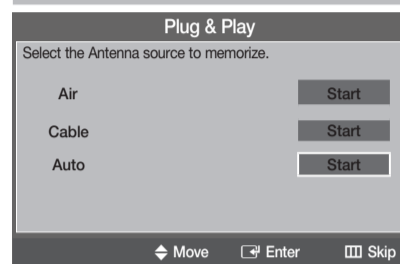


On the Home Use screen, press ENTER to select the Home Use mode.

Store Demo mode is for retail environments only.



### 3. Select the Antenna Source



On the Antenna Source screen, select the source of your TV signal.

#### Air

If your TV is connected to an antenna Choose **Air**, and then press ENTER. The TV will automatically start memorizing channels. When it is done, go to "Set the Clock Mode".

#### Cable

If your TV is connected to a cable outlet, choose **Cable**, and then press ENTER. Go to "Select the Cable Type".

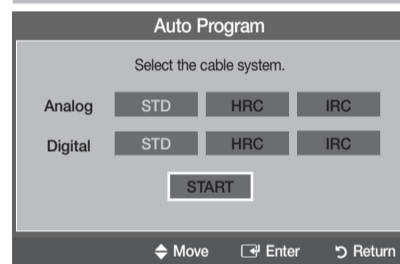
#### Auto

If you choose **Auto**, and then press ENTER, the TV will automatically select the correct Antenna source. Go to "Select the Cable Type"

If you have connected a cable or satellite box to an HDMI, Component, Composite, or Antenna input, and you will use the box to select channels, press the Menu button on your remote to skip this step.



### 4. Select the Cable Type



On the Cable Type screen, use the ▲/▶/▲/▼ buttons to select the type of digital and analog cable systems you have: **STD**, **HRC**, or **IRC**. Most systems are **STD** (Standard). When done, select **Start**, and then press ENTER. The TV will start memorizing channels.

Channel memorization can take up to 45 minutes, depending on your cable system.

Memorized channels are added to the Added Channel list. These are the channels you will see when you use the Channel buttons on your remote.



- 5 -

## 7. Accessing and Using the Main Menu

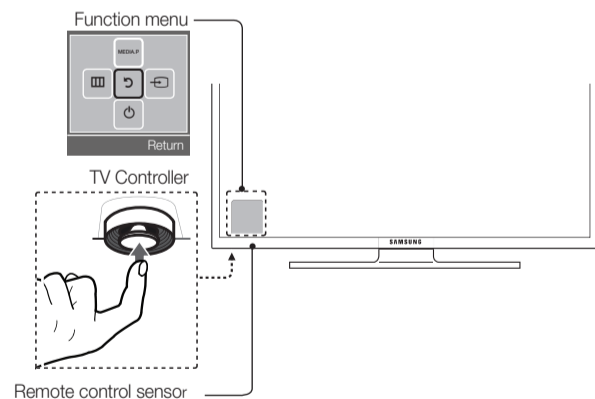
Your TV's Main menu contains functions that let you control many of the TV's features. For example, in the Main menu you can change the size and configuration of the picture, its brightness, its contrast and so on. There are also functions that let you control the TV's sound, channel configuration, energy use, and a host of other features. To access the main, on-screen menu, press the MENU button on your remote.

To use the Main menu, press the ▲/▼ buttons to move between the main option categories: Picture, Sound, Channel, etc. Each time you press a ▲/▼ button, the main category name on the left side of the menu changes.

To select a menu option in one of the categories, press the ▶ button or the ENTER button. Press it again or press ENTER to see the values or choices associated with that option. Usually, you would then press ENTER to select a value or choice. Press the RETURN button or the ◀ button to return to a previous screen or selection.

## 8. Using the TV's Controller (Panel Key)

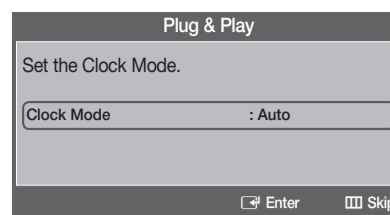
The TV's Controller, a small joy stick like button on the bottom left side of the TV, lets you control the TV without the remote control.



<b>Power on</b>	Turn the TV on by pressing the Controller when the TV is in standby mode.
<b>Adjusting the volume</b>	Adjust the volume by moving the Controller from side to side when the power is on.
<b>Selecting a channel</b>	Select a channel by moving the Controller backwards and forwards when the power is on.
<b>Using the Function menu</b>	To view and use the Function menu, press and release the Controller when the power is on. To close the Function menu, press and release the Controller again.
<b>Selecting Media Play</b>	With the Function menu visible, select <b>MEDIA.P</b> by moving the Controller backwards. The <b>Media Play</b> main screen appears. Select a media source by moving the Controller back and forth, and then pressing the Controller.
<b>Selecting the MENU (III)</b>	With the Function menu visible, select the <b>MENU (III)</b> by moving the Controller to the left. The OSD (On Screen Display) Menu appears. Select an option by moving the Controller to the right. Move the Controller to the right or left, or backwards and forwards to make additional selections. To change a parameter, select it, and then press the Controller.
<b>Selecting a Source (⊖)</b>	With the Function menu visible, open the <b>Source List (⊖)</b> by pushing the Controller to the right. The <b>Source List</b> screen appears. To select a source, move the Controller back and forth. When the source you want is highlighted, press the Controller.

- 7 -

## 5. Set the Clock Mode



Press ENTER and select **Auto** or **Manual**, and then press ENTER again.

#### If you selected Auto:

The TV will automatically download the correct time from a digital channel.

The DST (Daylight Savings Time) screen will appear. Press ENTER. Select **On** if you want to turn the DST adjustment on and off manually. Select **Off** to turn off the DST adjustment. Select **Auto** if you want the TV to adjust to DST automatically. Press ENTER when done.

The Time Zone screen will appear. Use the ▲/▼ button to select your Time Zone, and then press ENTER.

#### If you selected Manual:

The Clock Set screen appears. Use the ▲/▼ buttons to change the values in each field or use the number buttons to enter the values directly. Use the ◀/▶ buttons to move from field to field. When done with all the fields, press ENTER.



## 6. View the HD Connection Guide

See the best way to connect a cable or satellite box for the highest quality HD pictures. Press the ENTER button to close the guide.



## 7. Enjoy your TV.

Press the ENTER button.

To set or unset **Store Demo** mode outside of Plug & Play, press and release the Controller when the power is on. The Function menu screen appears. Push the Controller to the left (to **MENU (III)**) and hold for more than 5 seconds. The **Store Demo** mode is set. To cancel **Store Demo**, bring up the Function menu using the Controller, push the Controller to the right (to **Source (⊖)**) and hold for more than 5 seconds.

## 6. Changing the Input Source

### Source List

When you are watching TV and you want to watch a movie on your DVD player or Blu-ray player or switch to your cable box or STB satellite receiver, you need to change the Source.

- Press the SOURCE button on your remote.
- Use the ▲/▼ buttons to select an external input source.

#### TV / AV / Component / HDMI1/DVI / HDMI2

You can only choose external devices that are connected to the TV. In the **Source List**, connected inputs are highlighted.

### How to Use Edit Name

Edit Name lets you associate a device name to an input source. To access **Edit Name**, press the TOOLS button when the **Source List** is displayed. The following selections appear under **Edit Name**:

**VCR / DVD / Cable STB / Satellite STB / PVR STB / AV Receiver / Game / Camcorder / PC / DVI PC / DVI / TV / IPTV / Blu-ray / HD DVD / DMA:** Select the name of the device connected to specific input jacks to make your input source selection easier.

If you connect a PC to the HDMI IN 1 (DVI) port with an HDMI cable, assign **PC** to HDMI 1 in **Edit Name**.

If you connect a PC to the HDMI IN 1 (DVI) port with an HDMI to DVI cable, assign **DVI PC** to HDMI 1 in **Edit Name**.

If you connect an AV device to the HDMI IN 1 (DVI) port with an HDMI to DVI cable, assign **DVI** to HDMI 1 in **Edit Name**.

- 6 -

### Power Off (⏻)

With the Function menu visible, select **Power Off (⏻)** by pulling the Controller forwards, and then press the Controller.

To close the Menu, Media Play List, or Source List, press the Controller for more than 1 second.

When selecting the function by moving the controller to the up/down/left/right directions, be sure not to press the controller. If you press it first, you cannot operate it to move the up/down/left/right directions.

## 9. Important Safety Information



**Caution:** Pulling, pushing, or climbing onto the TV may cause the TV to fall. In particular, ensure that your children do not hang over or destabilize the TV. Doing so may cause the TV to tip over, resulting in serious injuries or death. Follow all safety precautions provided on the included Safety Flyer.

## 10. Questions? Comments?

### Contact SAMSUNG WORLDWIDE

If you have any questions or comments about your Samsung TV, please contact the SAMSUNG customer care center.

Country	CANADA	U.S.A
<b>Address</b>	Samsung Electronics Canada Inc., Customer Service 55 Standish Court Mississauga Ontario L5R 4B2 Canada	Samsung Electronics America, Inc. 85 Challenger Road Ridgefield Park, NJ 07660-2112
<b>Customer Care Center ☎</b>	1-800-SAMSUNG (726-7864)	
<b>Web Site</b>	www.samsung.com	

- 8 -